



Mounting & Length Specifications

TABLE OF CONTENTS / TABLE DES MATIÈRES / INDICE

TABLE OF CONTENTS / TABLE DES MATIÈRES / INDICE	2
---	---

SHOCK ABSORBER LENGTH DIMENSIONING / LONGUEUR DES AMORTISSEURS / LONGITUD DE LOS AMORTIGUADORES	3
--	---

MOUNTING CODES / CODES DE MONTAGE / CÓDIGOS DE MONTAJE	4
--	---

MOUNTING & LENGTH / MONTURES ET LONGUEURS / MONTAJE Y LONGITUDES	5-32
Shocks / Amortisseurs / Amortiguadores	5-13
Load Adjusting Shocks / Charge Réglable / Ajuste de Carga	14
Air Shocks / Pneumatique ajustable / Amortiguadores neumáticos ajustables	15
Cartridges / Cartouches / Cartuchos	17
Struts / Jambes de Suspension / Struts	21-29
Max-Lift Supports / Support Max-Lift / Soporte Max-Lift	31-32

SHOCKS
AMORTISSEURS
AMORTIGUADORES

LOAD ADJUSTING SHOCKS
CHARGE RÉGLABLE
AJUSTE DE CARGA

AIR SHOCKS
PNEUMATIQUE AJUSTABLE
AMORTIGUADORES NEUMÁTICOS
AJUSTABLES

CARTRIDGES
CARTOUCHES
CARTUCHOS

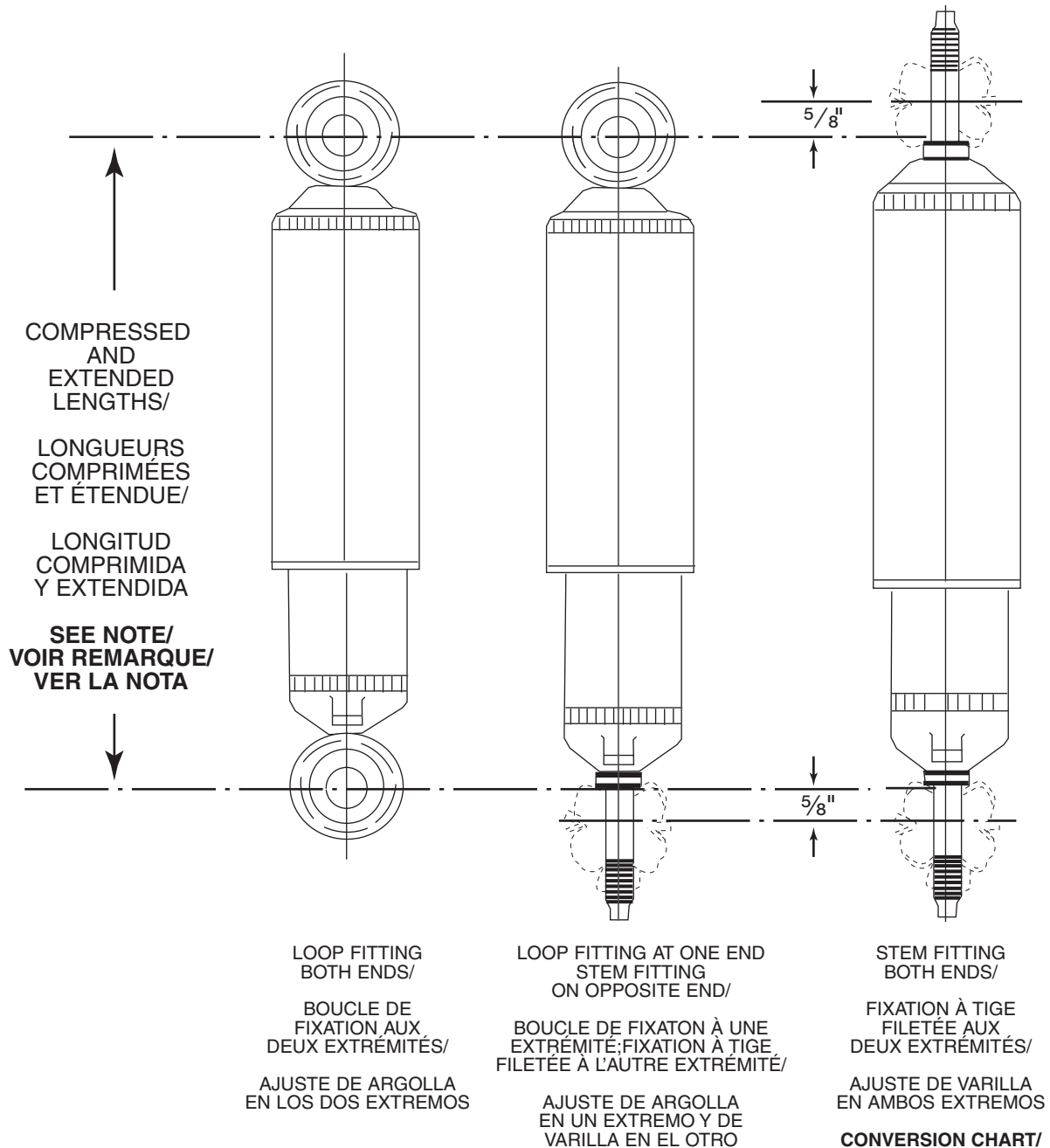
STRUTS
JAMBES DE SUSPENSION
STRUTS

MAX-LIFT SUPPORTS
SUPPORT MAX-LIFT
SOPORTE MAX-LIFT

SHOCK ABSORBER LENGTH DIMENSIONING

LONGUEUR DES AMORTISSEURS

LONGITUD DE LOS AMORTIGUADORES



Special Construction - Construction not the same as standard shock mounts listed.

NOTE: Compressed and extended lengths listed in the following pages of this book are taken from the center of loops and/or from the stem shoulders.

When measuring from the brackets on a vehicle, subtract 5/8" for each stem end.

See illustrations above.

Fabrication spéciale - La fabrication des fixations est différente de celle des amortisseurs standard.

REMARQUE: Les longueurs en compression et en extension indiquées dans les pages suivantes sont mesurées entre les épaulements des tiges filetées et/ou le centre des boucles. Lors de la mesure à partir des ferrures, soustraire 5/8" pour chaque tige filetée. Voir les illustrations.

Fabricación especial - La fabricación es diferente a la de las series de los amortiguadores listadas.

NOTA: Las longitudes comprimida y extendida listadas en las páginas siguientes de este libro, son tomadas desde el centro de las argollas y/o desde los resaltes de la varilla.

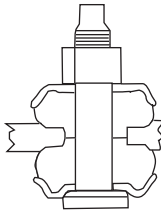
Cuando se mide desde los ajustes, en un vehículo quite 5/8" por cada extremo de varilla. Ver ilustración arriba.

CONVERSION CHART/ TABLEAU DE CONVERSION/ TABLA DE CONVERSIÓN

Fraction/ Fractionnaire Fracción (Inches/pouces/pulgadas)	Decimal/ Decimale Decimal
1/8	.12
1/4	.25
3/8	.37
1/2	.50
5/8	.62
3/4	.75
7/8	.87
1	1.00

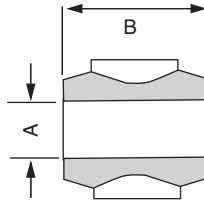
MOUNTING CODES

STEM



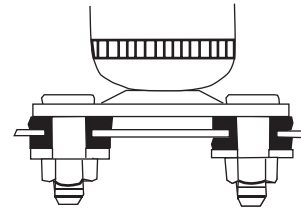
CODE	THREAD
S1	M10
S2	M12
S3	3/8 - 24
S4	3/8 - 16
S5	1/2 - 13
S6	5/8 - 11

LOOP MOUNTING



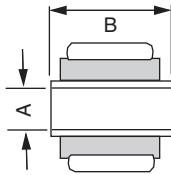
CODE	A	B
L1	5/8	1 5/16
L2	1 1/16	1 9/16
L3	3/4	1 9/16
L4	1	1 3/4
L5	1 1/4	2 9/16

STUD PLATE



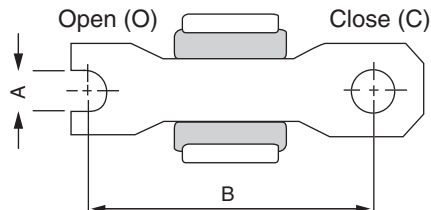
CODE SP

BUSHING & SLEEVE



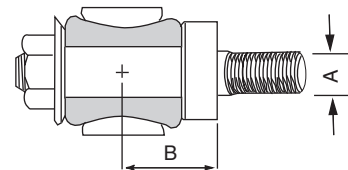
CODE	A	B	CODE	A	B	CODE	A	B	CODE	A	B
LS1	10MM	1 5/16	LS26	12MM	1 1/2	LS51	5/8/16MM	1 9/16	LS76	1/2	2 3/8
LS2	10MM	1	LS27	12MM	1 9/16	LS52	5/8/16MM	1 11/16	LS77	1/2	2 7/16
LS3	10MM	1 1/4	LS28	12MM	1 5/8	LS53	5/8/16MM	2	LS78	9/16	1 1/2
LS4	10MM	1 3/8	LS29	12MM	1 3/4	LS54	3/4	1 3/4	LS79	5/8/16MM	1 3/8
LS5	10MM	1 7/16	LS30	12MM	1 7/8	LS55	18MM	1 5/8	LS80	5/8/16MM	1 3/4
LS6	10MM	1 9/16	LS31	12MM	2	LS56	20MM	1 9/16	LS81	5/8/16MM	1 7/8
LS7	10MM	1 5/8	LS32	12MM	2 1/8	LS57	20MM	2	LS82	5/8/16MM	1 1/2
LS8	10MM	2	LS33	12MM	2 5/16	LS58	20MM	2 7/16	LS83	18MM	2
LS9	10MM	2 1/8	LS34	12MM	2 7/8	LS59	3/4	3 13/16	LS84	12MM	2 3/8
LS10	10MM	2 3/8	LS35	1/2	1 1/4	LS60	3/4	3 3/16	LS85	5/8/16MM	1 3/16
LS11	10MM	3	LS36	1/2	1 5/16	LS61	5/8/16MM	4	LS86	3/4	2 5/16
LS12	7/16	1 1/4	LS37	1/2	1 3/8	LS62	5/8/16MM	2 9/16	LS87	5/8/16MM	3 9/16
LS13	7/16	1 5/16	LS38	1/2	1 1/2	LS63	1/2	1/2	LS88	14MM	2 7/16
LS14	7/16	1 3/8	LS39	1/2	1 5/8	LS64	21MM	1 15/16	LS89	1	1 3/4
LS15	7/16	1 7/16	LS40	1/2	1 11/16	LS65	1	2	LS90	14MM	2 5/8
LS16	7/16	1 5/8	LS41	1/2	2 1/4	LS66	3/4	1 3/8	LS91	14MM	1 3/4
LS17	7/16	1 7/8	LS42	14MM	1 5/16	LS67	3/4	1 11/16	LS92	14MM	1 11/16
LS18	7/16	2 1/8	LS43	14MM	1 9/16	LS68	3/4	1 7/8	LS93	18MM	3 1/4
LS19	7/16	3 3/16	LS44	14MM	1 7/8	LS69	3/4	1 15/16	LS94	5/8/16MM	2 3/4
LS20	7/16	3 3/8	LS45	14MM	2 7/16	LS70	3/4	2 1/4	LS95	20MM	2 3/8
LS21	12MM	1	LS46	14MM	3 1/8	LS71	3/4	2 3/4	LS96	1/2	1 7/8
LS22	12MM	1 1/8	LS47	9/16	1 5/8	LS72	7/16	2	LS97	1/2	2 3/4
LS23	12MM	1 1/4	LS48	9/16	2 7/16	LS73	7/16	2 1/2	LS98	5/8/16MM	3
LS24	12MM	1 3/8	LS49	5/8/16MM	1 3/16	LS74	12MM	1 11/16	LS99	5/8/16MM	3 1/4
LS25	12MM	1 7/16	LS50	5/8/16MM	1 1/2	LS75	20MM	1 3/4			

CROSS PIN MOUNTING



CODE	END	A	B	CODE	END	A	B
XP1	O	5/16	2 3/16	XP8	O	5/16	3
XP2	O	5/16	2 3/8	XP9	O	5/16	3 5/8
XP3	O	5/16	2 7/16	XP10	O	3/8	2 5/8
XP4	C	5/16	2 7/16	XP11	C	3/8	2 3/4
XP5	C	5/16	2 1/2	XP12	O	3/8	3 3/16
XP6	O	5/16	2 3/4	XP13	C	12MM	2 15/16
XP7	C	5/16	2 7/8				

CANTILEVER PIN MOUNTING



CODE	A	B
CP1	1/2	1 1/16
CP2	1/2	1 3/16
CP3	1/2	1 5/16
CP4	1/2	1 1/2
CP5	5/8	1 5/16

MOUNTING & LENGTH CHARTS—SHOCKS

PART NO.	MOUNTING		LENGTHS		DUST		PARTS PACK	PART NO.	MOUNTING		LENGTHS		DUST		PARTS PACK
	Upper	Lower	Comp.	Ext.	Trav.	SHIELD			Upper	Lower	Comp.	Ext.	Trav.	SHIELD	
SENSA-TRAC® PASSENGER CAR SHOCK ABSORBERS								SENSA-TRAC® PASSENGER CAR SHOCK ABSORBERS — Continued							
5751	S4	S4	8.500	13.750	5.250	No	Two P1134	5854	S4	L1	12.125	20.000†	7.875	Yes	P1134
5752	L1	L1	8.625	12.750	4.125	Yes	None	5861	S4	LS26	14.750	23.750	9.000	Yes	P1136
5753	S4	L1	10.375	16.750	6.375	Yes	P1134	5864	LS7	LS7	13.250	21.625†	8.375	Yes	None
5754	S4	XP1	9.625	15.125	5.500	No	P1134	5867	S4	L1/CP3	11.750	19.000	7.250	Yes	P576 P1134
5756	S4	SP	10.000	15.500†	5.500	No	P423 P1137	5868	LS38	LS30	11.500	17.500†	6.000	Yes	None
5757	L1/CP3	L1/CP3	14.000	23.625	9.625	Yes	P572 P576	5870	S4	L1	14.250	23.875	9.625	Yes	P1137
5758	S4	S4	9.375	14.625†	5.250	No	Two P1134	5877	LS33	LS23	10.375	15.875	5.500	Yes	None
5759	S4	XP12	9.375	14.875	5.500	No	P1137	5879	S4	XP6	11.125	16.750†	5.625	Yes	P1137
5760	L1	LS14	14.625	24.875	10.250	Yes	None	5881	S4	LS23	13.625	21.125†	7.500	Yes	P1137
5761	S4	L2	11.750	19.000	7.250	Yes	P1135	5882	S4	L1	13.625	21.125†	7.500	Yes	P1137
5762	L2	XP5	10.625	15.250†	4.625	No	None	5892	S4	XP7	10.500†	13.750†	3.250	Yes	P1134
5763	S3	LS37	9.875	14.750†	4.875	No	P2	5893	LS40	LS52	9.375	14.250	4.875	Yes	None
5764	LS23	L1	11.750	18.375†	6.625	Yes	None	5896	S4	LS4	13.125	22.125	9.000	Yes	P1134
5765	SPEC	XP6	10.125	15.500	5.375	No	P2	5897	S4	LS7	16.125†	21.250	5.125	Yes	P1134
5766	XP7	L1	12.875	21.125	8.250	Yes	None	5900	S4	LS4	13.875	23.750	9.875	Yes	P1137
5767	LS25	LS22	10.500	16.750	6.250	Yes	None	5906	S4	XP5	9.375	14.625	5.250	No	P1134
5768	S	SPEC	15.125	24.125	9.000	No	None	5910	LS39	LS30	11.250	16.750	5.500	Yes	None
5769	S4	LS9	8.375	11.875†	3.500	Yes	P1134	5914	XP13	LS29	12.750†	17.500	4.750	Yes	None
5770	S4	LS3	13.875†	20.625†	6.750	Yes	P1134	5921	XP7	LS4	8.750	12.375†	3.625	Yes	None
5771	XP7	S4	10.375	16.625	6.250	Yes	P1134	5927	S4	L1/CP3	12.625	21.375	8.750	Yes	P576 P1137
5772	S4	L2	12.625	20.750	8.125	Yes	P1135	5928	S4	LS83	14.375	24.000†	9.625	No	P1134
5773	S4	LS37	10.125†	13.000†	2.875	No	P1135	5930	LS32	LS32	11.875†	18.375	6.500	Yes	None
5774	S4	LS27	16.000†	21.000	5.000	Yes	P1137	5931	XP7	LS14	18.875	21.250	2.375	Yes	P436
5775	LS50	L2	13.375	19.750	6.375	Yes	None	5936	S4	XP5	12.125	20.250	8.125	Yes	P941 P1136
5776	S1	LS5	13.125	22.000	8.875	Yes	None	5938	S4	XP5	11.500†	15.000†	3.500	Yes	P1134
5777	XP6	LS28	13.875	22.375	8.500	Yes	None	5939	S4	LS52	9.625	14.875†	5.250	Yes	P1134
5778	S4	LS47	11.500	17.875	6.375	Yes	P1417	5945	S4	LS23	13.000	21.375	8.375	Yes	P1137
5779	LS29	LS47	10.500	16.125	5.625	Yes	None	5947	S1	LS74	14.375†	21.750†	7.375	Yes	P1180
5780	LS29	LS47	11.500	17.750	6.250	Yes	None	5948	LS7	LS7	14.000	22.750†	8.750	Yes	None
5783	S4	LS26	12.500	20.000	7.500	Yes	P1136 P1475	5950	S4	LS47	11.875	19.125†	7.250	Yes	P1136
5784	S4	LS38	17.375	26.000	8.625	No	17110530	5951	LS10	LS3	10.250	15.750	5.500	Yes	None
5786	S1	LS45	15.625	27.000	11.375	Yes	P01479	5952	L2	L2	12.125	19.125†	7.000	Yes	None
5787	S5	SPEC	15.000	21.500	6.500	No	None	5955	XP7	L1/CP3	13.125	21.250†	8.125	Yes	P576
5788	S5	SPEC	15.000	21.500	6.500	No	None	5956	LS33	LS33	10.500	15.875†	5.375	Yes	None
5794	S4	SPEC	14.380	24.200	6.070	Yes	None	5959	LS7	LS7	13.375	21.500†	8.125	Yes	None
5795	S1	SPEC	14.280	20.050	5.470	Yes	None	5960	S4	XP4	9.125	13.750†	4.625	Yes	P1136
5796	S4	LS25	15.720	24.680	5.290	Yes	P1134	5961	S4	L1/CP3	12.125	20.000†	7.875	Yes	P576 P1136
5797	S4	LS30	18.100	25.300	3.930	Yes	None	5962	LS7	LS7	13.375	21.500†	8.125	Yes	None
5799	SPEC	LS27	13.720	23.040	8.700	Yes	None	5965	S4	LS47	14.500†	19.125†	4.625	Yes	P1136
5801	S4	XP5	9.250	14.375	5.125	No	P1134	5966	XP7	L1/CP3	13.125	21.250†	8.125	Yes	P576 P941
5802	XP7	L1/CP3	12.750	20.875	8.125	Yes	P576	5967	S4	L1/CP3	12.125	19.625†	7.500	Yes	P576 P1136
5803	S4	L1/CP3	12.750	21.500	8.750	Yes	P576 P1134	5968	S4	LS26	14.500†	19.125†	4.625	Yes	P1136
5804	S4	XP4	8.625	13.375	4.750	No	P1134	5969	S4	XP4	9.125	13.750†	4.625	Yes	P1136
5809	S4	SP	9.000	13.625†	4.625	No	P423 P1136	5970	S4	SPEC	11.375	18.625†	7.250	Yes	P1180 P1181
5811	S4	LS15	8.000	12.250	4.250	No	P1134	5971	S4	SPEC	15.000†	21.000	6.000	Yes	P864 P1136
5815	S4	LS19	8.750	13.250	4.500	No	P1134	5974	S1	LS74	15.125	24.000†	8.875	Yes	17110294
5817	XP7	LS17	12.125	19.125†	7.000	Yes	None	5975	S1	LS43	10.500	17.000	6.500	Yes	17110308
5818	S4	L1/CP3	11.625	19.375	7.750	Yes	P576 P1134	5976	S1	L1	10.250	14.250†	4.000	Yes	17110012
5819	S4	S4	9.250	14.125†	4.875	Yes	Two P1134	5977	S1	LS31	11.625	17.750	6.125	Yes	P260
5820	XP7	L1/CP3	14.125	24.000	9.875	Yes	P576	5978	LS32	LS83	12.125	19.125†	7.000	Yes	None
5821	S4	XP4	8.000	11.750†	3.750	No	P1134	5979	LS32	LS83	12.125	19.125†	7.000	Yes	None
5823	S4	SP	8.625	12.625†	4.000	No	P423 P1137	5980	S1	LS27	14.000†	21.000†	7.000	Yes	17110409
5826	S4	S4	10.125	16.375	6.250	Yes	Two P1134	5981	S1	LS27	14.375	23.625†	9.250	No	17110294
5829	S4	S4	7.125	10.750	3.625	No	Two P1135	5982	S1	LS27	14.000†	21.500†	7.500	Yes	17110409
5831	XP7	S4	12.250	20.500	8.250	Yes	P1137	5983	S4	LS5	13.750	21.750†	8.000	Yes	P1136
5837	LS39	S4	11.375	18.625	7.250	Yes	P1134	5985	SPEC	LS25	16.750	25.000†	8.250	No	17110530
5839	S4	L1/CP3	11.125	18.125	7.000	Yes	P576 P1134	5986	LS74	LS25	12.875†	17.875†	5.000	Yes	None
5840	S4	XP4	8.750	13.250	4.500	No	P1134	5987	S1	LS26	16.000	26.250†	10.250	No	17110615
5843	LS48	LS47	10.000†	12.875†	2.875	Yes	None	5988	S1	LS27	14.375	24.125†	9.750	No	17110294
5845	S4	LS26	12.250	20.125	7.875	Yes	P1136	5989	LS33	LS28	11.750	18.125†	6.375	Yes	None
5847	S4	L1/CP3	12.375	20.500	8.125	Yes	P576 P1136	5990	S1	SPEC	14.625	21.125†	6.500	No	P1101
5850	LS14	L1	9.500	14.000	4.500	Yes	None								

† Bumper Stop Unit. Dimension shown at Bumper Contact.

‡ Hydraulic Lockout Unit. Dimension shown at Lockout Contact.

Product Specifications Subject to Change Without Notice.

SHOCKS

LOAD ADJUSTING SHOCKS

AIR SHOCKS

CARTRIDGES

STRUTS

LIFT SUPPORTS

MOUNTING & LENGTH CHARTS—SHOCKS

PART NO.	MOUNTING		LENGTHS		DUST		PARTS PACK	PART NO.	MOUNTING		LENGTHS		DUST		PARTS PACK
	Upper	Lower	Comp.	Ext.	Trav.	SHIELD			Upper	Lower	Comp.	Ext.	Trav.	SHIELD	
SENSA-TRAC® PASSENGER CAR SHOCK ABSORBERS — Continued								MONROE-MATIC PLUS® SHOCK ABSORBERS — Continued							
5991	S1	LS5	13.250	21.875†	8.625	Yes	17110404	32216	S4	SPEC	8.500	12.875†	4.375	No	P423 P840
5992	S1	LS48	15.375	24.500†	9.125	No	17110507	32217	S4	LS23	9.250	14.375	5.125	Yes	P1134
5993	S4	LS74	12.500	21.250†	8.750	Yes	P1136	32219	S4	LS38	15.500†	23.875†	8.375	Yes	P1135
5994	S4	LS74	12.500	20.250†	7.750	Yes	P1136	32220	L1	LS38	11.625	18.250	6.625	Yes	None
5995	S4	LS74	12.500	20.250†	7.750	Yes	P1136	32221	S4	LS27	9.125	13.750†	4.625	Yes	P1134
5996	S1	LS7	16.875	25.125	8.250	No	17110497	32222	L3	LS27	14.500	24.000†	9.500	Yes	P867
5997	LS6	LS43	13.375	20.250	6.875	Yes	None	32223	S4	LS30	14.250†	19.625†	5.375	Yes	P1134
5998	S1	LS27	14.625	23.500	8.875	No	17110294	32224	S4	XP5	9.500	14.000	4.500	Yes	P1134
5999	S1	LS31	13.750	21.000	7.250	Yes	None	32225	XP7	LS47	16.375	26.750†	10.375	Yes	None
MONROE-MATIC PLUS® SHOCK ABSORBERS								32226	S4	LS26	10.500	15.875†	5.375	Yes	P1135
31000	L1	L1	12.000	19.500	7.500	Yes	P411	32227	S4	LS26	9.625	14.750†	5.125	Yes	P1135
31029	S4	L1	9.625	15.375	5.750	Yes	P1134	32228	L1	LS26	12.875	21.375	8.500	Yes	P570
31069	S4	S4	10.750	17.250†	6.500	Yes	Two P1134	32230	LS28	LS26	11.875	18.125†	6.250	Yes	None
31089	LS23	LS23	10.375	16.250	5.875	Yes	P110	32231	L1	LS26	13.375	22.875	9.500	Yes	None
31094	L1	L1	12.000	19.000	7.000	Yes	None	32233	LS28	LS28	11.750	18.000†	6.250	Yes	None
31125	S4	S4	12.250	20.750	8.500	Yes	Two P1137	32235	S4	L1	9.250	14.000†	4.750	Yes	P1135
31131	L2	L2	14.125	23.375	9.250	Yes	None	32237	L1	LS26	13.875	22.875	9.000	Yes	P827
31162	L1	S4	11.875	19.375	7.500	Yes	P1137	32238	L1	LS26	15.375	26.375	11.000	Yes	P827
31163	S4	L1	14.250	23.875†	9.625	Yes	P1137	32239	L1	LS26	15.125	25.750	10.625	Yes	None
31176	S4	S4	7.125	10.625	3.500	No	Two P1135	32242	LS26	LS26	12.625	18.125	5.500	Yes	None
31538	S4	LS23	14.125†	16.750†	2.625	Yes	P124 P1137	32243	S4	LS26	9.250	14.000†	4.750	Yes	P1135
31542	LS23	LS30	10.375	16.250	5.875	Yes	None	32245	S4	LS82	8.750	13.500	4.750	Yes	P1134
32022	S4	LS12	9.875	15.750	5.875	Yes	P1134	32246	S4	LS23	10.250	16.375	6.125	Yes	P1134
32066	S4	XP5	9.250	14.500	5.250	No	P1134	32247	L3	L3	13.625	21.625†	8.000	Yes	P575
32067	S4	LS19	8.625	13.375	4.750	No	P1134	32248	S4	L3	12.875	20.875†	8.000	Yes	P81 P1134
32073	LS39	L2	13.625	22.500	8.875	Yes	None	32249	S4	LS23	9.375	14.625	5.250	Yes	P1134
32075	S4	LS38	10.625	15.875†	5.250	No	P1135	32250	S4	LS37	9.625	14.875	5.250	No	P1135
32080	S4	LS38	12.375	19.750	7.375	Yes	P1134	32251	XP8	LS39	15.500	25.875	10.375	Yes	None
32103	L1/CP3	S4	11.500	17.875†	6.375	Yes	P576 P1135	32252	S4	XP4	13.000	21.125†	8.125	Yes	P1136
32112	XP7	S4	12.250	20.375	8.125	Yes	P1137	32253	XP7	LS26	15.000	25.250	10.250	Yes	P941
32113	S4	LS23	8.875	13.750	4.875	Yes	P1134	32254	LS77	LS39	11.000	16.375†	5.375	Yes	None
32118	S4	LS20	8.375†	11.000†	2.625	No	P1135	32255	S4	XP5	9.750	15.125†	5.375	Yes	P1135
32126	S4	L1/CP3	11.750	19.375	7.625	Yes	P576 P1134	32258	S4	XP1	8.625	13.375	4.750	Yes	P1134
32127	S4	XP8	8.625	13.250	4.625	No	P1135	32259	S4	L1	9.375	14.250†	4.875	Yes	P1135
32128	LS39	L2	15.625	26.250	10.625	Yes	None	32260	S4	LS26	12.250	20.625	8.375	Yes	P1135
32132	S4	XP4	8.625	13.375	4.750	No	P1134	32261	S4	LS23	9.500	14.375	4.875	Yes	P1137
32134	S4	LS18	8.125	12.125	4.000	No	P1134	32262	S4	S4	10.875	18.000	7.125	Yes	Two P1137
32143	S4	LS14	11.625	19.250	7.625	Yes	P436 P1134	32263	LS77	LS39	11.375	16.500†	5.125	Yes	None
32150	S4	LS38	9.875	14.375†	4.500	Yes	P1135	32264	XP7	LS47	14.000	22.625†	8.625	Yes	P941
32151	LS39	S4	11.250	18.500	7.250	Yes	P1134	32265	XP7	LS47	14.875	24.000†	9.125	Yes	None
32153	S4	LS7	10.250	15.500†	5.250	Yes	P1137	32266	XP7	LS47	15.500	25.375†	9.875	Yes	None
32162	S4	LS26	14.125	23.625†	9.500	Yes	P1136	32267	S4	L1	9.875	14.625†	4.750	Yes	P1135
32164	L1	LS38	12.875	21.375	8.500	Yes	P826	32268	S4	LS26	13.125	21.750	8.625	Yes	P1135
32165	S4	XP12	12.500	21.000	8.500	Yes	P1134	32269	L1	LS25	13.375	21.500†	8.125	Yes	None
32186	XP7	LS47	14.500	24.000	9.500	Yes	None	32270	L1	L1	15.125	25.000	9.875	Yes	None
32191	S4	LS17	10.250	16.500	6.250	Yes	P1135	32271	S4	LS23	10.250	15.375	5.125	Yes	P1134
32193	S4	LS42	15.250†	21.125†	5.875	Yes	P1137	32272	LS78	L3	12.625	19.750†	7.125	Yes	P120
32194	LS39	LS39	11.500	16.500†	5.000	Yes	None	32273	S4	LS24	9.125	13.625	4.500	Yes	P1134
32196	S4	XP4	12.500	19.875†	7.375	Yes	P1136	32274	S4	LS82	11.750	18.125†	6.375	Yes	P1134
32197	XP12	L1	12.375	20.375	8.000	Yes	None	32275	LS27	LS26	10.500	15.750†	5.250	Yes	None
32198	S4	LS4	13.000	22.125	9.125	Yes	P1134	32277	S5	LS47	9.500	13.750†	4.250	Yes	P1167
32201	S4	LS33	15.875†	23.000	7.125	Yes	P1137	32278	LS47	LS47	15.500	24.625	9.125	Yes	None
32202	S4	LS26	12.125	19.750†	7.625	Yes	P1136	32279	S5	LS47	13.875	21.750†	7.875	Yes	P1167
32203	S4	LS2	13.875†	19.000†	5.125	Yes	P1137	32280	S4	LS26	10.125	15.000†	4.875	Yes	P1135
32205	XP7	LS14	12.875	21.375	8.500	Yes	P436	32281	L1	LS38	14.000	23.000	9.000	Yes	None
32206	S4	LS23	8.375	12.500	4.125	Yes	P1137	32282	L3	LS38	12.625	18.625†	6.000	Yes	P120
32207	L1	L1	11.250	17.875	6.625	Yes	P411	32283	L3	L3	13.125	21.000	7.875	Yes	P575
32211	L1	LS26	11.750	18.000†	6.250	Yes	None	32284	S4	LS38	13.875	22.750	8.875	Yes	P1136
32212	LS74	LS74	13.875	22.875	9.000	Yes	None	32285	S4	LS38	11.250	16.750†	5.500	Yes	P1135
32214	S4	XP2	8.625	13.000	4.375	No	P1135	32286	S4	S4	13.500	22.125†	8.625	Yes	Two P1137
32215	XP8	LS39	13.750	22.750	9.000	Yes	None	32287	S4	L3	13.250	21.500	8.250	Yes	P122 P1134
								32288	LS26	LS26	14.125	22.375†	8.250	Yes	None

† Bumper Stop Unit. Dimension shown at Bumper Contact.

‡ Hydraulic Lockout Unit. Dimension shown at Lockout Contact.

MOUNTING & LENGTH CHARTS—SHOCKS

PART NO.	MOUNTING		LENGTHS		DUST		PARTS PACK	PART NO.	MOUNTING		LENGTHS		DUST		PARTS PACK
	Upper	Lower	Comp.	Ext.	Trav.	SHIELD			Upper	Lower	Comp.	Ext.	Trav.	SHIELD	
MONROE-MATIC PLUS® SHOCK ABSORBERS — Continued								MONROE-MATIC PLUS® SHOCK ABSORBERS — Continued							
32290	LS28	LS28	11.250	17.125†	5.875	Yes	None	32366	S5	LS47	14.250	22.250‡	8.000	Yes	P1167
32292	S4	XP5	9.375	14.500	5.125	No	P1134	32367	LS39	LS40	15.125	24.625†	9.500	Yes	None
32293	L1	L1	12.000	19.000†	7.000	Yes	None	32368	S4	S4	14.250	23.250†	9.000	Yes	Two P1135
32294	L3	L3	12.875	20.375†	7.500	Yes	P575	32369	S4	L3	14.500	23.250†	8.750	Yes	P120 P1135
32295	L3	L3	12.500	19.625†	7.125	Yes	P575	32370	L1	L1	16.250	27.250	11.000	Yes	None
32296	S4	XP4	13.500	17.875†	4.375	Yes	P941 P1135	32371	S4	XP8	9.250	13.625	4.375	No	P1135
32297	S4	LS7	16.000†	20.750†	4.750	Yes	None	32372	L1	LS26	13.875	22.250†	8.375	No	None
32298	S4	SPEC	11.375	18.625†	7.250	Yes	P1180 P1181	32373	LS77	LS39	11.375	15.875‡	4.500	Yes	None
32299	S4	SPEC	15.000†	21.000	6.000	Yes	P864 P1136	32374	LS37	LS37	14.125	22.750	8.625	Yes	None
32300	S4	XP4	8.375	12.750	4.375	No	P1134	32375	LS39	L2	15.750	26.250	10.500	Yes	None
32301	LS37	LS37	11.875	18.250	6.375	Yes	P816	32376	S4	XP8	10.000	15.500	5.500	No	P1135
32302	S5	XP5	10.250	15.000†	4.750	Yes	P1167	32377	L1	L1	12.625	19.750	7.125	Yes	None
32303	S4	LS26	13.875	23.750	9.875	Yes	P1135	32378	S4	LS38	13.250	21.250†	8.000	Yes	P1135
32304	S4	LS39	9.875	14.250†	4.375	Yes	P1136	32379	LS37	LS39	11.750	18.250	6.500	Yes	P816
32305	S4	LS26	15.625	27.250	11.625	Yes	P1136	32380	LS47	LS47	15.625	26.125	10.500	Yes	None
32306	XP12	LS37	12.500	19.625†	7.125	Yes	None	32381	S4	L1	11.500	18.375	6.875	Yes	P1135
32308	L3	LS43	14.750	23.625†	8.875	Yes	P867	32382	S4	LS26	11.500	18.500	7.000	Yes	P864 P1135
32309	L3	LS43	13.375	21.250†	7.875	Yes	P867	32383	S4	XP5	9.375	14.500	5.125	Yes	P1134
32311	LS30	L1	9.875	14.750†	4.875	Yes	None	32384	LS47	LS47	14.250	23.000	8.750	Yes	None
32314	L1	LS82	12.000	19.625	7.625	Yes	None	32385	LS39	L2	14.875	24.375	9.500	Yes	None
32315	S4	LS22	13.000	21.500†	8.500	Yes	P1134	32386	L1	LS26	16.000	26.375	10.375	Yes	None
32316	S4	LS26	11.500	18.250†	6.750	Yes	P1134	32388	S4	LS23	8.750	13.375	4.625	Yes	P1134
32317	S4	XP4	9.125	13.750†	4.625	Yes	P1136	32389	L1	LS82	13.375	20.750†	7.375	Yes	None
32318	S4	XP5	8.500	13.000	4.500	No	P1135	32390	S5	XP12	9.875	14.250†	4.375	Yes	P1167
32319	LS28	LS28	14.500	22.750†	8.250	Yes	None	32391	LS47	LS47	16.000	26.500	10.500	Yes	None
32321	LS28	LS28	15.250	24.625†	9.375	Yes	None	32392	S5	LS47	10.750	15.875†	5.125	Yes	P1167
32322	LS26	LS26	13.750	21.750†	8.000	Yes	None	32393	XP7	LS26	15.250	25.125	9.875	Yes	None
32323	LS26	LS26	14.375	23.125†	8.750	Yes	None	32394	L1	LS26	13.875	21.875†	8.000	Yes	None
32324	S4	LS43	14.250	23.875	9.625	Yes	P1135	32395	XP7	LS26	16.875	28.250	11.375	Yes	None
32325	S4	LS43	16.125	27.375	11.250	Yes	P1136	32400	S5	XP12	11.000	16.375	5.375	Yes	P1167
32326	S4	XP5	10.375	14.375†	4.000	Yes	P1135	32401	LS47	LS47	16.500	27.500	11.000	Yes	None
32327	LS47	LS47	15.625	23.875†	8.250	Yes	None	32402	S5	LS47	14.500	22.750	8.250	Yes	P1167
32328	S4	SPEC	10.375	15.000†	4.625	Yes	P1135	32545	LS23	LS23	13.625	22.750	9.125	Yes	P110
32329	LS47	LS47	15.375	25.500†	10.125	Yes	None	32592	LS27	LS27	10.625	16.250†	5.625	Yes	P110
32330	S4	XP5	10.375	13.625†	3.250	Yes	P1135	33033	L1	LS26	10.125	14.625	4.500	Yes	P19
32332	LS26	LS26	14.125	20.125†	6.000	Yes	None	33049	S4	L1/CP3	12.625	21.250	8.625	Yes	P576 P1134
32333	LS26	LS26	12.500	20.125†	7.625	Yes	None	33050	XP7	L1/CP3	14.125	23.875	9.750	Yes	P576
32334	S4	L3	12.375	20.000†	7.625	Yes	P81 P1134	33053	S4	SP	9.125	13.625†	4.500	No	P423 P1136
32335	LS52	LS30	14.375	23.125†	8.750	Yes	None	33059	XP5	SP	9.500	14.250†	4.750	No	P423
32336	S4	LS23	9.625	15.000†	5.375	Yes	P1134	33074	LS37	LS37	11.875	18.250	6.375	Yes	P816
32337	S4	LS78	11.625	18.625†	7.000	Yes	P1134	33076	LS37	LS37	10.000	14.625	4.625	Yes	None
32338	S4	XP4	13.000	21.125†	8.125	Yes	P941 P1136	33082	XP7	L1	8.625	20.75	4.750	No	P1134
32339	LS29	LS25	13.375	21.750†	8.375	Yes	None	33084	L1/CP5	LS47	14.125	22.875	8.750	Yes	P19
32340	S5	XP5	10.250	15.000†	4.750	Yes	P1167	33086	LS40	LS40	12.875	21.000	8.125	Yes	None
32341	LS47	LS47	16.000	26.125†	10.125	Yes	None	33090	LS33	LS23	10.375	15.875	5.500	Yes	None
32344	LS47	LS47	14.375	23.000†	8.625	Yes	None	33095	LS7	LS7	13.375	21.500†	8.125	Yes	None
32345	LS47	LS47	15.000	24.000†	9.000	Yes	None	33097	S4	L1/CP3	12.250	20.375	8.125	Yes	P576 P1136
32346	S4	XP5	11.500	17.875†	6.375	Yes	P941 P1135	33100	LS48	LS47	10.250†	12.750†	2.500	Yes	None
32347	S4	SPEC	10.875	15.375†	4.500	Yes	P1135	33101	LS47	LS47	13.125†	16.250†	3.125	Yes	None
32348	LS47	LS47	14.750	23.500†	8.750	Yes	None	33102	XP7	LS4	8.750	12.375†	3.625	Yes	None
32350	S5	LS42	10.250	15.125†	4.875	Yes	P1167	33104	S4	XP7	10.500†	13.875†	3.375	Yes	P1134
32355	LS26	LS26	11.875	15.875	4.000	B	None	33108	S4	LS7	16.125†	21.250†	5.125	Yes	P1134
32356	S5	L1	10.125	15.000†	4.875	Yes	P1167	33115	LS40	LS52	9.500	14.375	4.875	Yes	None
32357	L1	LS26	16.625	28.250	11.625	Yes	None	33116	S4	LS23	13.000	21.375	8.375	Yes	P1137
32358	L1	LS26	14.250	22.875†	8.625	Yes	None	33121	LS14	L1	9.375	14.375	5.000	Yes	None
32359	L1	LS26	18.250	31.000	12.750	Yes	None	33122	S4	L1/CP3	11.625	18.750†	7.125	Yes	P576 P1134
32360	L1	LS26	12.750	20.375	7.625	Yes	None	33123	S4	XP5	9.250	14.625	5.375	No	P1134
32361	L1	LS36	10.625	16.000	5.375	Yes	P19	33124	S4	L1/CP3	12.625	21.375	8.750	Yes	P576 P1137
32362	S4	XP5	9.625	14.000†	4.375	No	P1134	33125	S4	LS83	14.375	24.000	9.625	No	P1134
32363	LS48	LS54	14.500	22.750†	8.250	Yes	None	33126	LS32	LS32	11.875	18.375†	6.500	Yes	None
32364	LS39	L2	16.875	28.375	11.500	Yes	None	33127	S4	XP4	9.125	13.750†	4.625	Yes	P1136
32365	LS47	LS47	16.000	26.125	10.125	Yes	None	33128	S4	L1/CP3	12.125	19.500†	7.375	Yes	P576 P1136

† Bumper Stop Unit. Dimension shown at Bumper Contact.

‡ Hydraulic Lockout Unit. Dimension shown at Lockout Contact.

Product Specifications Subject to Change Without Notice.

SHOCKS

LOAD ADJUSTING SHOCKS

AIR SHOCKS

CARTRIDGES

STRUTS

LIFT SUPPORTS

MOUNTING & LENGTH CHARTS—SHOCKS

PART NO.	MOUNTING		LENGTHS		DUST		PARTS PACK	PART NO.	MOUNTING		LENGTHS		DUST		PARTS PACK
	Upper	Lower	Comp.	Ext.	Trav.	SHIELD			Upper	Lower	Comp.	Ext.	Trav.	SHIELD	
MONROE-MATIC PLUS® SHOCK ABSORBERS — Continued								GAS MAGNUM® SHOCK ABSORBERS — Continued							
33129	S4	XP5	12.125	20.375	8.250	Yes	P941 P1136	34767	XP7	LS47	15.250	25.250†	10.000	Yes	None
33130	S4	LS27	14.500†	21.750†	7.250	Yes	P1180	34771	S3	L2	16.625	28.500	11.875	Yes	None
33131	LS7	LS7	14.000	22.750†	8.750	Yes	None	34776	S5	S4	9.500	13.750†	4.250	Yes	P1167
33132	S4	LS47	11.875	19.125†	7.250	Yes	P1136	34777	LS47	LS47	15.375	24.625	9.250	Yes	None
33133	LS10	LS3	10.250	15.750	5.500	Yes	None	34778	S5	S4	13.875	21.750†	7.875	Yes	P1167
33134	S4	LS47	14.500†	19.125†	4.625	Yes	P1136	34781	LS47	LS47	15.750	26.125	10.375	Yes	None
33135	XP7	L1CP3	13.125	21.250†	8.125	Yes	P567 P941	34782	S5	S4	14.375	22.750†	8.375	Yes	P1167
33136	S4	L1CP3	12.125	19.500†	7.375	Yes	P576 P1136	34783	S3	S4	15.125	24.625†	9.500	Yes	None
33137	S4	LS26	14.500†	19.125†	4.625	Yes	P1136	34787	S5	S5	14.250	23.250†	9.000	Yes	Two P1167
33272	S4	LS23	14.750†	20.875	6.125	Yes	P1137	34788	S4	L3	14.375	23.250†	8.875	Yes	P120 P1135
33273	LS38	LS30	12.250	17.375†	5.125	Yes	None	34791	L1	L1	16.125	27.250	11.125	Yes	None
GAS MAGNUM® SHOCK ABSORBERS								34792	S4	S4	11.500	18.875†	7.375	Yes	Two P1134
34501	S4	SPEC	10.875	15.250†	4.375	Yes	P1135	34793	S4	LS26	10.125	15.000†	4.875	Yes	P1135
34504	S5	LS37	10.375	15.125†	4.750	Yes	P1167	34794	S4	XP8	9.250	13.625	4.375	No	P1135
34514	S5	XP10	9.875	14.250†	4.375	Yes	P1167	34796	S4	L1	9.375	14.250†	4.875	Yes	P1135
34515	LS47	LS47	16.000	26.500	10.500	Yes	None	34797	L1	LS26	14.000	22.250†	8.250	Yes	None
34516	S5	LS47	10.750	15.875†	5.125	Yes	P1167	34798	LS77	S3	11.375	16.500†	5.125	Yes	None
34517	XP7	LS26	15.250	25.125	9.875	Yes	None	34799	LS77	S3	11.750	15.875†	4.125	Yes	None
34518	L1	LS26	13.750	21.875†	8.125	Yes	None	34802	L1	L1	14.000	22.750	8.750	Yes	P829
34519	XP7	LS26	16.750	28.250	11.500	Yes	None	34803	L1	L1	13.250	21.000	7.750	Yes	P573
34520	S5	SP12	11.000	16.375†	5.375	Yes	P1167	34817	L1/CP1	S3	9.875	14.625	4.750	Yes	P19
34521	LS47	LS47	16.500	27.500	11.000	Yes	None	34821	L1	LS38	14.250	22.875	8.625	Yes	None
34522	S5	LS47	14.500	22.750†	8.250	Yes	P1167	34822	S3	S3	13.875	22.750	8.875	Yes	None
34523	S5	LS47	13.625	20.750	7.125	Yes	P1167	34824	L1/CP1	S4	14.000	22.875	8.875	Yes	P19
34524	LS49	LS26	14.750	24.750	10.000	Yes	None	34826	L3	S3	12.625	18.500	5.875	No	P120
34655	S5	XP5	10.250	14.875†	4.625	Yes	P1167	34828	L3	L3	13.125	21.000	7.875	Yes	P575
34656	S4	LS26	14.375	24.250	9.875	Yes	P1135	34831	S4	XP8	8.875	13.375	4.500	No	P1135
34657	S4	S3	10.000	14.250†	4.250	Yes	P1135	34832	S3	L2	14.750	24.375	9.625	Yes	None
34658	S4	LS26	16.000	27.500	11.500	Yes	P1135	34839	S3	S3	9.750	14.750	5.000	Yes	None
34671	LS26	LS26	13.625	21.625†	8.000	Yes	None	34853	L2	L2	13.250	21.125	7.875	Yes	None
34672	LS26	LS26	14.250	23.000†	8.750	Yes	None	34854	S3	L2	15.625	26.250	10.625	Yes	None
34673	S4	LS43	14.250	23.875	9.625	Yes	P1135	34868	S4	XP8	10.000	15.500	5.500	No	P1135
34674	S4	LS43	16.125	27.375	11.250	Yes	P1135	34899	S4	S3	9.875	14.375	4.500	Yes	P1135
34675	S4	XP5	10.375	14.375	4.000	Yes	P1135	34900	S4	S3	10.625	15.875	5.250	No	P1135
34676	LS47	LS47	15.500	23.750†	8.250	Yes	None	34901	S4	S3	13.750	22.625	8.875	Yes	P1135
34677	S4	SPEC	11.000	15.125†	4.125	Yes	P1135	34904	L1	L1	11.875	18.125	6.250	Yes	P411
34678	LS47	LS47	16.750	25.500†	8.750	Yes	None	34905	L1	L1	12.625	19.750	7.125	Yes	None
34681	LS26	LS26	14.000	20.125†	6.125	Yes	None	34906	S4	S3	10.125	16.750†	6.625	Yes	P1135
34684	S5	L1	10.125	15.000†	4.875	Yes	P1167	34907	S4	S3	13.375	21.250†	7.875	Yes	P1135
34685	L1	LS26	16.500	28.250	11.750	Yes	None	34909	S4	S4	13.250	22.000†	8.750	Yes	Two P1134
34686	L1	LS26	14.250	22.875†	8.625	Yes	None	34910	LS39	LS39	13.000	20.875	7.875	Yes	None
34687	L1	LS26	18.000	31.000	13.000	Yes	None	34911	S4	LS38	12.375	19.750	7.375	Yes	P1136
34689	S5	XP5	10.250	15.000†	4.750	Yes	P1167	34912	L1/CP1	LS54	14.125	23.000	8.875	Yes	P19
34690	LS47	LS47	16.000	26.000†	10.000	Yes	None	34919	S3	S3	11.625	18.250	6.625	Yes	P816
34692	LS47	LS47	14.750	23.500†	8.750	Yes	None	34920	S4	S4	15.500	26.125	10.625	Yes	None
34693	LS47	LS47	14.375	23.000†	8.625	Yes	None	34926	S4	L1	11.500	18.375	6.875	Yes	P1135
34694	LS47	LS47	15.000	24.125†	9.125	Yes	None	34927	L1	LS26	13.500	21.750	8.250	Yes	None
34729	S4	LS26	10.000	14.625†	4.625	Yes	P1135	34928	S4	LS26	11.625	18.500	6.875	Yes	P864 P1135
34730	S4	LS26	10.500	15.875	5.375	Yes	P1135	34929	S4	S4	14.750	24.625	9.875	Yes	None
34731	L1	LS26	12.750	20.500	7.750	Yes	None	34930	L1	LS26	14.875	24.750	9.875	Yes	None
34732	LS26	LS26	14.000	22.500†	8.500	Yes	None	34944	LS37	LS37	11.750	18.375	6.625	Yes	P816
34733	LS26	L1	16.375	27.250	10.875	Yes	None	34953	S4	XP5	9.375	14.500	5.125	Yes	P1134
34736	L1/CP1	S3	10.375	16.000	5.625	Yes	P19	34954	S4	L1	11.500	19.125	7.625	Yes	P1137
34741	S4	XP5	9.625	14.000†	4.375	No	P1134	34958	L1	S3	12.625	20.375	7.750	Yes	P826
34750	S4	XP8	8.875	13.375	4.500	No	P1135	34959	S4	L3	13.250	21.500	8.250	Yes	P122 P1134
34755	S4	LS54	14.500	22.750†	8.250	Yes	None	34960	S4	S4	14.125	22.875	8.750	Yes	None
34756	XP5	S4	14.000	22.750†	8.750	Yes	None	34963	L1	LS26	14.125	22.875	8.750	Yes	None
34759	S4	LS26	12.500	19.875†	7.375	Yes	P1135	34964	L1	LS26	15.750	26.375	10.625	Yes	None
34760	S4	L1	9.875	14.625†	4.750	Yes	P1135	34970	S4	S4	10.375	14.500†	4.125	No	P694
34761	S4	LS26	13.125	21.750	8.625	Yes	P1135	34971	LS27	LS27	13.375	21.000†	7.625	Yes	None
34762	XP7	LS47	13.875	22.500†	8.625	Yes	None	34983	S4	XP5	9.500	13.750†	4.250	No	P1134
34763	XP7	LS47	14.625	23.875†	9.250	Yes	None	34985	XP7	S4	16.125	26.750	10.625	Yes	None

† Bumper Stop Unit. Dimension shown at Bumper Contact.

‡ Hydraulic Lockout Unit. Dimension shown at Lockout Contact.

MOUNTING & LENGTH CHARTS—SHOCKS

PART NO.	MOUNTING		LENGTHS		DUST		PARTS PACK	PART NO.	MOUNTING		LENGTHS		DUST		PARTS PACK
	Upper	Lower	Comp.	Ext.	Trav.	SHIELD			Upper	Lower	Comp.	Ext.	Trav.	SHIELD	
SENSA-TRAC® TRUCK SHOCK ABSORBERS								SENSA-TRAC® TRUCK SHOCK ABSORBERS — Continued							
37011	S4	LS26	9.875	14.500†	4.625	Yes	P1135	37082	L1	LS25	13.625	21.500†	7.875	Yes	None
37012	S4	LS26	10.000	15.500†	5.500	Yes	P1135	37083	S4	XP4	13.250	21.125†	7.875	Yes	P1136
37012	S4	LS26	11.000	16.250	5.250	Yes	P1135	37085	XP7	LS47	14.000	22.375†	8.375	Yes	None
37013	L1	LS26	14.375	23.000	8.625	Yes	P827	37086	XP7	LS47	14.625	23.750†	9.125	Yes	None
37014	L1	LS26	16.000	26.375	10.375	Yes	P827	37087	XP7	LS47	15.375	25.250†	9.875	Yes	None
37015	S4	L1	9.750	14.500†	4.750	Yes	P1135	37088	S4	LS38	9.875	14.500†	4.625	Yes	P1135
37016	S4	LS27	9.000	13.000†	4.000	Yes	P1135	37089	S4	LS38	12.250	19.625	7.375	Yes	P1134
37017	L3	LS27	14.625	23.500†	8.875	Yes	P867	37090	LS37	LS37	10.000	14.750	4.750	Yes	None
37018	S4	L1	10.000	15.500†	5.500	Yes	P1135	37091	LS39	LS39	13.125	20.875	7.750	Yes	None
37019	S4	XP4	8.875	13.250	4.375	No	P1134	37093	S4	XP8	8.875	13.250	4.375	No	P1135
37021	XP7	LS47	14.500	24.000	9.500	Yes	None	37094	LS39	L2	14.875	24.375	9.500	Yes	None
37022	S4	LS23	9.625	14.375	4.750	Yes	P1134	37095	S4	LS26	10.125	14.625†	4.500	Yes	P1135
37024	S4	L1	13.375	21.875	8.500	Yes	P1134	37096	S4	XP8	8.875	13.375	4.500	No	P1135
37026	S4	XP4	12.875	20.375†	7.500	Yes	P1136	37097	S4	XP1	8.750	13.375	4.625	No	P1134
37027	XP12	L1	12.750	20.000†	7.250	Yes	None	37098	L1	L1	11.750	18.250	6.500	Yes	None
37029	L1	L1	14.375	23.000	8.625	Yes	None	37099	LS39	LS39	11.625	16.500†	4.875	Yes	None
37030	S4	LS82	9.250	13.625	4.375	Yes	P1134	37100	S4	LS23	9.625	14.750	5.125	Yes	P1134
37031	S4	LS23	10.500	16.375	5.875	Yes	P1134	37101	L1	L1	15.125	24.875	9.750	Yes	None
37032	L3	L3	13.875	21.500†	7.625	Yes	P575	37102	S5	LS47	9.500	13.750†	4.250	Yes	P1167
37033	S4	L3	13.250	20.875†	7.625	Yes	P81 P1134	37103	LS47	LS47	15.500	24.625	9.125	Yes	None
37034	S4	LS26	10.000	14.750†	4.750	Yes	P1135	37104	S5	LS47	14.000	21.750†	7.750	Yes	P1167
37035	XP7	LS26	15.000	25.125	10.125	Yes	P941	37105	LS47	LS47	15.500	24.625	9.125	Yes	None
37036	S4	L1	11.625	18.375	6.750	Yes	P1135	37108	S4	LS23	10.375	15.250	4.875	Yes	P1134
37037	L1	LS26	13.500	21.750	8.250	Yes	None	37109	LS78	L3	12.875	19.625†	6.750	Yes	P120
37038	L1	LS26	15.000	24.750	9.750	Yes	None	37110	LS27	LS26	10.625	15.750†	5.125	Yes	None
37039	L1	LS26	15.875	26.375	10.500	Yes	None	37111	S4	XP5	9.375	14.500	5.125	No	P1134
37040	LS37	LS37	11.875	18.375	6.500	Yes	P816	37112	L1	L1	12.375	19.000†	6.625	Yes	None
37041	L1/CP5	LS47	14.125	22.875	8.750	Yes	P19	37113	L3	L3	13.250	20.375†	7.125	Yes	P575
37042	LS40	LS40	13.375	21.000	7.625	Yes	None	37114	L3	L3	12.875	19.500†	6.625	Yes	P575
37044	XP7	LS47	16.125	26.750†	10.625	Yes	None	37116	S4	L1	10.250	14.875†	4.625	Yes	P1135
37045	L2	L2	13.125	20.250†	7.125	Yes	None	37117	S4	LS26	13.500	22.000	8.500	Yes	P1135
37046	LS39	L2	15.750	26.125	10.375	Yes	None	37118	S4	LS26	10.250	15.000†	4.750	Yes	P1135
37047	S4	LS23	8.125	12.125	4.000	Yes	P1137	37120	S4	LS38	14.500	24.375	9.875	Yes	P1135
37049	L1/CP5	LS36	10.000	14.625	4.625	Yes	P19	37121	L1	LS38	11.875	18.375	6.500	Yes	None
37050	S4	XP5	9.500	13.750†	4.250	No	P1134	37122	S4	XP4	13.625	18.000†	4.375	Yes	P941 P1135
37051	L1	LS26	12.000	18.125†	6.125	Yes	None	37123	LS28	LS28	11.375	17.000†	5.625	Yes	None
37052	L1	LS26	14.375	23.000	8.625	Yes	None	37125	S4	XP5	9.500	13.750†	4.250	No	P1134
37053	S4	LS38	10.750	15.875†	5.125	Yes	P1135	37128	S4	L1	9.375	14.250†	4.875	Yes	P1135
37054	S4	LS26	10.500	15.875†	5.375	Yes	P1135	37129	S4	XP4	8.375	12.250	3.875	No	P1134
37055	LS26	LS26	14.000	22.500†	8.500	Yes	None	37130	LS77	LS39	11.750	16.000†	4.250	Yes	None
37058	S4	XP4	8.500	12.375	3.875	No	P1134	37131	S5	XP5	10.250	14.875†	4.625	Yes	P1167
37060	S4	XP5	10.250	15.125†	4.875	Yes	P1135	37132	S4	LS26	14.250	23.875	9.625	Yes	P1135
37061	LS28	LS26	12.000	18.125†	6.125	Yes	None	37133	S4	LS39	10.000	14.375†	4.375	Yes	P1136
37062	LS77	LS39	11.250	16.500†	5.250	Yes	None	37134	S4	LS26	16.000	27.500	11.500	Yes	P1136
37063	S4	XP5	9.250	14.000	4.750	No	P1134	37135	XP12	LS37	12.500	19.625†	7.125	Yes	None
37064	LS74	LS74	14.750	23.125†	8.375	Yes	None	37137	S4	XP5	8.500	13.000	4.500	No	P1135
37065	LS28	LS28	12.000	18.125†	6.125	Yes	None	37138	LS28	LS28	14.625	22.750†	8.125	Yes	None
37066	S4	XP2	8.625	13.000	4.375	No	P1135	37140	LS28	LS28	15.375	24.625†	9.250	Yes	None
37067	XP8	LS39	14.625	23.500	8.875	Yes	None	37144	LS26	LS26	13.750	21.750	8.000	Yes	None
37068	S4	LS37	9.750	15.000	5.250	No	P1135	37145	LS26	LS26	14.375	23.125	8.750	Yes	None
37069	XP8	LS39	15.625	26.250	10.625	Yes	None	37146	S1	LS40	15.875	23.375†	7.500	No	P906
37070	S4	LS26	12.125	18.250†	6.125	Yes	P1134	37147	S4	LS43	14.250	23.875	9.625	Yes	P1135
37071	S4	LS7	15.875†	20.750†	4.875	Yes	P1278	37148	S4	LS43	16.125	27.375	11.250	Yes	P1136
37072	S4	XP5	9.375	14.500	5.125	Yes	P1134	37149	S4	XP5	10.375	14.375†	4.000	Yes	P1135
37073	L1	L1	13.000	20.750	7.750	Yes	None	37150	LS47	LS47	15.625	23.750†	8.125	Yes	None
37074	L1	S4	12.125	19.250	7.125	Yes	P1137	37151	S4	SPEC	11.000	15.125†	4.125	Yes	P1135
37075	L3	LS43	13.625	21.250†	7.625	Yes	P867	37152	LS47	LS47	16.875	25.500†	8.625	Yes	None
37076	L3	LS43	14.875	23.625†	8.750	Yes	P867	37153	S4	XP5	10.500	13.500†	3.000	Yes	P1135
37077	S4	LS23	8.875	13.750	4.875	Yes	P1134	37154	LS26	LS26	14.125	20.125†	6.000	Yes	None
37078	L1	L1	12.625	20.000	7.375	Yes	None	37155	LS27	LS27	10.500	16.625†	6.125	Yes	None
37080	S4	LS26	12.500	20.750†	8.250	Yes	P1135	37156	LS26	LS26	12.750	20.250†	7.500	Yes	None
37081	S4	XP4	13.000	20.750†	7.750	Yes	P1136	37157	S4	L3	12.500	20.000†	7.500	Yes	P81 P1134

† Bumper Stop Unit. Dimension shown at Bumper Contact.

‡ Hydraulic Lockout Unit. Dimension shown at Lockout Contact.

Product Specifications Subject to Change Without Notice.

SHOCKS

LOAD ADJUSTING SHOCKS

AIR SHOCKS

CARTRIDGES

STRUTS

LIFT SUPPORTS

MOUNTING & LENGTH CHARTS—SHOCKS

PART NO.	MOUNTING		LENGTHS		DUST		PARTS PACK	PART NO.	MOUNTING		LENGTHS		DUST		PARTS PACK
	Upper	Lower	Comp.	Ext.	Trav.	SHIELD			Upper	Lower	Comp.	Ext.	Trav.	SHIELD	
SENSA-TRAC® TRUCK SHOCK ABSORBERS — Continued								SENSA-TRAC® MONOTUBE SHOCK ABSORBERS — Continued							
37158	LS52	LS30	14.500	23.250†	8.750	Yes	None	39013	S1	LS6	17.125†	20.875	3.750	Yes	17110322
37159	S4	LS23	10.125	15.000†	4.875	Yes	P1134	39014	S1	LS6	15.375†	19.750	4.375	Yes	17110326
37160	S4	LS78	11.875	18.500†	6.625	Yes	P1134	39016	S1	SPEC	14.500†	17.250†	2.750	Yes	17110450
37161	S4	XP4	13.000	20.750†	7.750	Yes	P941 P1136	39018	S1	LS6	18.125	19.500	1.375	Yes	17110322
37162	LS29	LS25	13.750	21.750†	8.000	Yes	None	39019	S1	LS6	14.750†	17.750†	3.000	Yes	17110326
37163	S5	XP5	10.250	15.000†	4.750	Yes	P1167	39020	S1	LS6	19.000†	19.875†	0.875	Yes	17110326
37164	LS47	LS47	16.000	26.000†	10.000	Yes	None	39021	S1	LS6	18.500†	18.875†	0.375	Yes	17110326
37166	LS47	LS47	14.625	23.500†	8.875	Yes	None	39024	S1	L1	10.250	14.125†	3.875	Yes	P260
37177	S4	XP4	11.625	18.000†	6.375	Yes	P941 P1135	39026	S1	XP11	11.250	17.500	6.250	No	17110076
37178	S4	SPEC	10.750	15.375†	4.625	Yes	P1135	39027	SPEC	LS31	17.125†	19.750†	2.625	Yes	None
37181	S5	LS42	10.250	15.125†	4.875	Yes	P1167	39028	S1	SPEC	9.875	14.000	4.125	Yes	17110453
37186	S4	S4	14.000	24.250	10.250	Yes	Two P1134	39030	S1	SPEC	14.000†	19.125	5.125	Yes	P609
37187	LS37	L1/CP5	9.375	14.250	4.875	Yes	P19	39031	LS27	SPEC	14.500†	18.125†	3.625	Yes	None
37188	L1/CP3L1/CP3		14.000	23.625	9.625	Yes	P572 P576	39032	S1	SPEC	11.250	17.500	6.250	No	P341
37189	L2	L2	15.250	25.625	10.375	Yes	None	39033	S1	LS6	15.125	20.000	4.875	Yes	17110326
37190	XP9	LS38	10.625	15.750†	5.125	No	None	39040	S2	LS34	11.125	17.000	5.875	Yes	None
37191	S3	S3	13.000	21.625	8.625	Yes	Two P171	39041	S1	LS6	14.625	19.625	5.000	Yes	17110326
37192	L3	S3	13.625	21.750	8.125	Yes	P120 P171	39042	S1	LS6	17.625	18.875	1.250	Yes	17110322
37195	SPEC	SPEC	8.375	11.375	3.000	Yes	17110284	39043	S1	LS6	14.625	19.625	5.000	Yes	17110322
37196	SPEC	SPEC	8.875	12.375	3.500	Yes	17110286	39044	S1	LS6	17.750	18.875	1.125	Yes	17110322
37197	S	S	12.875	21.500	8.625	Yes	17110046	39045	S1	LS6	16.500	18.250	1.750	Yes	17110322
37198	LS55	S	13.625	22.000	8.375	Yes	17110331	39046	S1	LS6	17.750	19.125	1.375	Yes	17110322
37199	S4	L1	14.375	24.250†	9.875	Yes	P1137	39047	S1	LS6	18.875	22.500	3.625	Yes	17110326
37200	LS3	LS3	11.250	17.375	6.125	Yes	None	39050	S1	LS6	18.375	22.500	4.125	Yes	17110326
37201	LS7	S3	10.125	15.625	5.500	Yes	P591	39051	S2	SPEC	14.750	18.625	3.875	No	None
37202	LS26	LS26	14.875	21.250±	6.375	Yes	None	39052	S1	LS10	15.000	24.000	9.000	No	17110495
37203	LS52	LS28	14.000	21.875†	7.875	Yes	None	39100	S1	LS8	16.375	24.125†	7.750	No	None
37204	LS74	LS52	15.125	24.250†	9.125	Yes	None	39101	SPEC	LS30	19.000†	20.500†	1.500	Yes	None
37206	S5	XP12	9.875	14.250†	4.375	Yes	P1167	39102	S1	LS10	15.000	24.000	9.000	No	17110495
37207	LS47	LS47	16.000	26.500	10.500	Yes	None	39105	S1	SPEC	14.513	18.060	3.547	Yes	None
37208	S5	LS47	10.750	15.875†	5.125	Yes	P1167	SPECIALTY SHOCK ABSORBERS							
37217	S4	LS51	15.250	25.125†	9.875	Yes	P1137	40004	S4	LS38	13.625	18.000	4.375	Yes	None
37218	LS38	LS38	11.375	17.375	6.000	Yes	None	40005	S4	XP7	13.500	18.000	4.500	Yes	None
37220	S4	LS26	9.750	14.750	5.000	No	P1135	40006	XP7	LS26	15.000	24.000	9.000	Yes	None
37231	S4	LS22	13.000	21.250†	8.250	Yes	P1134	40007	XP7	LS26	15.000	24.000	9.000	Yes	None
37232	LS29	XP7	14.500	23.750	9.250	Yes	None	40008	SPEC	SPEC	13.750	17.250	3.500	No	None
37233	LS29	XP7	14.375	22.750	8.375	Yes	None	40009	SPEC	SPEC	13.750	17.250	3.500	No	None
37234	LS29	LS29	13.750	22.375†	8.625	Yes	None	40010	SPEC	SPEC	15.000	17.750	2.750	Yes	None
37237	S4	LS51	17.375†	23.500†	6.125	Yes	P1136	40011	SPEC	SPEC	15.000	17.750	2.750	Yes	None
37238	S4	LS23	13.625	22.500	8.875	Yes	P1134	40012	SPEC	SPEC	14.250	17.750	3.500	No	None
37239	S4	LS23	13.125	21.500	8.375	Yes	P1134	40013	SPEC	SPEC	14.250	17.750	3.500	No	None
37240	S5	LS54	14.875	24.000†	9.125	Yes	P1167 P1336	40014	SPEC	SPEC	15.500	22.000	6.500	No	None
37241	LS28	LS29	17.625	23.250	5.625	Yes	None	40015	SPEC	SPEC	15.500	22.000	6.500	No	None
37242	LS28	LS29	14.625	22.250	7.625	Yes	None	40018	S6	LS45	13.500	18.375	4.875	Yes	None
37243	S4	L1	13.000	21.500	8.500	Yes	P1137	40023	S1	XP11	12.000	16.000	4.000	No	None
37244	LS51	LS56	10.875	15.750	4.875	Yes	None	40024	S1	XP11	12.000	16.000	4.000	No	None
37246	LS39	LS39	11.500	16.875	5.375	Yes	None	40025	S1	SPEC	12.250	15.750	3.500	No	None
37249	LS66	SPEC	14.000	22.000	8.000	Yes	None	40026	S1	SPEC	12.250	15.750	3.500	No	None
37269	S4	LS26	12.375	19.750	7.375	Yes	P1134	40029	SP	XP11	16.500	25.625	9.125	Yes	None
37283	S5	LS29	10.100	15.100	4.400	Yes	None	40030	SP	XP11	16.500	25.625	9.125	Yes	None
SENSA-TRAC® MONOTUBE SHOCK ABSORBERS								40031	LS43	LS43	15.000	22.500	7.500	Yes	None
39001	S1	LS6	15.125†	20.000	4.875	Yes	17110326	40032	LS43	LS43	15.250	22.750	7.500	Yes	None
39002	S1	SPEC	13.625†	18.375	4.750	Yes	P341	40033	S1	SPEC	11.000	15.375	4.375	Yes	None
39003	LS49	LS49	9.375	13.250	3.875	No	None	40034	LS43	LS43	15.250	22.750	7.500	Yes	None
39004	S1	LS12	11.875	18.250†	6.375	Yes	P46	40035	S1	LS42	10.875	15.375	4.500	Yes	None
39005	S1	SPEC	14.750†	17.250†	2.500	Yes	P990	40036	LS43	LS43	15.625	23.875	8.125	Yes	None
39006	S1	XP11	11.250	17.500	6.250	No	P341	40037	S1	XP5	10.375	14.500	4.125	Yes	None
39007	S1	LS64	10.000	14.250†	4.250	No	P991	40038	S1	SPEC	11.000	15.375	4.375	Yes	None
39008	LS80	LS80	10.750	14.750†	4.000	Yes	None	40039	LS43	LS43	15.625	23.875	8.125	Yes	None
39009	LS80	LS80	10.750	14.625†	3.875	Yes	None	40040	LS43	LS43	16.875	25.625	8.250	Yes	None
39011	S1	LS31	11.625	17.875	6.250	Yes	P260	40041	S1	SPEC	11.000	15.375	4.375	Yes	None
39012	S1	LS27	17.625†	22.250†	4.625	Yes	P1019	40042	LS43	LS43	15.250	22.750	7.500	Yes	None

† Bumper Stop Unit. Dimension shown at Bumper Contact.
± Hydraulic Lockout Unit. Dimension shown at Lockout Contact.

MOUNTING & LENGTH CHARTS—SHOCKS

PART NO.	MOUNTING		LENGTHS		DUST		PARTS PACK		PART NO.	MOUNTING		LENGTHS		DUST		PARTS PACK	
	Upper	Lower	Comp.	Ext.	Trav.	SHIELD				Upper	Lower	Comp.	Ext.	Trav.	SHIELD		
SPECIALTY SHOCK ABSORBERS — Continued									GAS-MAGNUM® RV SHOCK ABSORBERS — Continued								
40043	S1	SPEC	11.000	15.375	4.375	Yes	None		555009	XP7	LS47	14.000	22.375	8.375	Yes	None	
40044	S1	SPEC	11.000	15.375	4.375	Yes	None		555010	S5	LS15	13.500	22.125	8.625	Yes	P1167	
40045	LS43	LS43	15.250	22.750	7.500	Yes	None		555011	L2	LS39	14.625	24.125	9.500	Yes	None	
40200	LS77	LS77	11.625	17.875	6.125	Yes	None		555012	L2	L2	12.125	19.125	7.000	Yes	None	
40201	LS77	LS77	11.625	17.875	6.125	Yes	None		555013	L2	L2	16.000	27.000	11.000	Yes	None	
40202	LS28	LS28	11.625	17.875	6.125	Yes	None		555014	L1	LS39	15.000	23.375†	8.375	Yes	None	
40204	LS32	LS32	12.125	18.375	6.250	Yes	None		555015	L1	LS39	15.000	23.375†	8.375	Yes	None	
40205	LS32	LS32	12.125	18.375	6.250	Yes	None		555020	S5	LS38	13.500	22.500	9.000	Yes	P1167	
40206	SPEC	SPEC	12.500	19.250	6.750	Yes	None		555025	S4	S4	8.625	13.500†	4.875	Yes	Two P1134	
40207	SPEC	SPEC	12.375	19.000	6.625	Yes	None		555026	LS54	LS54	14.000	21.250†	7.250	Yes	None	
40208	SPEC	SPEC	12.375	19.000	6.625	Yes	None		555027	LS54	LS54	14.000	21.250†	7.250	Yes	None	
40209	LS43	LS43	14.875	22.875	8.000	Yes	None		555028	LS54	LS54	15.000	23.250†	8.250	Yes	None	
40210	LS43	LS43	14.875	22.875	8.000	Yes	None		555029	LS54	LS54	15.000	23.250†	8.250	Yes	None	
40211	S1	SPEC	18.250	24.375	6.125	Yes	None		555031	S5	L1	10.000	14.875†	4.875	Yes	P1167	
GAS-MAGNUM® 65 SHOCK ABSORBERS									555032	S5	LS26	13.250	22.000	8.750	Yes	P1167	
65116	L4	L4	15.375	24.250	8.875	Yes	None		555033	S5	LS38	10.625	16.000†	5.375	No	P1167	
65421	LS54	LS54	15.500	24.250†	8.750	Yes	None		555034	S5	LS38	13.625	22.500	8.875	Yes	P1167	
65430	L4	L4	13.375	19.375†	6.000	Yes	None		555035	LS37	LS37	9.875	14.875	5.000	Yes	None	
65448	L4	L4	17.000	25.625†	8.625	Yes	None		555036	LS39	LS39	15.000	24.625†	9.625	Yes	None	
65464	L4	L4	13.375	19.250†	5.875	Yes	None		555037	S5	XP8	10.125	15.625	5.500	No	P1167	
65472	L4	S6	15.125	23.125†	8.000	Yes	P1071 P1231		555038	LS39	LS39	12.875	21.000	8.125	Yes	None	
65474	L4	L4	13.625	20.000†	6.375	Yes	None		555039	S5	XP8	9.125	13.875	4.750	No	P1167	
65482	LS54	LS54	17.375	28.000†	10.625	Yes	None		555041	LS78	LS78	14.125	22.875	8.750	Yes	None	
GAS-MAGNUM® 60 SHOCK ABSORBERS									555042	LS76	LS76	8.250	11.500	3.250	Yes	None	
66502	LS54	LS54	13.875	22.500	8.625	Yes	None		555043	S4	S4	12.500	20.875	8.375	Yes	Two P1134	
66618	L3	L3	13.375	21.500	8.125	Yes	P575		555045	LS47	LS47	12.750†	16.125†	3.375	Yes	None	
66636	LS54	LS54	13.375	20.000†	6.625	Yes	None		555046	L1	LS47	13.750†	19.250†	5.500	Yes	P19	
66642	LS47	LS47	14.125	22.875	8.750	Yes	None		555944	S4	L1	13.750	23.375	9.625	Yes	P837 P1098	
66666	LS38	LS38	13.875	22.875	9.000	Yes	None		555949	L1	L1	17.125	29.375	12.250	Yes	Two P576	
66667	LS38	LS38	12.250	19.750	7.500	Yes	None		557001	LS54	LS54	17.375	29.125	11.750	Yes	P1232	
66691	LS41	LS53	15.000	24.000	9.000	Yes	None		557002	LS54	LS54	16.875	27.625	10.750	No	None	
66692	LS71	S6	13.750	22.625	8.875	Yes	P1071 P1231		557003	LS53	LS37	10.625	15.750	5.125	Yes	P1234	
66717	S4	L3	14.250	23.375	9.125	Yes	P120 P936		557004	LS47	LS47	14.000	22.000	8.000	Yes	None	
							P1134		557007	LS54	LS54	16.000	25.625	9.625	No	None	
66957	L4	L4	15.250	23.250†	8.000	Yes	None		557009	L4	L4	15.500	23.750†	8.250	Yes	None	
GAS-MAGNUM® SEVERE SERVICE SHOCK ABSORBERS									557010	LS54	LS54	15.375	23.750†	8.375	Yes	None	
550010	S4	XP4	9.375	13.750†	4.375	No	P1136		557011	LS39	LS54	15.250	23.875†	8.625	Yes	None	
550011	S4	L1	12.375	20.000†	7.625	Yes	P576 P1136		557012	LS54	LS54	13.625	20.500†	6.875	Yes	None	
550012	S4	XP4	9.375	14.250	4.875	No	P1134		557013	LS54	LS54	13.500	20.000†	6.500	Yes	None	
550013	XP7	L1	13.250	21.250†	8.000	Yes	P576 P941		557014	LS54	LS54	15.750	24.625†	8.875	Yes	None	
550015	XP7	LS47	13.875	22.375†	8.500	Yes	None		557015	LS54	LS54	17.875	29.000†	11.125	Yes	None	
550016	S4	XP4	12.625	20.375†	7.750	Yes	P1136		557018	LS54	LS54	13.500	20.000†	6.500	Yes	None	
550017	XP12	L1	17.750	20.125†	2.375	Yes	None		557020	LS54	LS54	16.500	26.250†	9.750	Yes	None	
550018	S4	LS26	12.500	20.000†	7.500	Yes	P1136 P1344		557022	LS54	LS54	12.250	17.625†	5.375	Yes	None	
550019	LS47	LS28	13.125	21.125	8.000	Yes	None		557023	LS54	LS54	15.375	23.875†	8.500	Yes	None	
550020	LS48	LS43	12.625	20.250	7.625	Yes	None		557026	LS54	LS54	13.625	20.500†	6.875	Yes	None	
550051	S4	L1	12.375	20.000†	7.625	Yes	P576 P1136		557027	LS54	LS54	15.250	23.500†	8.250	Yes	None	
550052	XP7	L1	13.375	21.250†	7.875	Yes	P576 P941		557028	LS54	LS54	16.875	27.000†	10.125	Yes	None	
550053	XP7	LS47	13.625	21.875†	8.250	Yes	None		557030	LS59	LS60	14.750	22.250†	7.500	Yes	None	
550054	XP12	L1	12.750	20.250†	7.500	Yes	None		557031	LS54	LS54	16.375	27.000	10.625	Yes	None	
550055	S4	LS26	12.375	20.125†	7.750	Yes	P1136 P1344		557032	LS54	S6	13.625	22.000	8.375	Yes	P1071 P1231	
553001	S5	LS53	13.875	17.000	3.125	Yes	P1365		557033	S6	S6	11.250	16.500	5.250	Yes	P1071 P1231	
553002	S1	SPEC	14.375	21.375	7.000	No	None		557034	S5	LS39	14.500	22.875†	8.375	Yes	P1167	
GAS-MAGNUM® RV SHOCK ABSORBERS									557035	S5	LS39	14.500	22.875†	8.375	Yes	P1167	
555001	S4	S4	7.875	11.875†	4.000	Yes	Two P1134		557036	LS59	LS60	16.750	27.000	10.250	Yes	None	
555002	L1	L1	8.625	12.750	4.125	Yes	P1221		557037	LS59	S6	13.625	21.500	7.875	Yes	P1071 P1231	
555003	L1	L1	9.625	14.750	5.125	Yes	P1221		557038	LS60	LS60	16.740	26.990	10.250	Yes	None	
555004	L1	L1	11.250	17.875	6.625	Yes	P1221		REFLEX™ TRUCK SHOCK ABSORBERS								
555005	L1	L1	12.000	19.500	7.500	Yes	P1221		911011	S4	LS26	9.875	14.500†	4.625	Yes	P1135	
555006	L1	L1	13.375	22.250	8.875	Yes	P1221		911013	L1	LS26	14.250	23.000	8.750	Yes	P827	
									911014	L1	LS26	16.000	26.375	10.375	Yes	P827	
									911015	S4	L1	9.750	14.250†	4.500	Yes	P1135	

† Bumper Stop Unit. Dimension shown at Bumper Contact.

‡ Hydraulic Lockout Unit. Dimension shown at Lockout Contact.

Product Specifications Subject to Change Without Notice.

SHOCKS

LOAD ADJUSTING SHOCKS

AIR SHOCKS

CARTRIDGES

STRUTS

LIFT SUPPORTS

MOUNTING & LENGTH CHARTS—SHOCKS

PART NO.	MOUNTING		LENGTHS		DUST		PARTS PACK		PART NO.	MOUNTING		LENGTHS		DUST		PARTS PACK	
	Upper	Lower	Comp.	Ext.	Trav.	SHIELD				Upper	Lower	Comp.	Ext.	Trav.	SHIELD		
REFLEX™ TRUCK SHOCK ABSORBERS — Continued									REFLEX™ TRUCK SHOCK ABSORBERS — Continued								
911019	S4	XP4	9.000	13.250	4.250	No	P1134		911138	LS28	LS28	14.500	22.750†	8.250	Yes	None	
911021	XP7	LS47	14.500	24.000	9.500	Yes	None		911140	LS28	LS28	15.250	24.625†	9.375	Yes	None	
911022	S4	LS23	9.500	14.250	4.750	Yes	P1134		911144	LS26	LS26	13.625	21.750	8.125	Yes	None	
911024	S4	L1	13.375	22.000	8.625	Yes	P1134		911145	LS26	LS26	14.375	23.125	8.750	Yes	None	
911026	S4	XP4	12.875	20.375†	7.500	Yes	P1136		911147	S4	LS43	14.375	24.000	9.625	Yes	P1135	
911027	XP12	L1	12.750	20.000†	7.250	Yes	None		911148	S4	LS43	16.125	27.500	11.375	Yes	P1136	
911029	L1	L1	14.250	23.000	8.750	Yes	None		911149	S4	XP5	10.375	14.375†	4.000	Yes	P1135	
911030	S4	LS82	9.250	13.750	4.500	Yes	P1134		911150	LS47	LS47	15.500	23.875†	8.375	Yes	None	
911032	L3	L3	13.750	21.500†	7.750	Yes	P575		911151	S4	SPEC	10.875	15.125†	4.250	Yes	P1135	
911033	S4	L3	13.250	20.875†	7.625	Yes	P81 P1134		911152	LS47	LS47	16.750	25.500†	8.750	Yes	None	
911034	S4	LS26	10.000	14.750†	4.750	Yes	P1135		911153	S4	XP5	9.500	13.500†	4.000	Yes	P1135	
911035	XP7	LS26	15.000	25.000	10.000	Yes	P941		911156	LS26	LS26	13.000	20.250†	7.250	Yes	None	
911036	S4	L1	11.625	18.500	6.875	Yes	P1135		911157	S4	L3	12.500	20.000†	7.500	Yes	P81 P1134	
911037	L1	LS26	13.500	21.750	8.250	Yes	None		911158	LS52	LS30	14.625	23.250†	8.625	Yes	None	
911038	L1	LS26	14.875	24.750	9.875	Yes	None		911161	S4	XP4	13.000	20.750†	7.750	Yes	P941 P1136	
911039	L1	LS26	15.750	26.375	10.625	Yes	None		911162	LS29	LS25	13.750	21.750†	8.000	Yes	None	
911040	LS37	LS37	11.750	18.375	6.625	Yes	P816		911163	S5	XP5	10.250	15.000†	4.750	Yes	P1167	
911041	L1/CP5	LS47	14.000	22.875	8.875	Yes	P19		911164	LS47	LS47	16.000	26.125†	10.125	Yes	None	
911042	LS40	LS40	13.250	21.000	7.750	Yes	None		911166	LS47	LS47	14.750	23.500†	8.750	Yes	None	
911043	LS77	LS39	11.250	16.500†	5.250	Yes	None		911167	LS47	LS47	14.375	23.000†	8.625	Yes	None	
911044	XP7	LS47	16.250	26.750†	10.500	Yes	None		911168	LS47	LS47	15.000	24.000†	9.000	Yes	None	
911047	S4	LS23	8.125	12.125	4.000	Yes	P1137		911171	S4	LS23	8.000	11.875	3.875	Yes	P1137	
911049	L1/CP5	LS36	10.000	14.625	4.625	Yes	P19		911172	L1	L1	14.000	22.625	8.625	Yes	None	
911050	S4	XP5	9.500	13.750†	4.250	No	P1134		911173	S5	L1	10.250	15.000†	4.750	Yes	P1167	
911052	L1	LS26	14.250	23.000	8.750	Yes	None		911174	XP7	LS26	15.250	25.125	9.875	Yes	None	
911055	LS26	LS26	14.000	22.500†	8.500	Yes	None		911175	L1	LS26	13.750	21.875†	8.125	Yes	None	
911058	S4	XP4	8.500	12.375	3.875	No	P1134		911176	XP7	LS26	16.750	28.250	11.500	Yes	None	
911061	LS28	LS26	11.875	18.125†	6.250	Yes	None		911177	S4	XP4	11.625	18.000†	6.375	Yes	P941 P1135	
911063	S4	XP5	9.250	13.875	4.625	No	P1134		911178	S4	SPEC	10.750	15.250†	4.500	Yes	P1135	
911064	LS74	LS74	14.625	23.125†	8.500	Yes	None		911181	S5	LS42	10.250	15.125†	4.875	Yes	P1167	
911065	LS28	LS28	12.000	18.125	6.125	Yes	None		911183	S6	LS43	11.500	17.250†	5.750	Yes	P1071 P1231	
911071	S4	LS7	15.875†	20.750†	4.875	Yes	P1278		911184	S5	LS54	14.375	23.125†	8.750	Yes	P1167 P1336	
911073	L1	L1	13.000	20.750	7.750	Yes	None		911186	S5	XP12	9.875	14.250†	4.375	Yes	P1167	
911077	S4	LS23	8.750	13.375	4.625	Yes	P1134		911187	LS47	LS47	16.000	26.500	10.500	Yes	None	
911078	L1	L1	12.625	20.000	7.375	Yes	None		911188	S5	LS47	10.750	15.875†	5.125	Yes	P1167	
911080	S4	LS26	12.500	20.750†	8.250	Yes	P1135		911190	LS77	LS39	11.250	15.875†	4.625	Yes	None	
911081	S4	XP4	13.000	20.750†	7.750	Yes	P1136		911191	S5	LS47	9.625	13.750†	4.125	Yes	P1167	
911082	L1	LS25	13.500	21.500†	8.000	Yes	None		911192	LS47	LS47	15.750	26.125	10.375	Yes	None	
911083	S4	XP4	13.250	21.125†	7.875	Yes	P1136		911193	S5	LS47	14.250	22.250†	8.000	Yes	P1167	
911085	XP7	LS47	14.000	22.375†	8.375	Yes	None		911194	L1	LS26	16.625	28.125	11.500	Yes	None	
911086	XP7	LS47	14.750	23.750†	9.000	Yes	None		911195	L1	LS26	14.250	22.875†	8.625	Yes	None	
911087	XP7	LS47	15.500	25.250†	9.750	Yes	None		911196	L1	LS26	18.250	31.000	12.750	Yes	None	
911090	LS37	LS37	9.750	14.750	5.000	Yes	None		911203	LS52	LS28	14.000	21.875†	7.875	Yes	None	
911091	LS39	LS39	13.000	20.875	7.875	Yes	None		911204	LS74	LS52	15.250	24.250†	9.000	Yes	None	
911096	S4	XP8	9.000	13.750	4.750	No	P1135		911218	LS27	LS27	11.500	16.875	5.375	Yes	None	
911099	LS39	LS39	11.500	16.625†	5.125	Yes	None		911219	S4	LS43	13.625†	15.000†	1.375	Yes	P1136	
911102	S5	LS47	9.625	13.750†	4.125	Yes	P1167		911220	S4	LS26	9.750	14.750	5.000	Yes	P1135	
911103	LS47	LS47	15.375	24.625	9.250	Yes	None		911221	S5	XP12	11.000	16.375†	5.375	Yes	P1167	
911104	S5	LS47	14.000	21.750†	7.750	Yes	P1167		911222	LS47	LS47	16.500	27.500	11.000	Yes	None	
911108	S4	LS23	10.375	15.375	5.000	Yes	P1134		911223	S5	LS47	14.500	22.750†	8.250	Yes	P1167	
911109	LS78	L3	12.750	19.500†	6.750	Yes	P120		911225	S4	LS23	8.750	13.375	4.625	Yes	P1134	
911110	LS27	LS26	10.750	15.750†	5.000	Yes	None		911226	L1	LS82	13.375	20.750†	7.375	Yes	None	
911122	S4	XP4	13.625	18.000†	4.375	Yes	P941 P1135		911228	XP7	LS47	13.375	21.000	7.625	Yes	None	
911123	LS28	LS28	11.250	17.000†	5.750	Yes	None		911229	S4	LS21	10.000	14.500	4.500	Yes	P1134	
911128	S4	L1	9.750	14.250†	4.500	No	P1135 P1319		911230	XP7	LS47	14.375	23.000	8.625	Yes	None	
911129	S4	XP4	8.375	12.125	3.750	No	P1134		911238	S4	LS23	13.625	22.500	8.875	No	P1134	
911131	S5	XP5	10.250	14.875†	4.625	Yes	P1167		911239	S4	LS23	13.125	21.500	8.375	Yes	P1134	
911132	S4	LS26	14.250	23.875	9.625	Yes	P1135		911240	S5	LS54	14.875	24.000†	9.125	Yes	P1167 P1336	
911133	S4	LS39	10.000	14.375†	4.375	Yes	P1136		911241	LS28	LS29	14.625	23.250	8.625	Yes	None	
911134	S4	LS26	16.125	27.500	11.375	Yes	P1136		911242	LS28	LS29	14.625	22.375	7.750	Yes	None	
911135	XP12	LS37	12.625	19.625†	7.000	Yes	None		911243	S4	L1	13.000	21.750	8.750	Yes	P1137	
911137	S4	XP5	8.625	12.625	4.000	No	P1137		911245	S4	LS23	8.250	11.750	3.500	Yes	P1137	

† Bumper Stop Unit. Dimension shown at Bumper Contact.

‡ Hydraulic Lockout Unit. Dimension shown at Lockout Contact.

MOUNTING & LENGTH CHARTS—SHOCKS

PART NO.	MOUNTING		LENGTHS		DUST		PARTS PACK	PART NO.	MOUNTING		LENGTHS		DUST		PARTS PACK
	Upper	Lower	Comp.	Ext.	Trav.	SHIELD			Upper	Lower	Comp.	Ext.	Trav.	SHIELD	
REFLEX™ TRUCK SHOCK ABSORBERS — Continued								REFLEX™ MONOTUBE TRUCK SHOCK ABSORBERS — Continued							
911246	LS27	LS27	11.500	17.000	5.500	Yes	None	911519	LS79	LS26	16.000	25.500	9.500	Yes	None
911247	LS29	S3	13.250	21.250	8.000	Yes	None	911520	S4	LS39	10.000	14.500	4.500	Yes	P1136
911248	LS29	S3	12.125	19.000	6.875	Yes	None	911521	S4	LS26	16.250	26.500	10.250	Yes	P1137
911250	S4	LS91	14.125	22.625	8.500	Yes	P1134	911522	S4	XP1	13.250	20.500	7.250	Yes	P1138
911251	LS92	LS91	15.125	24.250	9.125	Yes	None	911523	LS29	LS25	14.125	21.750	7.625	Yes	None
911252	LS92	LS91	14.500	23.000	8.500	Yes	None	911524	S4	XP1	13.375	21.000	7.625	Yes	P11
911253	LS91	LS91	12.000	17.750	5.750	Yes	None	911525	L1	LS25	13.875	21.500	7.625	Yes	None
911255	S4	XP5	9.250	12.875	3.625	Yes	P1135	911526	XP7	LS47	14.750	23.750	9.000	Yes	None
911256	S4	SPEC	10.875	15.125	4.250	Yes	P1136	911527	S6	SPEC	11.125	15.375	4.250	Yes	P1136
911257	S4	XP5	9.875	14.125	4.250	Yes	P1135	911528	SPEC	LS47	15.375	24.000	8.625	Yes	None
911258	LS40	LS40	13.625	21.750	8.125	Yes	None	911529	S4	LS23	8.125	12.125	4.000	Yes	P1137
911259	LS29	LS23	11.000	16.000	5.000	Yes	None	911530	L1	L1	13.000	20.750	7.750	Yes	None
911260	LS29	LS74	15.250	24.000	8.750	Yes	None	911533	LS43	LS43	15.830	24.8	8.98	Yes	None
911261	LS39	LS39	15.500	25.000	9.500	Yes	None	911536	S4	LS26	14.020	21.93	7.91	Yes	None
911262	LS39	LS39	16.500	27.250	10.750	Yes	None	911537	SPEC	LS26	14.690	21.34	6.65	Yes	None
911263	S4	LS43	14.000	20.875	6.875	Yes	P1136	911538	SPEC	LS26	14.690	22.56	7.87	Yes	None
911264	S4	LS43	15.000	23.375	8.375	Yes	P1136	911539	SPEC	LS27	14.760	23.15	8.39	Yes	None
911265	L1	LS26	16.250	27.000	10.750	Yes	None	STEERING STABILIZERS							
911266	S5	LS47	13.625	20.750	7.125	Yes	P1167	SC2911	L1	L1	13.250	22.875	9.625	No	Two P1198
911267	L1	LS26	17.625	29.625	12.000	Yes	None	SC2912	S4	S4	12.625	21.875	9.250	No	Two P1098
911268	L1	LS26	18.500	31.375	12.875	Yes	None	SC2913	L1	L1	14.125	24.000	9.875	No	P837 P847
911270	S5	LS54	14.000	22.250	8.250	Yes	P1167 P1336	SC2914	L1	S4	12.750	21.500	8.750	No	P576 P1034 P1098
911272	S4	LS 50	12.500	19.625	7.125	Yes	P1134	SC2915	L1	L1	12.125	19.875	7.750	No	Two P848
911273	LS49	LS47	13.375	21.000	7.625	Yes	None	SC2916	L1	L1	13.250	22.250	9.000	No	Two P848
911274	LS44	LS44	10.250	14.750	4.500	Yes	None	SC2917	L1	L1	11.625	18.750	7.125	No	Two P848
911275	LS49	LS47	12.375	19.500	7.125	Yes	None	SC2922	LS14	L1	15.375	26.375	11.000	No	P837
911276	LS49	LS47	12.750	20.250	7.500	Yes	None	SC2928	L1	LS37	12.000	19.500	7.500	No	P837
911277	LS28	LS28	14.750	24.000	9.250	Yes	None	SC2936	LS2	LS23	15.000	21.000	6.000	No	None
911278	LS30	LS38	15.125	24.250	9.125	Yes	None	SC2937	L1	LS4	12.000	19.500	7.500	No	P837 P848
911279	S4	LS23	12.750	20.375	7.625	Yes	P1134	SC2939	LS22	LS2	11.625	19.125	7.500	No	None
911280	S4	LS23	13.750	22.375	8.625	Yes	P1134	SC2940	S4	L1	10.625	17.375	6.750	No	P843 P1098
911281	LS40	LS40	12.625	19.500	6.875	Yes	None	SC2941	LS23	LS22	11.500	17.625	6.125	No	None
911282	S5	LS29	11.000	15.375	4.375	Yes	None	SC2942	L1	LS4	12.250	20.125	7.875	No	P837
REFLEX™ MONOTUBE TRUCK SHOCK ABSORBERS								SC2943	LS2	LS2	11.750	19.125	7.375	No	None
911501	S4	SPEC	10.875	15.375	4.500	Yes	P1136	SC2946	L1	L1	16.500	25.625	9.125	No	Two P1034
911502	LS47	LS47	16.750	25.625	8.875	Yes	None	SC2947	LS2	L1	15.375	23.625	8.250	No	P1034
911503	S4	XP5	10.250	14.625	4.375	Yes	P1136	SC2948	LS2	L1	12.500	19.875	7.375	No	P1034
911504	LS47	LS47	15.375	24.125	8.750	Yes	None	SC2951	L1	LS14	17.500	28.875	11.375	No	P837
911505	S4	SPEC	10.875	15.375	4.500	Yes	P1136	SC2953	L1	LS24	13.750	23.000	9.250	No	P837
911506	LS47	LS47	15.375	23.750	8.375	Yes	None	SC2954	L1	LS2	17.875	26.500	8.625	No	P1034
911507	S4	LS42	12.500	15.500	3.000	Yes	P1136	SC2955	LS26	LS26	13.000	21.375	8.375	No	None
911508	LS43	LS43	17.750	27.250	9.500	Yes	None	SC2956	LS4	LS4	13.875	23.250	9.375	No	None
911509	LS28	LS29	14.625	23.250	8.625	Yes	None	SC2957	L1	L1	17.000	26.875	9.875	No	Two P1034
911510	LS28	LS29	14.625	22.375	7.750	Yes	None	SC2958	LS38	LS38	9.250	14.000	4.750	Yes	None
911511	LS77	LS39	11.375	16.625	5.250	Yes	None	SC2960	LS24	LS24	13.625	22.625	9.000	No	None
911512	XP7	LS47	16.000	25.625	9.625	Yes	None	SC2961	LS39	LS38	14.500	24.375	9.875	No	None
911513	S4	XP5	9.625	14.000	4.375	No	P1136	SC2962	LS5	LS24	12.750	20.750	8.000	No	P1326
911514	LS39	LS39	11.375	16.625	5.250	Yes	None	SC2963	L1	LS35	12.500	20.625	8.125	No	P1368
911515	XP2	LS39	16.000	25.250	9.250	Yes	None	SC2964	L1	LS24	14.000	23.500	9.500	No	P1368
911516	S4	XP4	9.000	13.375	4.375	No	P1136	SC2965	S4	L1	15.625	27.375	11.750	No	P1134
911517	XP7	LS47	13.125	14.750	1.625	Yes	None								
911518	S4	XP12	13.000	18.500	5.500	Yes	P1136								

† Bumper Stop Unit. Dimension shown at Bumper Contact.

‡ Hydraulic Lockout Unit. Dimension shown at Lockout Contact.

Product Specifications Subject to Change Without Notice.

MOUNTING & LENGTH CHARTS—LOAD ADJUSTING SHOCKS

PART NO.	MOUNTING		LENGTHS				PARTS PACK		PART NO.	MOUNTING		LENGTHS				PARTS PACK
	Upper	Lower	Comp.	Ext.	Trav.	SPRING				Upper	Lower	Comp.	Ext.	Trav.	SPRING	
SENSA-TRAC® LOAD ADJUSTING SHOCK ABSORBERS									SENSA-TRAC® LOAD ADJUSTING SHOCK ABSORBERS — Continued							
58241	L1/CP3	LS36	9.750	14.375†	4.625	45#	P19		58598	LS74	LS74	14.625	22.125†	7.500	V/R	None
58253	S4	LS38	10.500	16.125†	5.625	40#	P1135		58600	XP7	LS47	16.125	26.750†	10.625	60#	None
58263	S4	XP4	9.125	13.750†	4.625	45#	P1134		58601	L1	LS26	14.250	23.000	8.750	60#	None
58270	S4	XP4	8.750	13.000†	4.250	45#	P1134		58602	L1	LS26	13.375	21.750	8.375	60#	None
58273	S4	XP4	8.750	13.000†	4.250	45#	P1134		58604	L1	LS26	15.750	26.375	10.625	60#	None
58275	S4	LS38	9.250	14.000†	4.750	45#	P1135		58605	S4	LS26	12.375	19.750†	7.375	60#	P1135
58411	XP7	L1/CP3	12.500	20.000†	7.500	28#	P576		58606	XP7	LS47	14.000	22.375†	8.375	60#	None
58417	L1	S4	11.375	18.125	6.750	28#	P1137		58608	L1	LS26	14.250	23.000	8.750	V/R	P827
58427	S4	LS7	14.250†	21.500	7.250	25#	P1278		58609	XP7	LS47	15.375	25.250†	9.875	60#	None
58428	S4	L1/CP3	12.625	20.375†	7.750	28#	P576 P1136		58610	LS47	LS47	15.250	24.625	9.375	60#	None
58484	L2	L2	14.125	23.125	9.000	60#	None		58612	XP7	LS47	14.625	23.750†	9.125	60#	None
58486	L1	L1	11.125	18.000	6.875	V/R	P101		58613	XP8	LS39	14.625	22.375	7.750	37#	None
58496	L2	L2	13.000	21.250	8.250	V/R	P76		58614	XP8	LS39	15.625	25.125	9.500	37#	None
58497	L1	L1	14.000	23.375	9.375	V/R	P829		58615	LS47	LS47	15.250	24.625	9.375	60#	None
58510	S4	L1/CP3	12.750	21.375	8.625	V/R	P577 P591		58616	LS28	LS26	11.875	18.125†	6.250	V/R	None
58518	S4	LS38	12.125	19.625	7.500	60#	P1134		58617	XP7	LS26	15.500	25.125†	9.625	37#	P941
58523	XP7	LS47	14.500	22.750†	8.250	V/R	None		58618	L1	LS26	15.750	26.125	10.375	37#	P827
58527	LS37	LS37	11.625	19.000	7.375	60#	None		58619	L1	LS25	13.500	21.500†	8.000	V/R	P827
58539	S4	S4	10.625	17.875	7.250	V/R	Two P1134		58620	LS28	LS28	11.250	17.000†	5.750	45#	None
58540	XP7	LS14	12.875	21.500	8.625	V/R	P436		58624	LS27	LS26	10.625	15.750†	5.125	45#	None
58551	XP7	S4	12.125	20.375	8.250	V/R	P1137		58625	S4	LS26	13.375	22.125	8.750	60#	P1135
58552	LS41	LS37	11.125	18.000	6.875	V/R	None		58627	L1	L1	14.250	22.500†	8.250	V/R	None
58559	S4	LS38	13.625	22.750	9.125	60#	P1135		58628	S4	LS26	14.250	23.875	9.625	60#	P1135
58567	L1	L1	12.500	20.375	7.875	60#	P573		58629	S5	LS26	16.000	26.375†	10.375	37#	P1167
58568	S4	L1/CP3	12.375	19.875†	7.500	V/R	P576 P1136		58630	LS28	LS28	14.500	22.750†	8.250	37#	None
58571	LS39	L2	15.500	25.000†	9.500	60#	None		58632	LS26	LS26	13.625	21.625†	8.000	60#	None
58574	XP7	L1/CP3	13.375	21.250†	7.875	V/R	P576 P941		58633	LS26	LS26	14.250	23.000†	8.750	60#	None
58575	LS37	LS37	9.375	14.500	5.125	60#	None		58636	LS47	LS47	15.500	23.875†	8.375	60#	None
58577	LS39	L2	13.750	22.500	8.750	V/R	None		58637	LS47	LS47	16.875	25.750†	8.875	60#	None
58578	L1/CP5	LS47	14.000	22.875	8.875	60#	P19		58638	LSA7	LS47	16.000	25.875	9.875	60#	None
58579	S4	S4	11.500	19.250	7.750	V/R	Two P1137		58639	LS47	LS47	15.000	23.625	8.625	60#	None
58587	LS39	S4	11.375	18.125†	6.750	V/R	P1134		58640	LS47	LS47	15.750	26.500	10.750	60#	None
58591	L1	LS26	14.875	24.750	9.875	60#	None		58642	LS38	LS38	15.340	25.170	9.530		None
58592	L1	LS38	12.625	21.000	8.375	60#	P570		58643	LS38	LS38	16.590	27.550	10.660		None
58594	XP12	L1	12.750	20.000†	7.250	V/R	None									
58595	LS39	LS39	13.000	20.875	7.875	60#	P185									

† Bumper Stop Unit. Dimension shown at Bumper Contact.

‡ Hydraulic Lockout Unit. Dimension shown at Lockout Contact.

MOUNTING & LENGTH CHARTS—AIR SHOCKS

PART NO.	MOUNTING		LENGTHS			UNIT L/R	PARTS PACK	PART NO.	MOUNTING		LENGTHS			UNIT L/R	PARTS PACK
	Upper	Lower	Comp.	Ext.	Trav.				Upper	Lower	Comp.	Ext.	Trav.		
MAX-AIR® SHOCKS								MAX-AIR® SHOCKS — Continued							
MA700	S4	L1/CP3	12.750†	21.375	8.625	None	P576 P1134	MA774	L3	LS43	13.500†	21.250†	7.750	None	P867
MA702	XP7	L1/CP4	12.625†	20.750	8.125	None	P72	MA775	L1	LS26	15.500†	25.750†	10.250	None	None
MA704	L2	L2	13.125†	21.250	8.125	None	P76	MA776	XP7	LS26	15.000	24.375†	9.375	L/R	P941
MA705	S4	S4	10.875†	17.375†	6.500	None	Two P1134	MA777	S4	LS26	12.500†	20.500	8.000	None	P1135
MA706	XP7	LS14	13.000†	21.375	8.375	None	P414	MA778	XP5	LS47	13.875†	22.875†	9.000	None	None
MA708	XP7	S4	12.250†	19.875†	7.625	None	P1137	MA779	XP7	LS47	14.500†	23.750†	9.250	None	None
MA709	CP1	S4	10.750†	17.375	6.625	None	P459 P1135	MA780	XP7	LS16	13.375†	21.500	8.125	L/R	None
MA711	S4	LS14	11.875†	19.625	7.750	None	P1134	MA784	LS7	LS7	13.375†	21.500†	8.125	L/R	None
MA717	XP7	L1/CP3	12.750†	20.875	8.125	L/R	P576	MA785	LS14	LS53	9.500†	14.000†	4.500	L/R	P437
MA719	XP7	L1/CP3	14.500†	23.750	9.250	None	P576	MA789	XP7	L1/CP1	12.750†	20.500	7.750	None	P577
MA726	S4	LS38	12.250†	19.750	7.500	None	P1134	MA791	LS83	LS28	15.125†	22.375†	7.250	L/R	None
MA727	L1	L1	12.750†	20.375	7.625	None	P573	MA792	L1	L1	13.000†	21.250	8.250	None	None
MA728	L1/CP5	L1/CP3	14.250†	23.375	9.125	None	P572 P576	MA793	S4	LS26	14.250†	23.750†	9.500	None	P1136
MA730	L1	LS38	12.875†	21.000	8.125	None	None	MA802	L1	S4	11.375	18.125†	6.750	None	P1137
MA733	LS39	L2	15.500†	26.250	10.750	None	None	MA803	LS23	LS30	10.500	16.125†	5.625	L/R	None
MA739	S4	S4	12.375†	20.875	8.500	None	Two P1137	MA805	S4	L1/CP4	12.750†	19.500	6.750	None	P72 P1134
MA743	L1/CP5	LS47	14.000†	23.000	9.000	None	P19	MA809	S4	LS7	14.250†	21.500	7.250	L/R	P1278
MA746	LS38	LS39	13.125†	21.000	7.875	None	P185	MA810	S4	L1/CP3	12.375†	20.500	8.125	None	P576 P1136
MA750	LS39	S4	11.625†	18.875	7.250	None	P1134	MA811	S4	LS4	13.625†	22.250	8.625	None	P1134
MA751	XP7	L1/CP3	13.000†	20.625	7.625	L/R	P576	MA812	L1	L1	12.750†	20.750	8.000	None	None
MA756	S4	LS17	10.250†	16.375	6.125	None	P1135	MA813	LS7	LS7	14.125†	22.875†	8.750	None	None
MA757	LS39	L2	13.875†	22.500	8.625	None	None	MA814	LS32	LS32	12.000†	18.375†	6.375	None	None
MA758	LS74	LS74	14.125†	23.000	8.875	None	None	MA815	S4	L1/CP3	12.250†	19.875†	7.625	None	P576 P1136
MA759	XP7	LS47	14.625†	24.000†	9.375	None	None	MA816	XP8	LS39	13.875†	22.750	8.875	None	None
MA762	XP7	L1/CP4	12.625†	20.625	8.000	None	P72	MA817	LS40	LS40	12.750†	20.875	8.125	None	P185 P188
MA763	S4	XP5	12.125†	20.125	8.000	None	P941 P1136	MA818	L3	LS43	14.875†	23.625†	8.750	None	P867
MA764	XP7	LS47	15.875†	27.125	11.250	None	None	MA819	XP7	L1/CP3	13.375†	21.250†	7.875	L/R	P576
MA765	XP12	L1/CP4	12.875†	20.500†	7.625	None	P72	MA820	L1	L1	14.375†	23.000	8.625	None	None
MA768	LS28	LS26	12.000†	18.500	6.500	None	None	MA821	XP8	LS39	15.250†	26.125	10.875	None	None
MA769	L1	LS26	14.125†	22.875†	8.750	None	P827	MA822	S1	XP7	14.500†	24.375†	9.875	None	P1243
MA770	L1	LS26	15.875†	26.375†	10.500	None	P827	MA824	LS26	LS26	12.750†	20.125†	7.375	None	None
MA771	L1	LS26	14.125†	22.875†	8.750	None	None	MA825	S1	SPEC	15.000	25.750	10.750	None	17110297
MA772	L1	LS26	15.000†	24.750†	9.750	None	None	MA826	LS12	LS42	11.000	16.000	5.000	None	None
MA773	L1	LS26	13.500†	21.750†	8.250	None	None								

† Bumper Stop Unit. Dimension shown at Bumper Contact.
‡ Hydraulic Lockout Unit. Dimension shown at Lockout Contact.

Product Specifications Subject to Change Without Notice.

SHOCKS

LOAD ADJUSTING SHOCKS

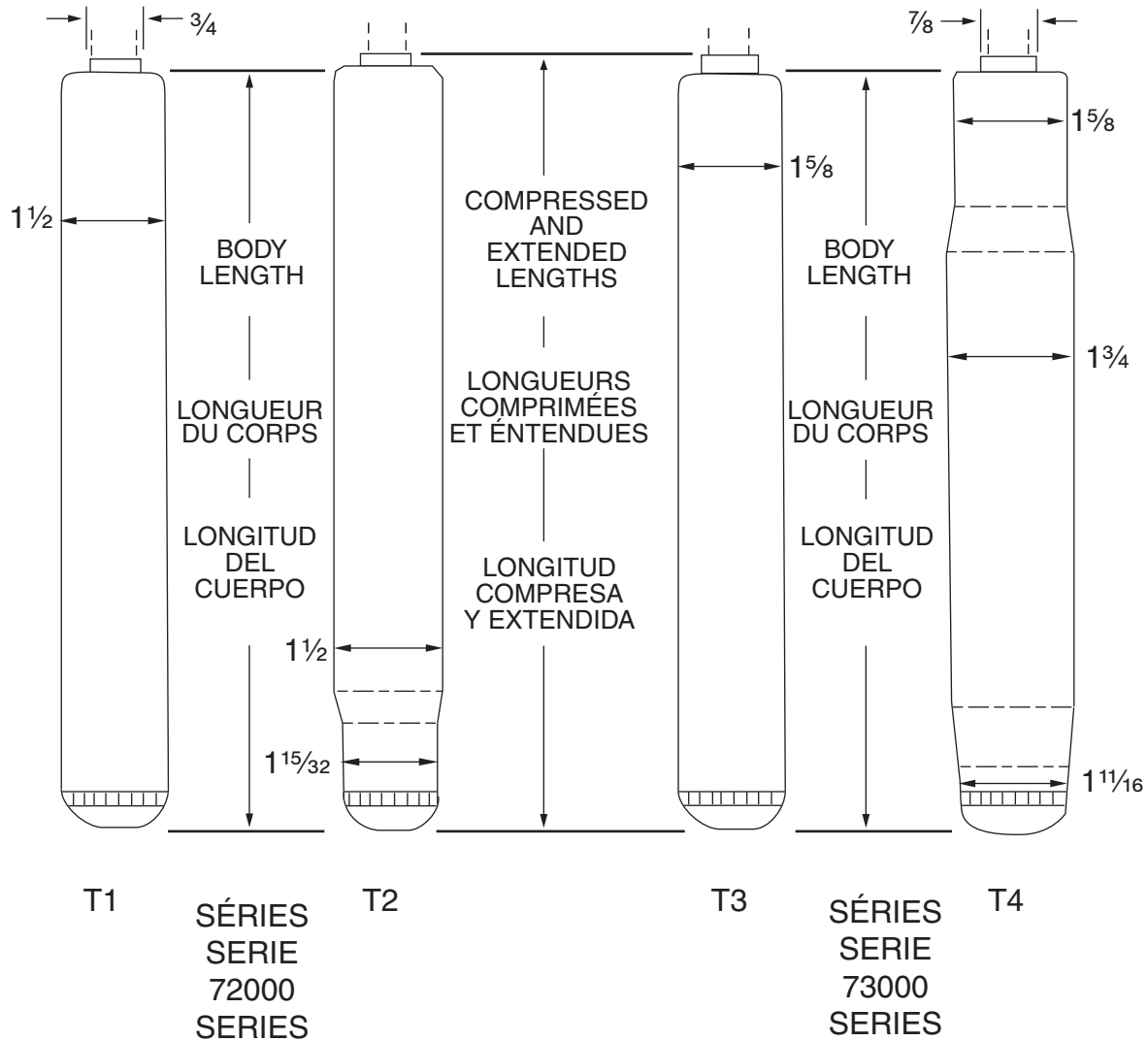
AIR SHOCKS

CARTRIDGES

STRUTS

LIFT SUPPORTS

REPLACEMENT CARTRIDGE DIMENSIONING DIMENSION DE LA CARTOUCHE DE REMPLACEMENT DIMENSIONES DEL CARTUCHO DE REPUESTO



Product specifications shown in this catalog are subject to change without notice.
Les données techniques des produits de ce catalogue peuvent être modifiées sans préavis.
Las especificaciones de los productos en este catálogo están sujetas a cambio sin previo aviso.

MOUNTING & LENGTH CHARTS—CARTRIDGES

PART NO.	TUBE BODY		LENGTHS			PARTS PACK		PART NO.	TUBE BODY		LENGTHS			PARTS PACK	
	Type	Length	Comp.	Ext.	Trav.				Type	Length	Comp.	Ext.	Trav.		
SENSA-TRAC® CARTRIDGES								SENSA-TRAC® CARTRIDGES — Continued							
72801	T4	15.375	15.875	23.000†	7.125	P873		73248	T3	12.750	13.250	19.000†	5.750	P873	
72826	T1	12.500	13.875	20.125†	6.250	17090011		73255	T3	14.000	14.500	21.500†	7.000	P822	
72829	T2	18.250	18.750	26.125†	7.375	P775		73264	T4	13.750	14.750	20.500†	5.750	P1083	
72837	T2	14.500	15.375	23.875†	8.500	P812		73267	T3	13.250	13.500	20.750†	7.250	P1163	
72852	SPEC	14.125	14.875	22.625	7.750	P812		73304	SPEC	14.000	14.375	20.500†	6.125	17090064	
72860	SPEC	16.125	17.000	24.875†	7.875	P812		73305	T3	13.125	13.375	20.500†	7.125	P1163	
72861	-----	17.375	17.375	25.000	7.625	P812		73306	T2	17.875	18.625	23.000†	4.375	17090106	
72867	T2	14.250	15.250	21.125	5.875	P812		73308	T2	13.625	14.375	20.500†	6.125	17090106	
72869	SPEC	13.500	14.625	21.750†	7.125	P812		73309	T2	17.875	18.625	23.000†	4.375	17090106	
72870	T2	13.375	14.250	20.250†	6.000	P812		73311	T2	17.875	18.125	23.125†	5.000	17090124	
72871	T4	17.500	17.500	24.750†	7.250	17090090		73312	SPEC	17.875	18.250	23.000	4.750	17090070	
72873	T2	13.000	14.500	21.125†	6.625	P835		73313	T2	17.875	18.125	23.125†	5.000	17090124	
72874	T2	12.875	13.750	19.750†	6.000	P812		73314	T2	13.875	14.125	20.625†	6.500	17090064	
72876	SPEC	12.375	13.875	20.000†	6.125	P812		73405	T4	13.750	14.000	19.750	5.750	None	
72878	T2	12.750	14.125	20.125†	6.000	P832		73453	T4	13.750	13.750	20.750†	7.000	17090125	
72880	T2	14.500	15.750	22.125†	6.375	None		73934	SPEC	14.000	14.500	20.625†	6.125	P593	
72881	SPEC	13.750	14.750	21.250†	6.500	None		73935	T3	15.375	16.000	23.875†	7.875	P821	
73203	T3	15.000	16.250	23.000†	6.750	P804		73937	T3	15.875	16.375	24.250†	7.875	P596 P815	
73204	T3	13.125	13.625	20.125†	6.500	P822		73948	T3	13.750	14.250	22.125†	7.875	P593 P802	
73209	T2	16.625	17.375	24.250†	6.875	P1179		73949	T3	17.375	17.875	24.250†	6.375	P596	
73210	T3	13.625	14.375	20.625†	6.250	P426 P822		73950	T4	16.000	16.500	24.125†	7.625	P426	
73213	T4	16.750	18.750	25.500†	6.750	P853 P1179		73951	T4	15.750	16.250	23.625†	7.375	P821	
73214	T3	15.625	16.250	23.500	7.250	P426 P822		73952	T3	15.125	15.625	21.125†	5.500	P804	
73216	T4	17.000	17.500	24.625†	7.125	P596		73953	T3	16.875	17.375	23.000†	5.625	P804	
73223	T3	17.625	18.375	26.625†	8.250	P989		73958	SPEC	14.875	15.375	21.500†	6.125	P809	
73224	T3	13.375	13.750	19.750†	6.000	P822		73959	SPEC	18.250	18.750	25.125†	6.375	P809	
73226	T3	16.500	17.000	24.750†	7.750	P804		73962	T3	16.250	16.750	23.625†	6.875	P596	
73229	T3	14.000	14.500	20.625†	6.125	P822		73963	T3	15.750	15.000	23.875†	8.875	P822	
73230	T3	14.250	15.000	21.845†	6.845	P868		73971	T3	17.000	17.375	24.500†	7.125	None	
73232	T3	13.625	14.125	19.625†	5.500	P582 P1168		73976	T3	14.250	14.750	22.125†	7.375	P1178	
73237	T3	12.625	13.250	19.000†	5.750	P873		73991	T3	15.250	15.750	23.250†	7.500	P873	
73238	T3	13.500	14.250	21.125†	6.875	P821 P822		73995	T4	13.125	13.875	20.875†	7.000	P873	
73242	T3	14.000	14.375	20.125†	5.750	P822		73996	T3	14.750	16.000	23.875†	7.875	P873	
73244	T3	13.000	14.000	19.250†	5.250	P873		73998	T4	17.500	18.000	25.500	7.500	P596	
73245	T3	16.750	17.000	25.000†	8.000	P804									

† Bumper Stop Unit. Dimension shown at Bumper Contact.
‡ Hydraulic Lockout Unit. Dimension shown at Lockout Contact.

Product Specifications Subject to Change Without Notice.

SHOCKS

LOAD ADJUSTING SHOCKS

AIR SHOCKS

CARTRIDGES

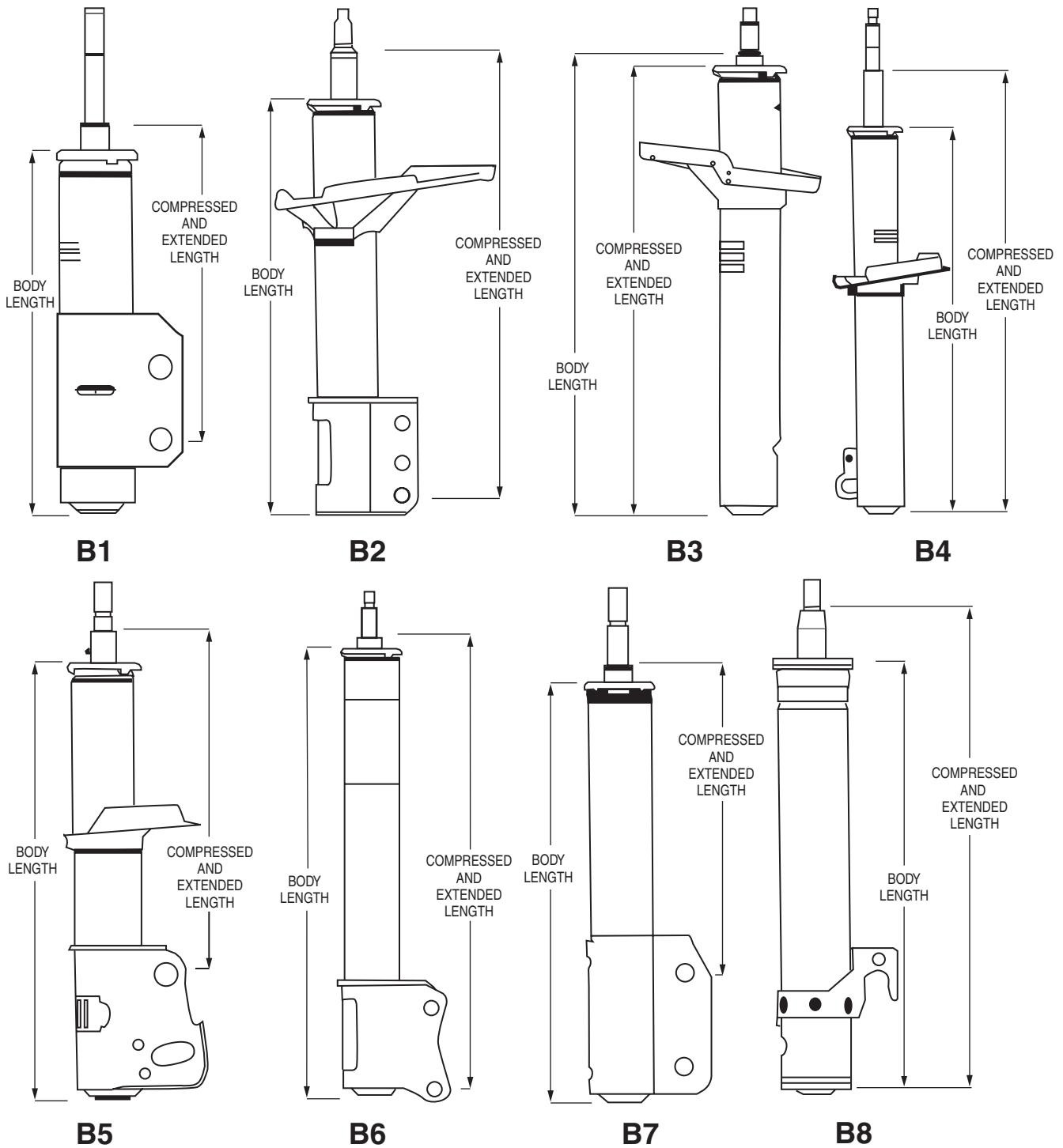
STRUTS

LIFT SUPPORTS

MOUNTING & LENGTH CHARTS REPLACEMENT UNITS

MONTAGE ET LONGUEUR DES UNITÉS DE REMPLACEMENT

TABLAS DE MONTAJE Y LONGITUD DE LAS UNIDADES DE REPUESTO



BODY LENGTH / LONGUEUR DU CORP / LONGITUD DEL CUERPO.

COMPRESSED AND EXTENDED LENGTH / LONGUEUR COMPRIMÉE ET ÉTENDUE / LONGITUD COMPRIMIDA Y EXTENDIDA.

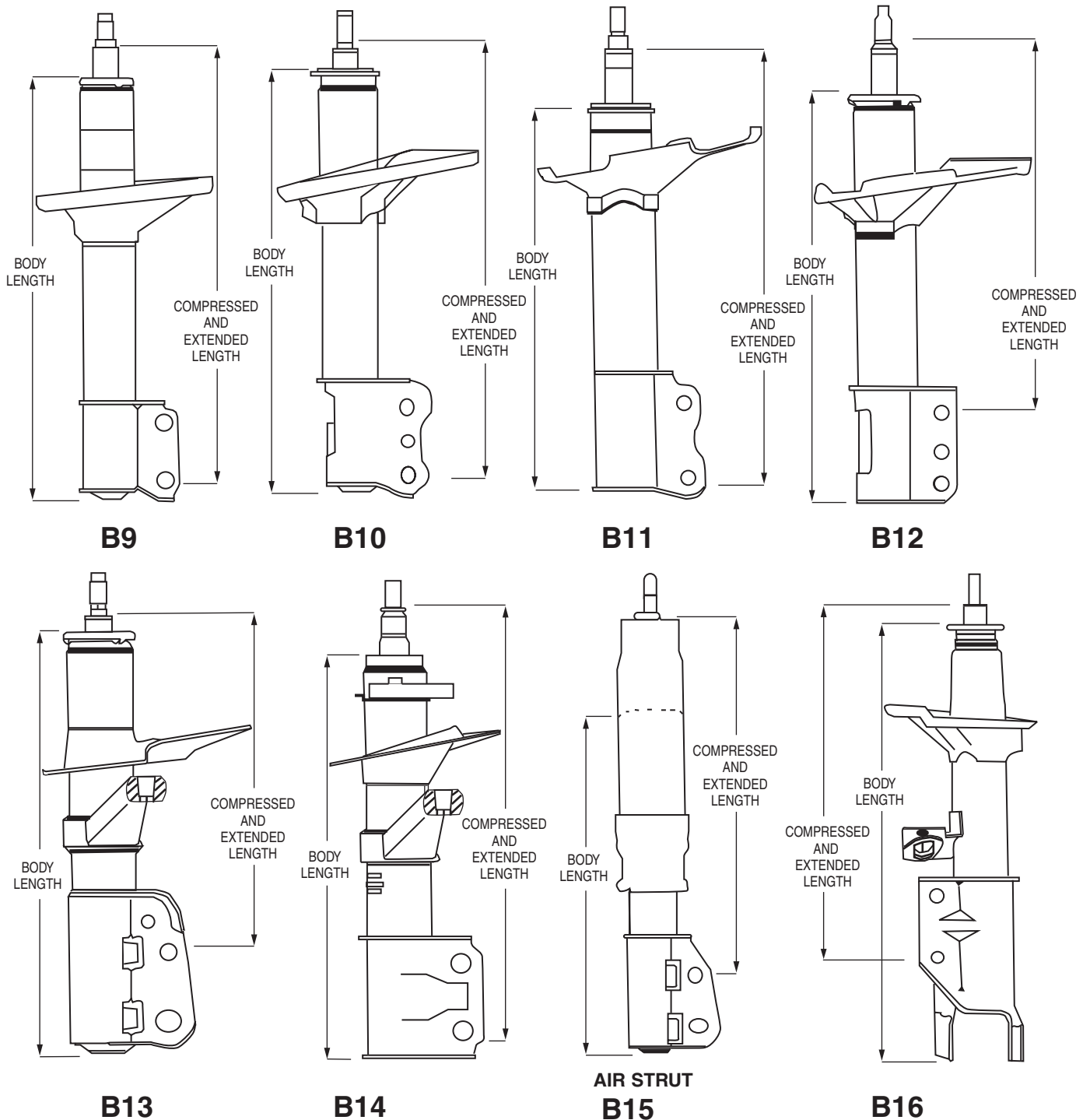
NOTE/NOTA:

All Piston Rod Ends are Designed Special For Each Application.

Chaque extrémité de tige de piston est conçue spécialement pour chaque application.

Todos los extremos de la varas del pistón están diseñadas especialmente para cada aplicación.

MOUNTING & LENGTH CHARTS REPLACEMENT UNITS MONTAGE ET LONGUEUR DES UNITÉS DE REMPLACEMENT TABLAS DE MONTAJE Y LONGITUD DE LAS UNIDADES DE REPUESTO



BODY LENGTH / LONGUEUR DU CORP / LONGITUD DEL CUERPO.

COMPRESSED AND EXTENDED LENGTH / LONGUEUR COMPRIMÉE ET ÉTENDUE / LONGITUD COMPRIMIDA Y EXTENDIDA.

NOTE/NOTA:

All Piston Rod Ends are Designed Special For Each Application.

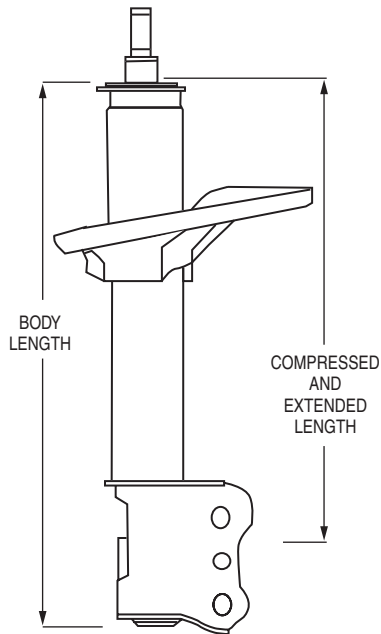
Chaque extrémité de tige de piston est conçue spécialement pour chaque application.

Todos los extremos de la varas del pistón están diseñadas especialmente para cada aplicación.

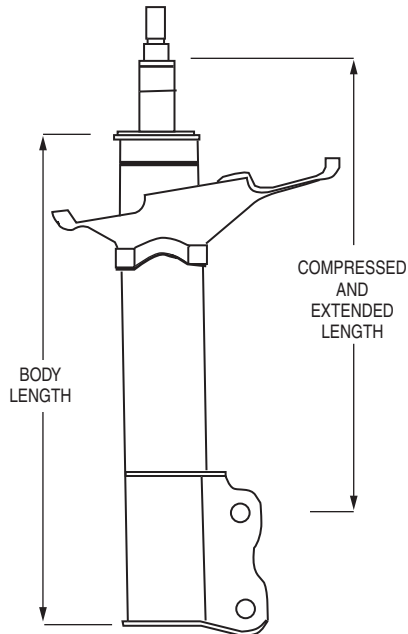
MOUNTING & LENGTH CHARTS REPLACEMENT UNITS

MONTAGE ET LONGUEUR DES UNITÉS DE REMPLACEMENT

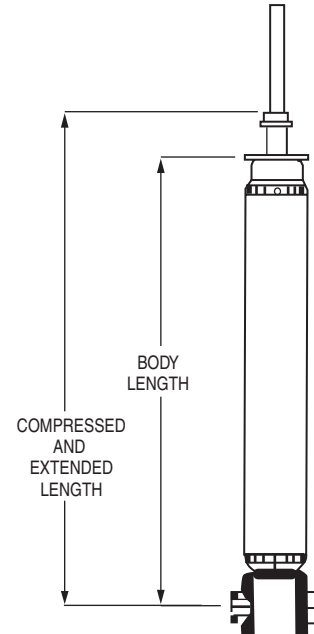
TABLAS DE MONTAJE Y LONGITUD DE LAS UNIDADES DE REPUESTO



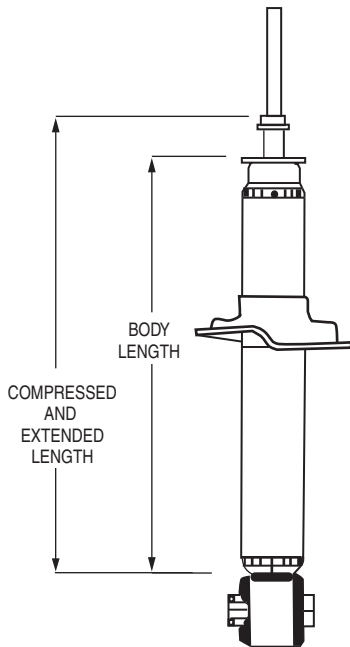
B17



B18

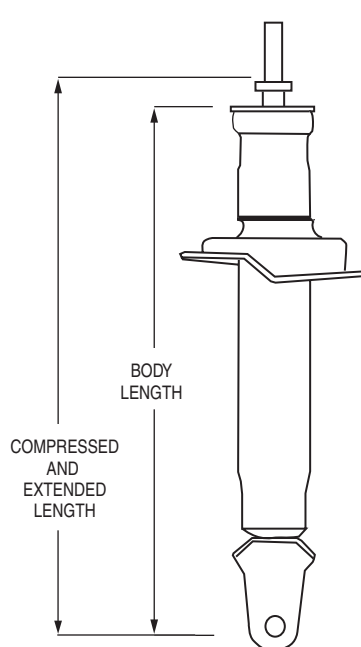


SS1



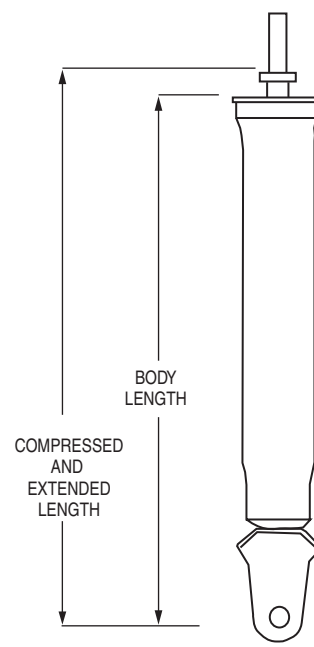
SS2

SS3 w/Dirt Shield Not Shown



SS4

SS5 w/Dirt Shield Not Shown



SS6

BODY LENGTH / LONGUEUR DU CORP / LONGITUD DEL CUERPO.

COMPRESSED AND EXTENDED LENGTH / LONGUEUR COMPRIMÉE ET ÉTENDUE / LONGITUD COMPRIMIDA Y EXTENDIDA.

NOTE/NOTA:

All Piston Rod Ends are Designed Special For Each Application.

Chaque extrémité de tige de piston est conçue spécialement pour chaque application.

Todos los extremos de la varas del pistón están diseñadas especialmente para cada aplicación.

MOUNTING & LENGTH CHARTS—STRUTS

PART NO.	STRUT BODY Type	Length	LENGTHS Comp.		Ext.	Trav.	PARTS PACK	PART NO.	STRUT BODY Type	Length	LENGTHS Comp.		Ext.	Trav.	PARTS PACK
SPECIALTY STRUTS								SENSA-TRAC® STRUTS — Continued							
30136	B4	14.500	14.750	19.625	4.875	None		71254	SS2	11.750	12.125	17.500†	5.375		P866
30138	B4	15.875	15.750	24.250	8.500	None		71255	SS4	16.625	16.750	23.750†	7.000		P866
40016		9.750	13.750	17.000	3.250	None		71256	SS1	12.000	12.250	19.000†	6.750		P762
40017		9.750	13.750	17.000	3.250	None		71257	SS4	15.750	16.000	24.125†	8.125		P905
40019		9.750	13.750	17.000	3.250	None		71259	SPEC	12.000	16.000	25.625	9.625		P1249
40020		9.750	13.750	17.000	3.250	None		71260	SS5	11.625	14.750	20.500†	5.750		P878
40021		15.625	15.875	18.750	2.875	None		71263	SS2	13.000	13.250	19.750†	6.500		P866
40022		15.625	15.875	18.750	2.875	None		71265	SS1	16.125	16.500	25.000†	8.500		P1006
40027		15.625	15.875	17.875	2.000	None		71266	SS5	13.125	13.250	19.375†	6.125		P878
40028		15.625	15.875	17.875	2.000	None		71267	SS4	17.750	17.750	25.250†	7.500		P1249
SENSA-TRAC® STRUTS								71268	SS1	10.500	10.625	16.750†	6.125		P942
71100	SS4	13.000	13.560	18.390	4.520	None		71272	SS2	13.500	13.625	20.375†	6.750	17110142	
71102	SS2	10.990	10.990	15.560	4.010	P01167		71273	SS2	13.625	14.250	21.375†	7.125	17110142	
71103	SS2	10.990	10.990	15.560	4.010	P01167		71275	SS2	14.250	14.500	21.875†	7.375	17110300	
71105	SS2	11.496	12.519	16.437	3.918	P762		71276	SS2	14.625	15.000	21.000†	6.000	None	
71106	SS2	11.496	12.519	16.437	3.918	P762		71277	SS2	14.250	14.625	21.625	7.000	None	
71109	SS2	14.450	10.490	19.490	9.000	None		71278	SS2	11.000	11.125	16.625†	5.500	None	
71110	SS2	14.453	14.591	19.488	4.897	None		71281	SS2	17.125	17.375	23.750†	6.375	None	
71111	SS6	14.840	15.340	21.500	5.850	None		71282	SS4	12.750	13.500	20.750†	7.250	None	
71114	SS2	10.000	10.550	15.040	4.490	None		71283	SS2	14.000	14.500	2.000†	7.500	17110242	
71202	SS1	12.625	13.250	21.500†	8.250	P1006		71285	SS1	13.125	13.375	18.125†	4.750	P942	
71204	SS1	11.750	12.250	19.500†	7.250	P942		71286	SS4	16.125	16.250	24.250†	8.000	P866	
71205	SS1	11.750	13.125	20.375†	7.250	P942		71289	SS2	13.000	13.250	20.125†	6.875	P866	
71206	SS2	13.375	14.000	21.375†	7.375	17110149		71290	SS1	14.375	15.125	18.750†	3.625	P1261	
71207	SS1	14.000	14.250	22.500†	8.250	P823		71291	SPEC	12.000	10.000	15.375†	5.375	17110252	
71208	SS1	14.375	14.500	23.125†	8.625	P942		71292	SPEC	13.500	13.250	19.250†	6.000	17110276	
71209	SS2	14.310	14.470	21.770	7.320	None		71293	SPEC	13.750	12.375	17.750†	5.375	17110273	
71210	SS2	14.500	17.375†	21.570†	4.375	None		71294	SPEC	12.875	12.375	19.000†	6.625	17110283	
71211	SS2	12.000	12.375	20.125	7.750	None		71295	SPEC	16.000	16.000	24.500†	8.500	P906	
71212	SS1	11.750	13.125	20.375†	7.250	None		71296	SS2	14.250	14.500	21.250†	6.750	111900003	
71214	SS1	14.625	15.625	20.500†	4.875	None		71297	SPEC	12.875	12.000	19.250†	7.250	17110283	
71215	SS1	13.125	13.625	21.500†	7.875	None		71299	SS2	16.375	16.500	25.250†	8.750	17110252	
71216	SS2	13.250	14.250	21.250†	7.000	None		71302	SS7	12.375	17.375†	19.625†	2.250	None	
71217	SS1	13.125	14.500†	22.000†	7.500	None		71303	SS4	17.125	18.125	22.125†	4.000	17110455	
71218	SS3	12.250	15.625†	19.125†	3.500	None		71304	SS4	17.000	18.125	22.000	3.875	17110455	
71219	SS3	13.000	15.375†	19.750†	4.375	None		71305	SS4	17.625	18.125	21.875†	3.750	17110455	
71220	SS1	13.500	14.125	21.750†	7.625	None		71306	SPEC	13.875	13.375	19.625†	6.250	17110316	
71221	SS2	14.375	15.000	23.375†	8.375	P840		71307	SS2	12.875	13.125	20.625†	7.500	17110149	
71222	SS1	10.875	11.250	17.250†	6.000	P942		71308	SS2	15.125	15.875	23.625	7.750	17110447	
71223	SS1	10.875	11.250	17.375†	6.125	P942		71309	SS2	14.625	15.125	23.250†	8.125	17110467	
71225	SS2	15.125	15.625	23.375†	7.750	P255		71311	SS4	12.625	13.375	20.375†	7.000	None	
71227	SS4	15.375	15.500	22.125†	6.625	P878		71312	SS2	11.000	11.500	16.500†	5.000	None	
71228	SS2	12.625	12.750	18.570†	6.000	P905		71313	SS2	14.000	14.500	21.500†	7.000	17110505	
71229	SS5	17.000	18.125†	25.500†	7.375	P904		71316	SS4	16.375	16.500	24.500†	8.000	P878	
71230	SS1	13.000	13.125	21.375†	8.250	P919		71317	SS2	14.750	15.750	20.750	5.000	P762	
71231	SS4	13.125	13.250	19.375†	6.125	P905		71318	SS2	16.500	17.375	25.250	7.875	P762	
71232	SS2	12.125	12.375	18.625†	6.250	P905		71319	SS2	13.250	13.500	21.500	8.000	None	
71233	SS2	14.750	15.125	21.500†	6.375	P947		71322	SS2	13.020	13.520	19.690	5.870	P01365	
71234	SS2	16.750	17.000	24.250†	7.250	P866		71323	SS2	14.875	15.000	22.500	7.500	P906	
71235	SS2	13.750	14.000	21.125	7.125	P866		71325	SS2	15.375	15.500	22.750	7.250	None	
71236	SS2	14.000	14.500	22.625†	8.125	17110242		71326	SS2	15.375	15.750	22.375	6.625	P906	
71237	SPEC	14.250	14.625	24.000†	9.375	P988		71327	SS2	12.250	12.875	17.625	4.750	None	
71238	SS4	12.625	12.875	19.125†	6.250	P905		71328	SS4	17.125	18.125	22.000†	3.875	17110455	
71239	SS2	15.125	15.500	23.750	8.250	17110033		71329	SS2	15.500	17.125	25.125	8.000	None	
71241	SS4	15.750	16.000	24.125†	8.125	P905		71330	SS7	12.375	17.375†	19.375†	2.000	None	
71242	SS2	12.060	12.480	19.500	7.020	None		71331	SS4	17.625	19.000	24.500	5.500	None	
71243	SS2	14.000	14.875	22.750	7.875	P866		71332	SS1	14.250	15.625	23.500	7.875	17110497	
71245	SS1	9.750	10.000†	15.000†	5.000	P942		71333	SS4	17.125	18.125	22.000†	3.875	17110455	
71246	SS1	11.125	12.000	17.750†	5.750	P762		71334	SS2	13.000	13.750	18.625†	4.875	17110616	
71247	SS6	15.000	15.250	21.375†	6.125	P942		71335	SS4	17.125	18.125	22.000†	3.875	17110683	
71252	SS2	12.625	13.000	20.125†	7.125	17110033		71337	SS2	18.625	19.250	26.625	7.375	None	
71253	SS2	14.000	14.500	22.625†	8.125	17110242		71339	SS2	16.375	16.625	25.375	8.750	None	

† Bumper Stop Unit. Dimension shown at Bumper Contact.

‡ Hydraulic Lockout Unit. Dimension shown at Lockout Contact.

Product Specifications Subject to Change Without Notice.

SHOCKS

LOAD ADJUSTING SHOCKS

AIR SHOCKS

CARTRIDGES

STRUTS

LIFT SUPPORTS

MOUNTING & LENGTH CHARTS—STRUTS

PART NO.	STRUT BODY Type	Length	LENGTHS Comp.	Ext.	Trav.	PARTS PACK	PART NO.	STRUT BODY Type	Length	LENGTHS Comp.	Ext.	Trav.	PARTS PACK
SENSA-TRAC® STRUTS — Continued							SENSA-TRAC® STRUTS — Continued						
71340	SS2	10.000	10.375	14.750	4.375	P906	71425	B2	12.750	13.000	20.125†	7.125	17110619
71341	B3	11.500	11.750	16.000†	4.250	None	71426	B10	13.375	13.625	20.500†	6.875	P762
71342	SS2	13.500	13.500	18.250	4.750	None	71427	B10	13.375	13.625	20.500†	6.875	P762
71343	SS2	9.750	9.875	14.500	4.625	None	71428	B2	14.000	13.750	20.875†	7.125	17110624
71344	SS2	17.500	17.750	20.375	2.625	None	71429	B10	13.000	10.375	17.375	7.000	None
71345	SS2	12.625	13.125	17.375	4.250	None	71430	B10	13.000	10.375	17.375	7.000	None
71346	SS3	12.250	12.250	15.375†	3.125	P1365	71431	B3	13.500	11.625	17.000	5.375	None
71347	SS3	13.625	13.625	17.875†	4.250	P1365	71433	B14	12.750	13.000	19.125	6.125	P762
71348	SS3	13.250	13.500	17.125	3.625	P1167	71434	B14	12.750	13.000	19.125	6.125	P762
71349	SS2	14.875	15.500	23.250	7.750	None	71435	B11	16.000	16.375	23.000	6.625	P762
71350	SS1	13.375	13.750	16.250	2.500	None	71436	B11	16.000	16.375	23.000	6.625	P762
71351	SS3	13.250	13.500	18.250	4.750	P1167	71437	B11	15.375	15.125	21.750	6.625	None
71352	SS3	13.375	13.625	18.250	4.625	P1167	71438	B11	15.375	15.125	21.750	6.625	None
71353	SS2	15.880	11.040	16.110	4.770	P1167	71439	B11	16.750	18.000	25.375	7.375	None
71354	SS2	9.750	10.375	13.125	2.750	P762	71440	B11	16.750	18.000	25.375	7.375	None
71355	SS2	14.500	15.500	19.750	4.250	None	71441	B10	15.750	16.000	22.625	6.625	P762
71356	SS2	13.875	14.375	21.000	6.625	17110307	71442	B10	15.750	16.000	22.625	6.625	P762
71357	SS2	12.850	12.920	18.690	5.770	None	71443	B9	13.875	14.125	20.750	6.625	17110427
71358	SS2	15.040	10.990	15.380	3.830	P01365	71444	B9	13.875	14.125	20.750	6.625	17110427
71359	SS2	10.875	11.625	16.250	4.625	None	71445	B2	16.375	15.375	23.125	7.750	P762
71360	SS2	16.000	16.125	23.500	7.375	None	71446	B2	16.375	15.375	23.125	7.750	P762
71361	SS6	21.670	17.330	21.940	4.300	P01388	71447	B9	13.875	14.125	20.750	6.625	17110427
71363	SS2	11.000	11.750	16.000	4.250	P762	71448	B9	13.875	14.125	20.750	6.625	17110427
71364	B3	12.000	12.375	17.750	5.375	P906	71451	B17	17.000	14.500	21.750	7.250	P762
71366	SS2	17.625	17.875	21.625	3.750	None	71452	B17	17.000	14.500	27.750	13.250	P762
71367	SS2	13.250	13.500	18.000	4.500	None	71453	B9	11.875	15.500	22.750	7.250	P808
71368	SS2	17.250	17.750	20.375	2.625	None	71454	B9	11.875	15.500	22.750	7.250	P808
71369	SS1	19.750	16.140	21.050	3.610	P01388	71455	B3	10.000	10.250	15.500	5.250	17110666
71370	SS1	21.220	14.260	21.500	6.920	P01388	71456	B3	10.000	10.250	15.500	5.250	17110666
71371	SS2	22.050	16.890	22.390	4.940	P01167	71457	B3	9.625	14.875	9.875	5.000	17110666
71372	SS2	17.626	17.750	21.625	3.875	P906	71458	B3	9.625	14.875	9.875	5.000	17110666
71373	SS2	11.000	11.500	16.500	5.000	None	71459	B11	16.750	18.000	25.375	7.375	None
71375	SS5	11.875	12.125	16.875	4.750	None	71460	B11	16.750	18.000	25.375	7.375	None
71377	B4	13.570	14.070	20.320	6.250	None	71461	B11	14.125	14.375	21.125	6.750	None
71379	SS2	9.125	11.125	17.375	6.250	None	71462	B11	14.125	14.375	21.125	6.750	None
71381	SS2	10.125	12.125	17.000	4.875	None	71463	B9	15.000	15.250	21.625	6.375	17110427
71382	B16	14.250	16.250	24.500	8.250	None	71464	B9	15.000	15.250	21.625	6.375	17110427
71383	B16	14.250	16.250	24.500	8.250	None	71465	B9	13.750	13.750	20.500	6.750	17110427
71389	SS2	16.375	17.375	22.000	4.625	None	71466	B9	13.750	13.750	20.500	6.750	17110427
71390	SS2	17.375	17.375	22.125	4.750	None	71467	B2	12.625	12.625	18.375†	5.750	17130042
71398	SS2	19.180	16.660	20.840	2.520	P01365	71468	B2	12.625	12.625	18.375†	5.750	17130042
71400	B10	12.625	1.625	18.750	17.125	P762	71469	B4	14.500	15.250	22.000	6.750	17110606
71401	B10	12.625	12.625	18.750	6.125	P762	71470	SPEC	16.750	17.000	21.500	4.500	17110433
71404	B10	13.000	13.375	19.625	6.250	P762	71471	SPEC	16.750	17.000	21.500	4.500	17110433
71405	B10	13.000	13.375	19.625	6.250	P762	71472	B9	13.750	14.000	20.500	6.500	17110546
71406	B10	14.000	14.375	22.125	7.750	P762	71473	B9	15.250	15.750	23.250	7.500	17110546
71407	B10	14.000	14.375	22.125	7.750	P762	71474	B9	15.250	15.750	23.250	7.500	17110546
71410	B2	17.500	17.500	25.125	7.625	P762	71475	B9	14.500	14.250	19.875	5.625	17110422
71411	B2	17.500	17.500	25.125	7.625	P762	71476	B9	14.500	14.250	19.875	5.625	17110422
71412	B9	15.250	15.375	21.625	6.250	17110427	71477	B9	14.250	14.375	21.750	7.375	17130036
71413	B9	15.250	15.375	21.625	6.250	17110427	71478	B9	14.250	14.375	21.750	7.375	17130036
71414	B2	17.875	17.500	25.500	8.000	P762	71479	B13	14.370	14.370	20.472	6.102	None
71415	B2	17.875	17.500	25.500	8.000	P762	71480	B13	14.055	14.370	20.472	6.102	None
71416	B10	14.875	14.750	22.500†	7.750	P808	71481	B9	15.630	15.945	23.622	7.677	None
71417	B3	11.625	12.000	16.750	4.750	P762	71482	B9	15.630	15.945	23.622	7.677	None
71418	B10	14.000	14.375	21.125	6.750	None	71483	B9	12.625	13.625	20.000	6.375	17110461
71419	B10	14.000	14.375	21.125	6.750	None	71484	B9	13.625	13.625	20.000	6.375	17110461
71420	B2	12.625	12.625	18.375†	5.750	17130042	71485	B11	14.125	14.125	20.750	6.625	17110535
71421	B2	12.625	12.625	18.375†	5.750	17130042	71486	SPEC	16.125	16.125	20.250	4.125	17110693
71422	B2	14.375	14.125	21.875†	7.750	17130042	71488	SPEC	16.125	16.125	19.500	3.375	17110693
71423	B2	14.375	14.125	21.875†	7.750	17130042	71490	B11	14.375	14.500	21.750	7.250	None
71424	B2	12.750	13.000	20.125†	7.125	17110619	71491	B11	14.375	14.500	21.750	7.250	None

† Bumper Stop Unit. Dimension shown at Bumper Contact.

‡ Hydraulic Lockout Unit. Dimension shown at Lockout Contact.

MOUNTING & LENGTH CHARTS—STRUTS

PART NO.	STRUT BODY Type	LENGTHS Length	Comp.	Ext.	Trav.	PARTS PACK	PART NO.	STRUT BODY Type	LENGTHS Length	Comp.	Ext.	Trav.	PARTS PACK
SENSA-TRAC® STRUTS — Continued							SENSA-TRAC® STRUTS — Continued						
71492	B11	16.250	16.000	24.500	8.500	None	71566	B11	12.625	12.875	18.750†	5.875	P839
71493	B11	16.250	16.000	24.500	8.500	None	71567	B11	12.625	12.875	18.750†	5.875	P839
71494	B2	16.187	15.900	21.260	5.360	None	71568	B11	13.375	14.250	20.250†	6.000	P839
71495	B2	16.187	15.900	21.260	5.360	P01458	71569	B11	13.375	14.250	20.250†	6.000	P839
71496	B2	17.040	16.710	24.350	7.640	None	71570	B10	14.875	16.625	23.375†	6.750	P762
71497	B2	17.040	16.710	24.350	7.640	None	71571	B10	14.875	16.625	23.375†	6.750	P762
71498	B2	14.600	15.260	23.300	8.040	None	71572	B5	15.500	11.500	18.500†	7.000	P590
71499	B2	14.600	15.260	23.300	8.040	None	71573	B10	15.000	16.000	22.625†	6.625	P762
71503	B2	14.875	14.500	21.750†	7.250	17110396	71574	B10	15.750	16.000	22.625†	6.625	P762
71504	B4	14.750	15.125	21.375†	6.250	17110533	71575	B10	13.750	13.375	20.500†	7.125	17110543
71505	B4	14.750	15.125	21.375†	6.250	17110533	71576	SPEC	17.000	17.250	25.375	8.125	P762
71506	B3	14.500	15.000	23.000†	8.000	17110353	71577	B4	9.375	9.625	13.875†	4.250	None
71507	B10	13.250	13.625	20.500†	6.875	17110354	71578	B2	16.250	16.500	24.375†	7.875	None
71508	B10	13.250	13.625	20.500†	6.875	17110354	71579	B2	16.250	16.500	24.375†	7.875	None
71509	SPEC	16.750	17.000	22.250†	5.250	17110434	71580	B5	13.750	12.000	18.000†	6.000	None
71510	SPEC	16.750	17.000	22.250†	5.250	17110434	71581	B3	14.625	15.000	19.500†	4.500	17110432
71511	SPEC	16.750	17.000	22.250†	5.250	17110434	71582	B3	14.750	15.000	19.500	4.500	17110432
71512	SPEC	16.750	17.000	22.250†	5.250	17110434	71583	B3	13.375	13.375	18.000†	4.625	17110252
71513	SPEC	16.750	17.000	22.250†	5.250	17110432	71584	B10	13.875	14.000	22.500†	8.500	17130036
71514	SPEC	16.750	17.000	22.250	5.250	17110432	71585	B10	13.875	14.000	22.250†	8.250	17130036
71515	SPEC	16.750	17.000	22.250†	5.250	17110433	71586	B2	12.750	13.000	20.000†	7.000	17110619
71516	SPEC	16.750	17.000	22.250†	5.250	17110433	71587	B2	12.750	13.000	20.000†	7.000	17110619
71517	B10	14.500	14.250	20.625†	6.375	17130037	71588	B11	14.875	15.000	23.375†	8.375	17110678
71518	B10	14.500	14.250	20.625†	6.375	17130037	71589	B9	15.000	15.000	23.375	8.375	P762
71519	B10	14.500	14.500	20.875†	6.375	17130024	71590	B7	12.250	8.750	15.250†	6.500	P808
71520	B10	14.500	14.375	20.875†	6.500	17130024	71591	B7	12.250	8.750	15.250†	6.500	P808
71521	SPEC	16.750	17.000	21.625†	4.625	17110433	71592	B5	13.750	12.000	18.000†	6.000	None
71522	SPEC	16.750	17.000	21.625†	4.625	17110433	71593	B11	16.875	17.750	25.000	7.250	P1371
71523	SPEC	16.750	17.000	21.625†	4.625	17110434	71594	B11	16.875	17.750	25.000	7.250	P1371
71524	SPEC	16.750	17.000	21.625†	4.625	17110434	71595	B10	13.125	13.125	19.125†	6.000	None
71525	B4	14.500	15.250	22.000†	6.750	17110658	71596	B10	13.125	13.125	19.125†	6.000	None
71526	B4	17.000	17.125	22.250†	5.125	17110448	71597	B9	14.250	14.500	21.000	6.500	P1450
71527	B4	17.000	17.125	22.250†	5.125	17110448	71598	B9	14.250	14.500	21.000	6.500	P762
71528	SPEC	16.750	17.000	22.000†	5.000	17110443	71599	B3	11.625	12.000	16.750	4.750	P762
71529	SPEC	16.750	17.000	22.000†	5.000	17110443	71600	B11	13.750	13.750	20.500†	6.750	P839
71530	B3	13.000	13.125	18.250†	5.125	P906	71601	B11	13.750	13.750	20.500†	6.750	P839
71536	SPEC	12.875	14.375	21.375	7.000	P906	71602	B2	16.750	16.500	24.500	8.000	P762 P1300
71537	SPEC	14.000	14.750	21.250†	6.500	P906	71603	B2	16.750	16.500	24.500	8.000	P762 P1300
71538	SPEC	15.125	16.500	21.125†	4.625	P762	71604	B5	16.500	14.125	22.250	8.125	P839
71539	SPEC	15.750	13.500	23.125	9.625	P762	71605	B5	16.500	14.125	22.250	8.125	P839
71540	SPEC	16.875	11.750	18.375†	6.625	17130024	71606	B2	16.125	15.625	24.250	8.625	P762
71541	SPEC	16.875	11.750	18.375†	6.625	17130024	71607	B2	16.125	15.625	24.250	8.625	P762
71545	B2	13.500	12.250	19.125†	6.875	17130026	71608	B2	16.375	15.375	23.125†	7.750	P762
71546	B2	13.500	12.250	19.125†	6.875	17130026	71609	B2	16.375	15.375	23.125†	7.750	P762
71547	B2	14.500	14.125	22.125†	8.000	17130024	71610	B2	16.750	17.125	25.500†	8.375	P762
71548	B2	14.500	14.125	22.125†	8.000	17130024	71611	B2	16.750	17.125	25.500†	8.375	P762
71549	B10	13.000	13.000	19.000†	6.000	17130036	71612	B2	16.375	15.500	24.000†	8.500	P762
71550	B10	13.000	13.000	19.000†	6.000	17130036	71613	B2	16.375	15.500	24.000†	8.500	P762
71551	B11	13.625	13.750	21.125†	7.375	17130036	71615	B4	14.750	14.875	19.000†	4.125	P590
71552	B11	13.625	13.750	21.125†	7.375	17130036	71616	B4	15.875	16.000	21.875†	5.875	P590
71553	B10	13.000	12.625	18.750†	6.125	17130021	71617	B13	13.875	11.375	17.625†	6.250	P588
71554	B10	13.000	12.625	18.750†	6.125	17130021	71618	B13	13.875	11.375	17.625†	6.250	P588
71555	B11	14.375	14.750	20.625†	5.875	17110478	71619	B9	18.000	18.250	26.375†	8.125	P762
71556	B11	14.375	14.750	20.625†	5.875	17110478	71620	B9	18.000	18.250	26.375†	8.125	P762
71557	B2	13.500	13.500	19.875†	6.375	17110437	71628	B10	12.250	12.250	18.000†	5.750	P808
71558	B2	13.500	13.500	19.875†	6.375	17110437	71629	B10	12.250	12.250	18.000†	5.750	P808
71559	B2	16.500	16.000	23.500†	7.500	17130024	71631	B2	15.500	15.375	21.500†	6.125	P808
71560	B2	16.500	16.000	23.500†	7.500	17130024	71632	B5	14.500	11.500	18.500†	7.000	P853
71561	SPEC	9.500	10.000	14.625†	4.625	17110469	71636	B2	14.000	14.125	20.500†	6.375	17110288
71562	SPEC	9.250	8.500	13.375†	4.875	P906	71637	B2	14.000	14.125	20.500†	6.375	17110288
71563	SPEC	9.250	8.500	13.375†	4.875	P906	71638	B2	12.750	12.500	18.875†	6.375	17130021
71565	B3	9.500	10.000	13.375†	3.375	P1095	71639	B2	12.750	12.500	18.875†	6.375	17130021

† Bumper Stop Unit. Dimension shown at Bumper Contact.
‡ Hydraulic Lockout Unit. Dimension shown at Lockout Contact.

Product Specifications Subject to Change Without Notice.

SHOCKS

LOAD ADJUSTING SHOCKS

AIR SHOCKS

CARTRIDGES

STRUTS

LIFT SUPPORTS

MOUNTING & LENGTH CHARTS—STRUTS

PART NO.	STRUT BODY Type	Length	LENGTHS Comp.	Ext.	Trav.	PARTS PACK	PART NO.	STRUT BODY Type	Length	LENGTHS Comp.	Ext.	Trav.	PARTS PACK
SENSA-TRAC® STRUTS — Continued							SENSA-TRAC® STRUTS — Continued						
71640	B2	13.000	12.500	18.875	6.375	17130021	71738	B5	15.625	13.375	19.125†	5.750	P588
71641	B2	13.000	12.500	18.875	6.375	17130021	71748	B11	13.625	14.250	20.625†	6.375	None
71642	SPEC	13.125	13.875	21.250†	7.375	17110307	71749	B11	13.625	14.250	20.625†	6.375	None
71644	B2	12.875	12.625	18.500	5.875	17130036	71750	B4	14.375	15.125	21.000†	5.875	P858
71645	B2	12.875	12.625	18.500	5.875	17130036	71751	B10	15.750	16.250	24.250†	8.000	P858
71646	B2	13.000	14.250	22.000†	7.750	17130036	71752	B4	14.375	15.125	21.000†	5.875	P858
71647	B2	13.000	14.250	22.000†	7.750	17130036	71756	B1	15.875	13.500	20.625†	7.125	P869
71648	B2	13.500	13.000	19.125†	6.125	17130036	71757	B4	10.760	11.260	17.421	6.161	None
71649	B2	13.500	13.000	19.125†	6.125	17130036	71758	B4	14.375	14.250	19.625	5.375	P766
71650	B2	14.375	13.625	21.500†	7.875	17130036	71759	B4	14.375	15.125	21.000†	5.875	P858
71651	B2	14.375	13.625	21.500†	7.875	17130036	71760	B11	14.500	15.375	22.500†	7.125	None
71652	B2	13.000	12.875	18.875†	6.000	17110482	71761	B2	13.250	13.500	20.250†	6.750	P928
71653	B2	13.000	12.875	18.875†	6.000	17110482	71762	B2	14.500	14.875	22.250†	7.375	None
71654	B2	13.000	12.875	18.875†	6.000	17110481	71767	B9	13.625	13.875	20.000†	6.125	P588
71655	B2	13.000	12.875	18.875†	6.000	17110481	71770	B5	14.125	11.625	17.625†	6.000	P588
71656	SPEC	12.750	13.750	20.500†	6.750	17130021	71771	B5	14.000	10.250	16.875†	6.625	P590
71657	SPEC	12.750	13.750	20.500†	6.750	17130021	71772	B9	14.170	15.000	22.640	7.640	None
71660	B10	14.875	14.500	22.375†	7.875	P808	71773	B9	14.170	15.000	22.640	7.640	None
71661	B5	13.750	10.250	16.625†	6.375	P588	71774	B2	13.625	13.250	19.500	6.250	None
71662	B2	16.625	15.500	23.125†	7.625	P588	71775	B2	13.875	13.375	19.500	6.125	None
71663	B2	16.625	15.500	23.125†	7.625	P853	71776	B2	13.875	13.375	19.500	6.125	None
71664	B5	14.250	11.000	18.500†	7.500	P853	71779	B4	14.375	15.125	21.000†	5.875	P858
71665	B5	14.500	10.375	17.500†	7.125	P853	71780	B4	14.625	14.750	21.125†	6.375	P590
71667	B13	14.625	11.125	17.375†	6.250	P1030	71781	B4	15.875	15.875	24.250†	8.375	P590
71668	B13	14.625	11.125	17.375†	6.250	P1030	71785	B3	14.375	14.500	20.625	6.125	P839
71669	B3	17.500	17.750	26.500†	8.750	P1030	71786	B3	14.375	14.500	20.625	6.125	P839
71670	B5	13.750	10.500	15.375†	4.875	None	71789	SPEC	15.125	15.250	21.000†	5.750	P860
71671	B2	15.500	15.625	21.000†	5.375	P588	71790	SPEC	15.125	15.250	21.000†	5.750	P860
71672	B5	13.375	11.000	18.000†	7.000	None	71791	B11	12.750	13.000	19.250†	6.250	P839
71673	B19	15.500	12.875	21.250†	8.375	None	71792	B9	12.760	13.270	19.550	6.280	P839
71674	B11	13.125	13.375	18.875†	5.500	P839	71793	B12	13.250	10.250	16.625†	6.375	P838
71675	B11	13.125	13.375	18.875†	5.500	P839	71794	B5	13.000	10.250	16.375	6.125	P839
71676	B11	15.500	15.375	22.250†	6.875	P839	71795	B8	12.875	12.875	18.750†	5.875	P762
71677	B11	15.000	15.375	22.250†	6.875	P839	71796	B8	15.000	15.000	21.000	6.000	P762
71678	B10	13.750	13.875	20.125	6.250	None	71797	B5	14.375	11.500	18.500†	7.000	P853
71679	B10	13.750	13.875	20.125	6.250	None	71798	B15	16.625	13.750	21.000†	7.250	P853
71680	B10	16.500	17.000	24.250†	7.250	P808	71799	B5	16.625	13.750	21.000†	7.250	P853
71681	B10	16.500	17.000	24.250†	7.250	P808	71800	B5	14.000	10.875	17.750†	6.875	P853
71682	B10	13.625	14.375	21.625†	7.250	None	71801	SPEC	14.750	15.000	22.500†	7.500	None
71683	B10	13.625	14.375	21.625†	7.250	None	71802	B4	15.250	15.375	22.000†	6.625	P839
71684	B5	14.500	10.375	17.500†	7.125	None	71803	B1	15.625	13.625	20.125†	6.500	P869
71685	B5	14.000	10.125	16.500†	6.375	P853	71804	B2	12.750	12.500	19.000†	6.500	P859
71686	B2	15.500	12.125	20.375†	8.250	None	71805	B2	13.625	12.375	18.875†	6.500	P762
71687	B4	14.000	14.000	20.250†	6.250	P1085	71806	B10	13.219	14.417	21.051	6.634	None
71691	B3	13.625	16.625	19.500†	2.875	17110252	71807	B3	10.250	11.750†	14.000	2.250	P855
71693	B2	13.125	12.750	19.000†	6.250	17130021	71808	SPEC	17.125	17.375	24.250†	6.875	17110394
71694	B2	13.125	12.750	19.000†	6.250	17130021	71809	B13	14.250	11.000	17.750†	6.750	P588
71695	B2	14.500	14.375	23.125†	8.750	17130036	71810	B13	14.250	11.000	17.750†	6.750	P588
71696	B2	14.500	14.500	23.125†	8.625	17130036	71814	B5	13.250	9.375	16.125†	6.750	P590
71697	B3	12.500	13.000	17.625†	4.625	17110417	71815	B10	12.750	13.375	19.750†	6.375	P839
71698	B3	13.250	13.750	18.375†	4.625	17110417	71816	B10	15.250	14.000	22.875†	8.875	P839
71699	B2	15.000	14.375	20.625†	6.250	17110430	71817	B10	15.250	14.000	22.875†	8.875	P839
71708	B5	13.750	10.250	16.875†	6.625	P590	71818	B2	13.000	12.625	18.625†	6.000	P839
71715	B9	14.125	14.000	20.625†	6.625	P588	71819	B5	13.625	10.875	17.250†	6.375	P588
71716	B1	16.125	14.000	19.500†	5.500	P589	71822	B5	14.500	11.500	18.500†	7.000	P853
71718	B6	14.125	14.250	21.750†	7.500	P858	71824	B17	15.000	12.125	20.000†	7.875	P808
71722	B3	15.500	15.500	21.500	6.000	None	71825	B17	15.000	12.125	20.000†	7.875	P808
71725	B3	14.375	14.375	20.500	6.125	None	71826	B5	12.125	9.250	15.750†	6.500	P808
71726	B3	16.250	16.500	22.250	5.750	None	71827	B5	14.750	11.875	18.250†	6.375	P808
71728	B1	13.875	12.500	19.625†	7.125	None	71828	B1	15.250	13.625	20.125†	6.500	P918
71730	B16	22.125	17.750	25.625	7.875	P838	71829	B3	11.000	11.125	15.250†	4.125	P906
71737	B5	14.125	11.625	17.625†	6.000	P588	71830	B3	12.500	12.500	16.625†	4.125	P906

† Bumper Stop Unit. Dimension shown at Bumper Contact.

‡ Hydraulic Lockout Unit. Dimension shown at Lockout Contact.

MOUNTING & LENGTH CHARTS—STRUTS

PART NO.	STRUT BODY Type	LENGTHS Length	Comp.	Ext.	Trav.	PARTS PACK	PART NO.	STRUT BODY Type	LENGTHS Length	Comp.	Ext.	Trav.	PARTS PACK
SENSA-TRAC® STRUTS — Continued							SENSA-TRAC® STRUTS — Continued						
71831	B1	14.625	10.500	18.500†	8.000	AK57 P853	71905	B11	15.500	15.250	21.875†	6.625	P808
71833	B5	15.000	12.375	18.750†	6.375	P588	71910	B5	14.125	14.625	20.625	6.000	None
71834	B11	13.000	12.750	19.125†	6.375	P839	71911	B5	14.125	14.625	20.625	6.000	None
71837	B2	12.875	13.000	19.250†	6.250	P808 P928	71912	B2	15.250	15.000	21.375†	6.375	None
71838	B2	15.500	15.375	22.375†	7.000	P808	71913	B10	15.875	15.375	22.750†	7.375	P590
71839	B2	14.250	14.375	21.250†	6.875	17110377	71916	B18	13.250	11.000	16.375†	5.375	None
71840	B14	14.000	14.125	20.500†	6.375	P808	71917	B18	13.250	11.000	16.375†	5.375	None
71841	B14	14.000	14.125	20.500†	6.375	P808	71918	B2	12.500	12.250	17.875†	5.625	P839
71843	B12	14.375	11.750	18.875†	7.125	P838	71919	B2	9.625	14.000	19.875	5.875	P839
71844	B3	12.000	12.125†	16.500†	4.375	P906	71920	B4	14.625	14.750	21.125†	6.375	P590
71845	SPEC	17.500	16.375	20.500†	4.125	P858	71921	B13	13.875	11.375	17.500†	6.125	P588
71846	B2	15.125	14.500	22.625†	8.125	P808	71922	B13	13.875	11.375	17.500†	6.125	P588
71847	B2	15.125	14.500	22.625†	8.125	P808	71923	B8	15.375	16.250	24.000	7.750	P838 P941
71848	B2	12.625	10.500	16.500†	6.000	P762	71924	B17	13.000	10.250	17.000†	6.750	P590 P1328
71849	B2	12.625	10.500	16.500†	6.000	P762	71925	B17	15.125	12.625	19.625†	7.000	P590 P1328
71850	B5	14.125	11.625	19.500†	7.875	P808							P1329
71851	B2	12.500	12.375	18.000†	5.625	P839	71926	B13	14.625	11.500	17.375†	5.875	P588
71852	B8	13.375	13.375	20.250†	6.875	P839	71927	B13	14.625	11.500	17.375†	5.875	P588
71853	B9	12.375	13.500	20.500	7.000	17110397	71929	B2	12.500	11.875	18.250†	6.375	P858
71854	B5	14.000	10.875	17.750†	6.875	P853	71930	B2	14.375	14.500	22.750†	8.250	P858
71855	B5	13.500	10.875	17.250†	6.375	P588	71932	B7	8.625	8.750	15.250†	6.500	P808
71856	B3	14.500	15.000	22.875†	7.875	17110353	71933	B10	13.500	13.875	20.500	6.625	P986
71857	B11	13.750	13.125	19.125†	6.000	P808	71936	B10	14.875	14.875	21.750†	6.875	P808
71858	B11	13.750	13.125	19.125†	6.000	P808	71937	B13	14.750	11.125	17.250†	6.125	P1030
71859	B11	13.750	13.375	19.625†	6.250	P808	71938	B13	14.750	11.125	17.250†	6.125	P1030
71860	B11	13.750	13.375	19.625†	6.250	P808	71939	B3	18.875	19.000	27.500†	8.500	P1031
71861	B11	15.750	16.000	24.000†	8.000	P808	71940	B9	13.500	14.375	20.875	6.500	17110397
71862	B11	15.750	16.000	24.000†	8.000	P808	71941	B11	13.000	13.000	18.875†	5.875	P839
71863	B3	12.000	12.125	16.750†	4.625	P878	71942	B11	13.000	13.000	18.875†	5.875	P839
71865	B17	15.500	12.125	20.000†	7.875	P808	71943	B11	15.125	15.000	22.250†	7.250	P839
71866	B17	11.500	12.125	20.000†	7.875	P808	71944	B11	15.125	15.000	22.250†	7.250	P839
71867	B3	12.000	12.250	16.875†	4.625	P944	71945	B3	11.875	12.000	17.250†	5.250	P906
71868	B5	13.625	10.375	16.250†	5.875	P838	71946	B3	11.875	12.000	17.250†	5.250	P906
71869	B11	12.625	12.500	18.875†	6.375	P839	71951	B2	13.625	13.250	18.750†	5.500	P808
71870	B3	12.625	12.125†	16.625†	4.500	P906	71952	B2	13.625	13.250	18.750†	5.500	P808
71871	B11	12.875	13.375	19.625†	6.250	P839	71953	B2	15.125	15.500	22.500†	7.000	P808
71872	B11	12.875	13.375	19.625†	6.250	P839	71954	B2	15.125	15.500	22.500†	7.000	P808
71873	B10	15.375	14.875	23.125†	8.250	P839	71955	B2	13.500	15.250	19.250†	4.000	P808
71874	B10	15.375	14.875	23.125†	8.250	P839	71956	B2	13.500	15.250	19.250†	4.000	P808
71875	B3	12.125	13.500	17.750†	4.250	P906	71959	B5	12.500	10.125	15.500†	5.375	P588
71876	B3	14.875	12.875	18.625†	5.750	P839	71960	B9	14.875	14.125	19.250†	5.125	P588 P1330
71877	B11	14.000	14.000	19.750†	5.750	P762	71961	B15	16.625	13.750	21.000†	7.250	P853
71878	B2	12.500	11.875	18.375†	6.500	P858	71962	B7	16.000	12.875	18.500†	5.625	P589
71880	B2	14.375	14.500	22.750†	8.250	P858	71963	B7	16.000	12.875	18.500†	5.625	P589
71881	B11	12.125	13.000	18.875†	5.875	P839	71964	B5	15.625	13.250	19.500†	6.250	P588
71882	B11	12.125	13.000	18.875†	5.875	P839	71965	B10	15.125	15.000	22.125†	7.125	P590
71883	B11	11.378	12.480	18.150	5.670	None	71966	B8	14.250	15.000	22.000†	7.000	None
71884	B3	12.875	13.125	17.000†	3.875	P906	71968	B10	13.625	14.375	20.125†	5.750	P839
71885	B9	13.750	13.125	19.375†	6.250	P762	71969	B10	13.625	14.375	20.125†	5.750	P839
71887	B2	14.000	14.125	19.875†	5.750	P762	71970	B5	14.500	14.625	20.375†	5.750	17130024
71888	B9	13.125	12.250	18.875†	6.625	P838	71971	SPEC	17.750	18.125	24.125†	6.000	17110394
71889	B16	19.875	17.250	25.875†	8.625	P838	71972	B12	16.625	12.250	19.875†	7.625	P853
71892	B18	14.375	10.875	16.625†	5.750	P838 P1168	71973	B5	13.875	11.375	17.750†	6.375	P588
71893	B17	16.125	12.500	20.000†	7.500	P808	71974	SPEC	17.375	17.625	24.375	6.750	None
71894	B17	16.125	12.500	20.000†	7.500	P808	71975	SPEC	17.375	17.625	24.375	6.750	None
71897	SPEC	12.375	12.750	16.375†	3.625	P1095	71976	SS2	17.375	17.750	20.375†	2.625	None
71898	B11	13.000	12.625	18.750†	6.125	P808	71977	SS2	12.750	13.125	18.125†	5.000	None
71899	B11	13.000	12.625	18.750†	6.125	P808	71979	B11	13.750	13.875	20.125†	6.250	P808
71900	B11	13.750	14.250	20.250†	6.000	P839	71980	B11	13.750	13.875	20.125†	6.250	P808
71901	B11	13.750	14.250	20.250†	6.000	P839	71981	B3	13.125	14.375	18.500	4.125	P905
71902	B11	9.870	10.362	16.524†	6.162	None	71982	B3	13.125	14.375	18.500	4.125	P905
71904	B11	15.500	15.250	21.875†	6.625	P808	71983	B4	13.750	13.875	20.500†	6.625	P1086

† Bumper Stop Unit. Dimension shown at Bumper Contact.
‡ Hydraulic Lockout Unit. Dimension shown at Lockout Contact.

Product Specifications Subject to Change Without Notice.

SHOCKS

LOAD ADJUSTING SHOCKS

AIR SHOCKS

CARTRIDGES

STRUTS

LIFT SUPPORTS

MOUNTING & LENGTH CHARTS—STRUTS

PART NO.	STRUT BODY Type	Length	LENGTHS Comp.	Ext.	Trav.	PARTS PACK	PART NO.	STRUT BODY Type	Length	LENGTHS Comp.	Ext.	Trav.	PARTS PACK
SENSA-TRAC® STRUTS — Continued							SENSA-TRAC® STRUTS — Continued						
71984	B4	15.875	16.875	26.125†	9.250	P1085	72200	B11	12.625	13.750	20.500	6.750	None
71985	B4	13.500	12.500	19.125†	6.625	P1086	72201	B11	16.750	15.375	22.000	6.625	None
71986	B4	14.375	15.500	24.500	9.000	P1085	72202	B11	16.750	15.375	22.000	6.625	None
71987	B2	13.625	13.500	18.875†	5.375	P928	72203	B11	9.000	13.125	19.750	6.625	None
71989	B3	12.875	13.000	18.125†	5.125	P906	72204	B11	9.000	13.125	19.750	6.625	None
71992	B2	12.500	12.000	18.500†	6.500	None	72205	B17	14.500	14.500	21.750	7.250	None
71993	B2	12.875	11.750	17.250	5.500	None	72206	B10	13.500	15.000	21.750	6.625	None
71994	B2	14.375	14.625	22.750†	8.125	P858	72207	B11	16.000	16.000	24.500	8.500	P807
71996	B3	13.375	13.750	17.375†	3.625	17110419	72208	B9	12.000	16.375	24.500	8.125	None
71997	B3	13.375	13.750	17.375†	3.625	17110419	72209	B13	14.810	12.870	20.940	8.070	P1470
71998	B10	13.875	13.750	19.750†	6.000	17130021	72210	B13	14.810	12.870	20.940	8.070	P1470
72101	B10	16.187	15.900	20.200	4.300	P01371	72211	B17	16.082	16.950	23.720	6.770	P01418
72102	B17	16.187	15.900	20.200	4.300	P01371	72212	B17	16.082	16.950	23.720	6.770	P01418
72103	B17	18.090	17.860	26.020	8.160	None	72213	B17	17.007	17.320	24.310	6.990	P00808
72104	B17	17.240	17.860	26.020	8.160	None	72214	B17	17.007	17.320	24.310	6.990	P00808
72105	B10	12.875	12.750	18.750	6.000	P762	72215	B17	15.118	15.410	22.910	7.500	P00808
72106	B10	12.875	12.750	18.750	6.000	P762	72216	B17	15.118	15.410	22.910	7.500	P00808
72107	B10	12.875	12.750	18.750	6.000	P762	72217	B13	14.800	12.440	20.590	8.150	None
72108	B10	12.875	12.750	18.750	6.000	P762	72218	B13	14.800	12.440	20.590	8.150	None
72109	B10	14.250	14.250	19.875	5.625	None	72219	B12	14.924	15.181	21.350	6.169	P00762
72110	B10	14.250	14.250	19.875	5.625	None	72220	B12	14.924	15.181	21.350	6.169	P00762
72111	B9	12.375	12.875	19.250	6.375	P808	72221	B12	15.790	15.909	23.271	7.362	P00762
72112	B9	12.375	12.875	19.250	6.375	P808	72222	B12	15.790	15.909	23.271	7.362	P00762
72113	B2	13.750	10.250	16.625	6.375	None	72231	B13	9.770	10.270	16.680	6.410	None
72114	B9	13.500	13.875	19.625	5.750	None	72236	B11	15.800	16.540	23.820	7.280	None
72115	B9	13.500	13.875	19.625	5.750	None	72248	SS6	18.870	19.370	25.174	5.804	None
72116	B11	13.125	13.625	20.625	7.000	None	72249	SS6	18.870	19.370	25.174	5.804	None
72117	B11	13.125	13.625	20.625	7.000	None	QUICK-STRUT®						
72120	B11	13.000	14.000	19.375	5.375	P762	171241L	B4	15.250	15.750	24.090	8.340	P00878
72121	B11	13.000	14.000	19.375	5.375	P762	171241R	B4	15.250	15.750	24.090	8.340	P00878
72122	B4	13.231	13.440	20.080	6.640	P00590	171265	SS1	16.125	16.500	25.000	8.500	P1006
72123	B4	12.375	12.500	17.125	4.625	P906	171281	SS2	17.125	17.375	23.750	6.375	None
72126	B10	15.375	15.750	22.875	7.125	P808	171286L	SS4	14.260	16.300	24.290	8.000	None
72127	B10	15.375	15.750	22.875	7.125	P808	171286R	SS4	14.260	16.300	24.290	8.000	None
72130	B18	16.745	13.380	20.800	7.420	None	171293L	SS2	12.000	12.510	17.730	5.220	None
72135	B17	14.716	14.370	21.500	7.130	P01450	171293R	SS2	12.000	12.510	17.730	5.220	None
72136	B17	14.716	14.370	21.500	7.130	P01450	171504	B4	13.500	14.000	20.375	6.375	P1113
72138	B9	15.250	15.375	21.500	6.125	P590	171505	B4	13.500	14.000	20.375	6.375	P1113
72139	B9	13.000	13.375	19.375	6.000	P762	171572L	B5	15.415	12.180	18.560	6.380	None
72140	B9	13.000	13.375	19.375	6.000	P762	171572R	B5	15.415	12.180	18.560	6.380	None
72141	B9	12.250	14.250	21.000	6.750	None	171615	B4	14.750	14.875	19.000	4.125	P590
72143	B17	14.716	14.530	21.100	6.570	P01450	171616	B4	15.875	16.000	21.875	5.875	P590
72144	B17	14.716	14.530	21.100	6.570	P01450	171661	B5	13.750	10.250	16.625	6.375	P588
72147	B9	13.000	13.375	19.125	5.750	P762	171662L	B2	16.625	15.500	23.125	7.625	P588
72148	B9	13.000	13.375	19.125	5.750	P762	171662R	B2	16.625	15.500	23.125	7.625	P588
72156	B4	12.125	12.125	17.000	4.875	None	171672	B5	13.750	10.250	16.625	6.375	P588
72157	B4	12.125	12.125	17.000	4.875	None	171678	B10	13.750	13.875	20.125	6.250	None
72158	B16	14.480	14.980	21.430	6.450	None	171679	B10	13.750	13.875	20.125	6.250	None
72166	B4	11.625	11.625	15.375	3.750	None	171680	B10	16.500	17.000	24.250	7.250	P808
72167	B4	11.625	11.625	15.375	3.750	None	171681	B10	16.500	17.000	24.250	7.250	P808
72168	B4	11.625	11.625	15.375	3.750	None	171682	B11	13.650	14.250	21.640	7.390	None
72169	B4	11.625	11.625	15.375	3.750	None	171683	B11	13.650	14.250	21.640	7.390	None
72177	B9	13.750	10.325	16.625	6.375	None	171686	B2	15.500	12.125	20.375	8.250	None
72179	B11	12.375	13.500	20.000	6.500	None	171771	B5	14.000	10.250	16.875	6.625	P590
72180	B11	12.375	13.500	20.000	6.500	None	171780	B4	14.625	14.750	21.125	6.375	P590
72185	B14	13.500	13.375	19.875	6.500	P762	171781	B4	15.875	15.875	24.250	8.375	P590
72186	B14	13.500	13.375	19.875	6.500	P762	171797	B5	14.375	11.500	18.500	7.000	P853
72191	B11	13.375	14.000	20.375	6.375	P762	171798	B15	16.625	13.750	21.000	7.250	P853
72192	B11	13.375	14.000	20.375	6.375	P762	171799	B5	16.625	13.750	21.000	7.250	P853
72193	B11	14.250	14.875	22.250	7.500	P762	171809	B13	14.250	11.000	17.750	6.750	P588
72194	B11	14.375	14.875	22.375	7.500	P762	171810	B13	14.250	11.000	17.750	6.750	P588
72199	B11	12.625	13.750	20.500	6.750	None	171819L	B5	13.625	10.875	17.250	6.375	P588

† Bumper Stop Unit. Dimension shown at Bumper Contact.

‡ Hydraulic Lockout Unit. Dimension shown at Lockout Contact.

MOUNTING & LENGTH CHARTS—STRUTS

PART NO.	STRUT BODY		LENGTHS			PARTS PACK	PART NO.	STRUT BODY		LENGTHS			PARTS PACK
	Type	Length	Comp.	Ext.	Trav.			Type	Length	Comp.	Ext.	Trav.	
QUICK-STRUT® — Continued							MONRO-MATIC PLUS® STRUT — Continued						
171819R	B5	13.625	10.875	17.250	6.375	P588	801296	SS2	14.250	14.500	21.250	6.750	111900003
171820	B5	13.875	10.250	16.750	6.500	P590	801311	SS4	12.625	13.375	20.375	7.000	None
171822	B5	14.500	11.500	18.500	7.000	P853	801351	SS2	13.250	13.500	20.000	6.500	P1167
171831	B7	13.250	10.500	18.500	8.000	P1394	801352	SS3	13.375	13.625	18.250	4.625	P1167
171833	B5	15.000	12.375	18.750	6.375	P588	801504	B4	14.750	15.125	21.375	6.250	17110533
171845L	SPEC	17.500	16.375	20.500	4.125	P858	801505	B4	14.750	15.125	21.375	6.250	17110533
171845R	SPEC	17.500	16.375	20.500	4.125	P858	801525	B4	14.500	15.250	22.000	6.750	17110658
171855L	B5	13.500	10.875	17.250	6.375	P588	801565	B3	9.500	10.000	13.375	3.375	P1095
171855R	B5	13.500	10.875	17.250	6.375	P588	801570	B10	14.875	16.625	23.375	6.750	P762
171875	B3	12.125	13.500	17.750	4.250	P906	801571	B10	14.875	16.625	23.375	6.750	P762
171878	B2	12.500	11.875	18.375	6.500	P858	801572	B5	15.500	11.500	18.500	7.000	P590
171880	B2	14.375	14.500	22.750	8.250	P858	801615	B4	14.750	14.875	19.000†	4.125	P590
171900	B11	13.750	14.250	20.250	6.000	P839	801616	B4	15.875	16.000	21.875†	5.875	P590
171901	B11	13.750	14.250	20.250	6.000	P839	801617	B13	13.875	11.375	17.625†	6.250	P588
171920	B4	14.625	14.750	21.125	6.375	P590	801618	B13	13.875	11.375	17.625†	6.250	P588
171921	B13	13.875	11.375	17.500	6.125	P588	801619	B9	18.000	18.250	26.375†	8.125	P762
171922	B13	13.875	11.375	17.500	6.125	P588	801620	B9	18.000	18.250	26.375†	8.125	P762
171933	B9	12.500	13.875	20.500	6.625	None	801628	B10	12.250	12.250	18.000†	5.750	P808
171945	B4	9.600	10.100	15.350	5.250	None	801629	B10	12.250	12.250	18.000†	5.750	P808
171946	B4	9.600	10.100	15.350	5.250	None	801632	B5	14.500	11.500	18.500†	7.000	P853
171951	B9	14.125	13.750	19.375	5.625	None	801660	B10	14.875	14.500	22.375†	7.875	P808
171952	B2	13.625	13.250	18.750	5.500	P808	801661	B5	13.750	10.250	16.625†	6.375	P588
171953	B9	15.750	16.000	23.250	7.250	P1173	801662	B2	16.625	15.500	23.125†	7.625	P588
171954	B2	15.125	15.500	22.500	7.000	P808	801663	B2	16.625	15.500	23.125	7.625	None
171957	B2	16.500	17.000	24.250	7.250	P808	801672	B5	13.375	11.000	18.000	7.000	None
171958	B2	16.500	17.000	24.250	7.250	P808	801673	B19	15.500	10.250	21.250	11.000	None
171959	B5	12.500	10.125	15.500	5.375	P588	801678	B10	13.750	13.875	20.125	6.250	None
171960	B9	14.875	14.125	19.250	5.125	P588 P1330	801679	B10	13.750	13.875	20.125	6.250	None
171964L	B5	15.625	13.250	19.500	6.250	P588	801680	B1	16.500	17.000	24.250	7.250	P808
171964R	B5	15.625	13.250	19.500	6.250	P588	801681	B10	16.500	17.000	24.250	7.250	P808
171973	B5	13.875	11.375	17.750	6.375	P588	801682	B10	13.625	15.375	21.625	6.250	P762
171979	B11	13.750	13.875	20.125	6.250	P808	801683	B10	13.625	14.375	21.625	7.250	P762
171980	B11	13.750	13.875	20.125	6.250	P808	801686	B2	15.500	12.125	20.375	8.250	None
171989	B4	10.590	10.810	15.940	5.130	None	801687	B4	14.000	14.000	20.250	6.250	P1085
171992	B2	12.500	12.000	18.500	6.500	None	801691	B3	13.625	16.625	19.500	2.875	17110252
171994	B2	14.375	14.625	22.750	8.125	P858	801698	B3	13.250	13.750	18.375	4.625	17110417
172174	B13	13.750	11.350	17.710	6.370	P1124	801708	B5	13.750	10.250	16.875†	6.625	P590
MONRO-MATIC PLUS® STRUT							801715	B9	14.125	14.000	20.625†	6.625	P588
801202	SS1	12.500	13.250	21.500†	8.250	P1006	801716	B1	16.125	14.000	19.500†	5.500	P589
801205	SS1	11.750	13.125	20.375†	7.250	P942	801718	B6	14.125	14.250	21.750†	7.500	P858
801209	SS2	14.375	17.000†	21.250†	4.250	None	801728	B1	13.875	12.500	19.125†	6.625	None
801218	SS3	12.250	15.625†	19.125†	3.500	P854	801737	B5	14.125	11.625	17.625†	6.000	P588
801221	SS1	14.375	15.000	23.375†	8.375	P840	801738	B5	15.625	13.375	19.125†	5.750	P588
801225	SS2	15.125	15.625	23.375†	7.750	P255	801751	B10	15.750	16.250	24.250†	8.000	P858
801227	SS4	15.375	15.500	22.125†	6.625	P878	801756	B1	15.875	13.500	20.625†	7.125	P869
801230	SS1	13.000	13.125	21.375†	8.250	P919	801757	B3	13.000	12.125	18.375	6.250	P839
801231	SS4	13.125	13.250	19.375†	6.125	P905	801758	B4	14.375	14.250	19.625	5.375	P766
801234	SS2	16.750	17.000	24.250†	7.250	P866	801759	B4	14.375	15.125	21.000†	5.875	P858
801241	SS4	15.750	16.000	24.125†	8.125	P905	801760	B11	14.500	15.375	22.500†	7.125	None
801242	SS2	12.000	12.375	19.375	7.000	P866	801761	B2	13.250	13.500	20.250†	6.750	P928
801256	SS1	12.000	12.250	19.000†	6.750	P762	801762	B2	14.500	14.875	22.250†	7.375	None
801260	SS5	11.625	14.750	20.500	5.750	P878	801767	B9	13.625	13.875	20.000†	6.125	P588
801265	SS1	16.125	16.500	25.000†	8.500	P1006	801770	B5	14.125	11.625	17.625†	6.000	P588
801266	SS5	13.125	13.250	19.375†	6.125	P878	801771	B5	14.000	10.250	16.875†	6.625	P590
801278	SS2	11.000	11.125	16.625	5.500	None	801772	B11	14.750	15.000	22.625†	7.625	None
801281	SS2	17.125	17.375	23.750†	6.375	None	801773	B11	14.750	15.000	22.625†	7.625	None
801282	SS4	12.750	13.500	20.750†	7.250	None	801775	B2	13.875	13.375	19.500	6.125	None
801286	SS4	16.125	16.250	24.250	8.000	P866	801776	B2	13.875	13.375	19.500	6.125	None
801290	SS1	14.375	15.125	18.750†	3.625	None	801779	B4	14.375	15.125	21.000†	5.875	P858
801291	SPEC	12.000	10.000	15.375	5.375	17110252	801780	B4	14.625	14.750	21.125†	6.375	P590
801292	SPEC	13.500	13.250	19.250	6.000	17110276	801781	B4	15.875	15.875	24.250†	8.375	P590
801293	SPEC	13.750	12.375	17.750	5.375	17110273	801792	B11	12.750	13.000	19.250†	6.250	P839

† Bumper Stop Unit. Dimension shown at Bumper Contact.

‡ Hydraulic Lockout Unit. Dimension shown at Lockout Contact.

Product Specifications Subject to Change Without Notice.

SHOCKS

LOAD ADJUSTING SHOCKS

AIR SHOCKS

CARTRIDGES

STRUTS

LIFT SUPPORTS

MOUNTING & LENGTH CHARTS—STRUTS

PART NO.	STRUT BODY Type	Length	LENGTHS Comp.	Ext.	Trav.	PARTS PACK	PART NO.	STRUT BODY Type	Length	LENGTHS Comp.	Ext.	Trav.	PARTS PACK
MONRO-MATIC PLUS® STRUT — Continued							MONRO-MATIC PLUS® STRUT — Continued						
801795	B8	12.875	12.875	18.750†	5.875	P762	801922	B13	13.875	11.375	17.500†	6.125	P588
801797	B5	14.375	11.500	18.500†	7.000	P853	801924	B17	13.000	10.250	17.000†	6.750	P590 P1328
801798	B15	16.625	13.750	21.000†	7.250	P853	801925	B17	15.125	12.625	19.625†	7.000	P590 P1328
801799	B5	16.625	13.750	21.000†	7.250	P853							P1329
801800	B5	14.000	10.875	17.750†	6.875	P853	801926	B13	14.625	11.500	17.375†	5.875	P588
801801	SPEC	14.750	15.000	22.500†	7.500	None	801927	B13	14.625	11.500	17.375†	5.875	P588
801803	B1	15.625	13.625	20.125†	6.500	P869	801932	B12	12.500	8.750	15.250†	6.500	P808
801806	B11	13.625	13.375	20.000†	6.625	None	801933	B10	13.500	13.875	20.500	6.625	P986
801807	B3	10.250	11.750†	14.000	2.250	P855	801936	B10	14.875	14.875	21.750†	6.875	P808
801809	B13	14.250	11.000	17.750†	6.750	P588	801937	B13	14.750	11.125	17.250†	6.125	P1030
801810	B13	14.250	11.000	17.750†	6.750	P588	801938	B13	14.750	11.125	17.250†	6.125	P1030
801815	B10	12.750	13.375	19.750†	6.375	P839	801939	B3	18.875	19.000	27.500†	8.500	P1031
801816	B10	15.250	14.000	22.875†	8.875	P839	801951	B2	13.625	13.250	18.750†	5.500	P808
801817	B10	15.250	14.000	22.875†	8.875	P839	801952	B2	13.625	13.250	18.750†	5.500	P808
801818	B2	13.000	12.625	18.625†	6.000	P839	801953	B2	15.125	15.500	22.500†	7.000	P808
801819	B5	13.625	10.875	17.250†	6.375	P588	801954	B2	16.125	15.500	22.500†	7.000	P808
801822	B5	14.500	11.500	18.500†	7.000	P853	801955	B2	13.500	15.250	19.250†	4.000	P808
801828	B1	15.250	13.625	20.125†	6.500	P918	801956	B2	13.500	15.250	19.250†	4.000	P808
801829	B3	11.000	11.125	15.250†	4.125	P906	801959	B5	12.500	10.125	15.500†	5.375	P588
801831	B1	14.625	10.500	18.500†	8.000	P853	801960	B9	14.875	14.125	19.250†	5.125	P588
801833	B5	15.000	12.375	18.750†	6.375	P588	801961	B15	16.625	13.750	21.000†	7.250	P1039
801837	B2	12.875	13.000	19.250†	6.250	P808 P928	801962	B7	16.000	12.875	18.500†	5.625	P589
801838	B2	15.500	15.375	22.375†	7.000	P808	801963	B7	16.000	12.875	18.500†	5.625	P589
801844	B3	12.000	12.125†	16.500†	4.375	P906	801964	B5	15.625	13.250	19.500†	6.250	P588
801845	SPEC	17.500	16.375	20.500†	4.125	P858	801968	B10	13.625	14.375	20.125†	5.750	P839
801846	B2	15.125	14.500	22.625†	8.125	P808	801969	B10	13.625	14.375	20.125†	5.750	P839
801847	B2	15.125	14.500	22.625†	8.125	P808	801972	B12	16.625	12.250	19.875†	7.625	P853
801851	B2	12.500	12.375	18.000†	5.625	P839	801973	B5	13.875	11.375	17.750†	6.375	P588
801852	B8	13.375	13.375	20.250†	6.875	P839	801979	B11	13.750	13.875	20.125†	6.250	P808
801853	B5	12.500	11.375	18.000†	6.625	P986	801980	B11	13.750	13.875	20.125†	6.250	P808
801854	B5	14.000	10.750	17.875†	7.125	P853	801983	B4	13.750	13.875	20.500†	6.625	P1086
801855	B5	13.500	10.875	17.250†	6.375	P588	801984	B4	15.875	16.875	26.125†	9.250	P1085
801857	B11	13.750	13.125	19.125†	6.000	P808	801989	B3	12.875	13.000	18.125	5.125	P906
801858	B11	13.750	13.125	19.125†	6.000	P808	801992	B2	12.500	12.000	18.500	6.500	None
801859	B11	13.750	13.375	19.625†	6.250	P808	801993	B2	12.875	11.750	17.250	5.500	None
801860	B11	13.750	13.375	19.625†	6.250	P808	801994	B2	14.375	14.625	22.750	8.125	P858
801861	B11	15.750	16.000	24.000†	8.000	P808	REFLEX™ TRUCK STRUTS						
801862	B11	15.750	16.000	24.000†	8.000	P808	931102	S5 LS40		11.000	15.000	4.000	P1365
801868	B5	13.625	10.375	16.250†	5.875	P838	931103	S5 LS40		11.000	15.000	4.000	P1365
801869	B2	12.625	12.500	18.875†	6.375	P839	931104	SS2	16.875	16.875	21.875	5.000	P1167
801871	B11	12.875	13.375	19.625†	6.250	P839	931105	SS2	11.500	12.500	16.500	4.000	P762
801872	B2	12.875	13.375	19.625†	6.250	P839	931106	SS2	11.500	12.500	16.500	4.000	P762
801873	B10	15.375	14.875	23.125†	8.250	P839	931109	SS2	15.000	15.125	20.250	5.125	None
801874	B10	15.375	14.875	23.125†	8.250	P839	931110	SS2	15.000	15.125	20.250	5.125	None
801875	B3	12.125	13.500	17.750†	4.250	P906	931321	SS3	18.250	18.250†	20.750†	2.500	P1365
801878	B2	12.500	11.875	18.375†	6.500	P858	931341	B3	11.000	11.750	16.000	4.250	None
801880	B2	14.375	14.500	22.750†	8.250	P858	931347	SS3	13.625	13.625	17.875†	4.250	P1167
801881	B11	12.125	13.000	18.875†	5.875	P839	931348	SS3	13.500	13.500	18.250	4.750	P1167
801882	B11	12.125	13.000	18.875†	5.875	P839	931351	SS3	13.500	13.500	17.875	4.375	P1167
801883	B5	13.000	11.250	18.000†	6.750	P986	931352	SS3	13.625	13.625	18.250	4.625	P1167
801885	B9	13.750	13.125	19.375†	6.250	P762	931353	SS3	13.625	13.625	18.250	4.625	P1167
801888	B9	13.125	12.250	18.875†	6.625	P838	931357	SS2	12.750	12.875	18.500	5.625	None
801889	B16	19.875	17.250	25.875†	8.625	P838	931358	SS3	11.000	11.000	14.875	3.875	None
801897	SPEC	12.375	12.750	16.375†	3.625	P1095	931361	SS2	17.375	17.375	21.625	4.250	None
801898	B11	13.000	12.625	18.750†	6.125	P808	931362	SS2	15.750	15.750	20.625	4.875	None
801899	B11	13.000	12.625	18.750†	6.125	P808	931369	SS2	16.125	16.125	19.750	3.625	None
801900	B11	13.750	14.250	20.250†	6.000	P839	931370	SS1	14.250	14.250	21.250	7.000	P1388
801901	B11	13.750	14.250	20.250†	6.000	P839	931371	SS3	16.875	16.875	22.000	5.125	P1167
801902	B18	12.875	10.250	16.375†	6.125	P839	931377	SS2	14.000	14.125	20.000	5.875	None
801918	B2	12.500	12.250	17.875†	5.625	P839	931398	SS2	18.375	18.375	19.125	0.750	P1365
801920	B4	14.625	14.750	21.125†	6.375	P590	931437	B2	15.375	15.125	21.750	6.625	None
801921	B13	13.875	11.375	17.500†	6.125	P588	931438	B2	15.375	15.125	21.750	6.625	None

† Bumper Stop Unit. Dimension shown at Bumper Contact.

‡ Hydraulic Lockout Unit. Dimension shown at Lockout Contact.

MOUNTING & LENGTH CHARTS—STRUTS

PART NO.	STRUT BODY		LENGTHS			PARTS PACK		PART NO.	STRUT BODY		LENGTHS			PARTS PACK	
	Type	Length	Comp.	Ext.	Trav.				Type	Length	Comp.	Ext.	Trav.		
REFLEX™ TRUCK STRUTS — Continued								REFLEX™ TRUCK STRUTS — Continued							
931441	B10	15.750	16.000	22.625	6.625	P762		932101	B2	16.125	15.875	20.250	4.375	None	
931442	B11	15.750	16.000	22.625	6.625	P762		932103	B2	18.125	17.875	25.000	8.125	None	
931451	B17	17.000	14.500	21.625	7.125	P1450		932104	B2	18.125	17.875	25.000	8.125	None	
931452	B17	17.000	14.500	21.625	7.125	P762		932122	B2	13.250	13.375	20.125	6.750	P590	
931479	B13	14.250	14.375	20.500	6.125	BE17110542		932130	B9	14.500	14.375	21.500	7.125	P1450	
931480	B13	14.250	14.375	20.625	6.250	BE17110542		932135	B9	14.500	14.375	21.500	7.125	P1450	
931481	B13	15.875	16.000	23.625	7.625	BE17110542		932136	B9	14.625	14.375	21.500	7.125	P1450	
931482	B13	15.875	16.000	23.625	7.625	BE17110542		932143	B9	14.500	14.500	21.000	6.500	P1450	
931494	B2	16.375	15.875	21.250	5.375	None		932144	B9	13.375	14.500	21.125	6.625	P1450	
931495	B2	16.375	15.875	21.250	5.375	None		932211	B10	16.625	17.625	24.625	7.000	P1418	
931496	B2	17.000	16.750	24.375	7.625	None		932212	B10	16.625	17.625	24.625	7.000	P1418	
931497	B2	17.000	16.750	24.375	7.625	None		932213	B9	17.625	18.000	25.250	7.250	P808	
931498	B11	14.500	15.125	23.125	8.000	None		932214	B9	17.625	18.000	25.250	7.250	P808	
931499	B11	14.500	15.000	23.125	8.125	None		932215	B9	15.625	16.000	23.750	7.750	P808	
931570	B10	15.000	16.750	23.375†	6.625	P762		932216	B9	15.625	16.000	23.750	7.750	P808	
931571	B10	15.000	16.750	23.375†	6.625	P1167		932217	B10	14.750	12.500	20.625	8.125	P1460	
931572	B5	15.500	12.125	18.500†	6.375	P590		932218	B10	14.750	12.500	20.625	8.125	P1460	
931573	B10	15.000	16.000	22.625†	6.625	P762		932219	B11	15.125	15.750	22.125	6.375	P762	
931574	B10	15.000	16.000	22.625†	6.625	P762		932220	B11	15.125	15.750	22.125	6.375	P762	
931577	B3	9.375	9.750	13.875†	4.125	None		932221	B11	15.875	16.500	24.125	6.625	P762	
931597	B11	14.250	14.500	21.000	6.500	P1450		932222	B11	15.875	16.500	24.125	6.625	P762	
931598	B9	14.250	14.500	21.000	6.500	P762		932225	B11	15.125	15.750	22.125	6.500	None	
931661	B5	13.750	10.250	16.625	6.375	P588		932226	B11	15.125	15.750	22.125	6.500	None	
931833	B5	15.000	12.375	18.750†	6.375	P588		932227	B11	15.875	16.500	24.125	7.625	None	
931920	B4	14.625	14.750	21.125†	6.375	P590		932228	B11	15.875	16.500	24.125	7.625	None	
931964	B5	15.625	13.250	19.500†	6.250	P588		941001	SS1	12.805	14.513	18.060	3.547	None	

† Bumper Stop Unit. Dimension shown at Bumper Contact.

‡ Hydraulic Lockout Unit. Dimension shown at Lockout Contact.

Product Specifications Subject to Change Without Notice.

SHOCKS

LOAD ADJUSTING SHOCKS

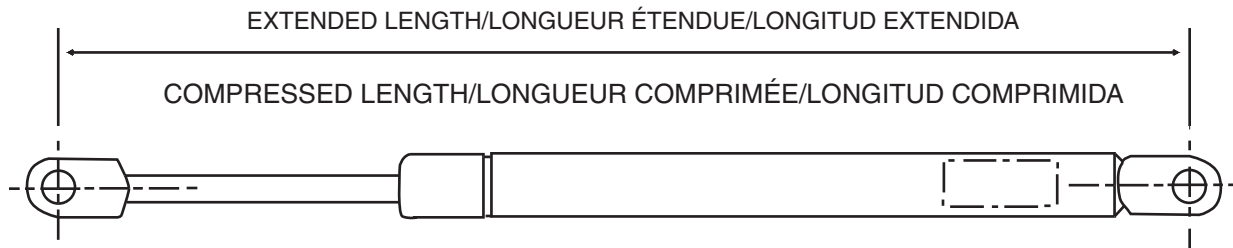
AIR SHOCKS

CARTRIDGES

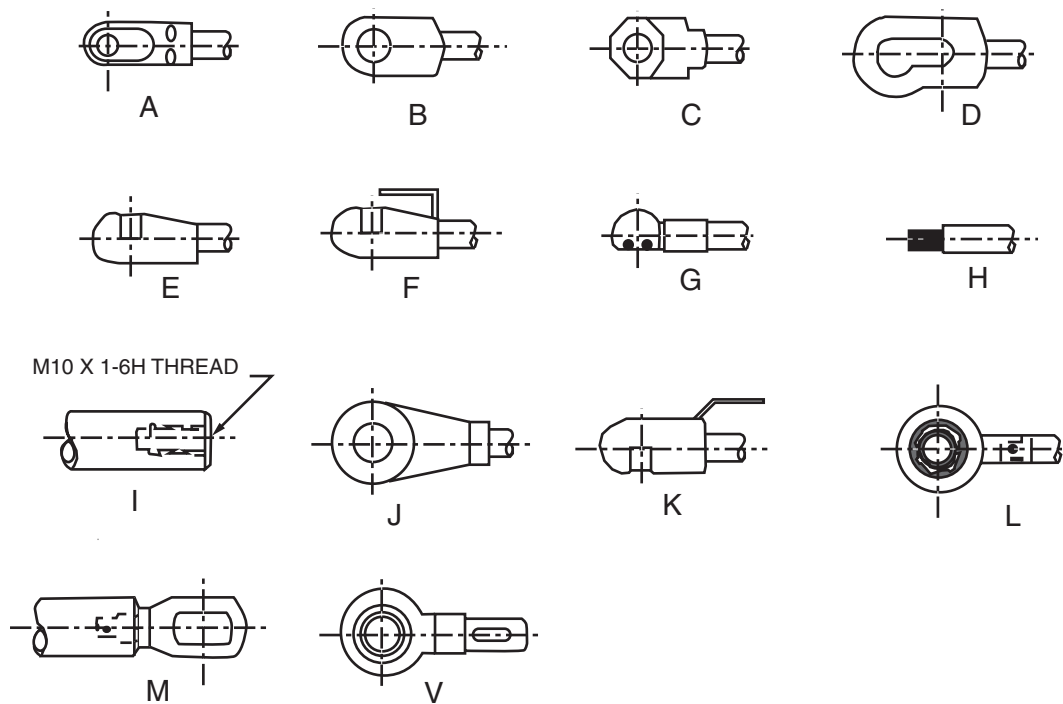
STRUTS

LIFT SUPPORTS

MAX-LIFT™
LENGTH DIMENSIONING
DIMENSIONS DE LA LONGUEUR
MEDIDAS DE LONGITUD



END MOUNTING CODES
CODES DE MONTAGE
CÓDIGOS DE MONTAJE



MOUNTING & LENGTH CHARTS—LIFT SUPPORTS

PART NO.	MOUNTING		LENGTHS			PARTS PACK	PART NO.	MOUNTING		LENGTHS			PARTS PACK
	Upper	Lower	Comp.	Ext.	Trav.			Upper	Lower	Comp.	Ext.	Trav.	
MAX-LIFT™ GAS-CHARGED LIFT SUPPORTS							MAX-LIFT™ GAS-CHARGED LIFT SUPPORTS — Continued						
901002	C	C	16.500	28.125	11.625	None	901229	B	H	11.000	18.750	7.750	None
901007	E	E	19.500	28.750	9.250	8095648	901230	E	B	12.500	19.000	6.500	8095637
901015	E	E	21.000	33.250	12.250	8095630	901231	E	E	12.000	19.000	7.000	None
901016	F	F	22.250	33.500	11.250	None	901235	G	E	12.375	19.375	7.000	None
901019	M	L	29.250	39.125	9.875	None	901240	E	E	11.625	19.625	8.00	None
901020	M	L	29.250	39.125	9.875	None	901241	E	E	14.250	19.625	5.375	None
901021	M	L	29.250	39.125	9.875	None	901242	B	B	11.625	19.625	8.000	None
901032	L	E	23.125	29.875	6.750	None	901244	E	E	11.375	19.625	8.250	None
901034	L	E	23.125	29.875	6.750	None	901246	B	B	12.000	19.750	7.750	None
901036	E	E	18.875	33.375	14.500	None	901247	F	F	11.750	19.750	8.000	None
901037			19.625	31.875	12.375	None	901252	E	E	13.750	21.250	7.500	8095630
901038			19.000	31.875	12.250	8031312	901254	F	F	14.000	19.500	5.500	None
901043	E	E	19.000	26.625	7.625	8096502	901255	E	E	11.875	19.750	7.875	None
901045	E	E	20.875	36.125	15.250	None	901256	E	J	14.500	20.500	6.000	None
901101	E	E	15.375	22.250	6.875	None	901257	C	C	16.000	19.375	3.375	None
901102	E	E	15.875	22.250	6.375	8095644	901260	G	E	12.375	19.750	7.375	8095664
901109	E	E	14.250	23.500	9.250	8095619	901266	E	E	16.625	25.000	8.375	None
901112	E	E	17.250	23.500	6.250	8095623	901268	E	E	11.000	15.250	4.250	None
901113	B	B	14.250	23.625	9.375	None	901269	E	E	11.000	17.250	6.250	None
901114	G	G	16.000	23.750	7.750	8095209	901270	E	E	11.625	19.625	8.000	None
901120	E	E	14.750	24.250	9.500	None	901271	E	E	11.625	19.625	8.000	None
901121	F	F	14.125	24.250	10.125	None	901272	E	E	11.625	19.625	8.000	None
901122	E	E	17.000	24.375	7.375	None	901274	E	E	11.750	18.250	6.500	8095627
901124	E	E	15.875	24.375	8.500	8095105	901275	B	B	8.375	14.500	6.125	None
901126	B	B	15.000	24.500	9.500	None	901277	E	B	9.625	16.000	6.375	None
901129	E	E	16.250	25.000	8.750	8095627	901282	B	B	11.500	17.375	5.875	None
901135	E	E	17.000	25.875	8.875	8095646	901284	C	C	10.375	16.625	6.250	None
901136	E	E	17.375	26.250	8.875	8095631	901285	E	E	11.500	17.500	6.000	None
901145	C	C	15.375	23.875	8.500	None	901286	E	E	11.500	19.125	7.625	None
901149	E	E	16.625	25.000	8.375	None	901287	E	E	14.875	19.125	4.250	None
901150	E	E	17.250	26.625	9.375	None	901288	E	E	12.875	19.375	6.500	None
901152	E	J	14.500	25.375	10.875	8095673	901289	E	E	14.375	20.000	5.625	None
901159	E	E	12.875	21.500	8.625	None	901290	B	E	14.750	20.625	5.875	None
901160	B	B	13.125	21.500	8.375	None	901293	B	E	11.000	17.625	6.625	None
901162	C	E	16.500	20.375	3.875	None	901295	B	E	12.375	20.125	7.750	None
901163	E	E	15.125	20.500	5.375	None	901298	B	B	14.750	19.000	4.250	None
901164	E	E	14.750	22.375	7.625	None	901305	C	C	5.750	8.375	2.625	None
901165	E	E	14.375	22.625	8.250	None	901307	C	C	6.000	9.500	3.500	None
901166	E	E	13.375	22.875	9.500	None	901308	C	C	6.000	9.625	3.625	None
901167	E	E	14.125	24.000	9.875	None	901312	C	C	6.250	9.750	3.500	None
901169	E	E	14.500	25.375	10.875	None	901313	C	C	6.625	9.875	3.250	None
901171	E	B	14.500	25.000	10.500	None	901315	C	C	6.625	10.375	3.750	None
901172	E	B	13.500	23.000	9.500	None	901316	E	E	7.750	11.250	3.500	None
901175	E	E	15.500	20.875	5.375	None	901317	B	B	7.875	11.500	3.625	None
901176	E	E	12.625	20.875	8.250	None	901318	E	C	7.875	12.000	4.125	None
901177	E	E	15.250	23.875	8.625	None	901319	E	E	8.500	12.000	3.500	None
901178	E	B	10.500	16.750	6.250	None	901322	C	C	7.750	12.750	5.000	None
901201	C	C	10.125	15.250	5.125	None	901328	E	E	9.500	14.500	5.000	None
901202	C	C	9.500	15.375	5.875	None	901329	E	E	9.625	14.500	4.875	8095627
901203	B	B	9.500	15.375	5.875	None	901330	E	E	11.125	14.250	3.125	None
901205	E	E	10.750	15.750	5.000	8095647	901334	B	B	7.000	10.000	3.000	None
901206	E	E	10.125	16.000	5.875	8094647	901335	B	B	7.000	10.000	3.000	None
901208	B	B	10.250	16.625	6.375	None	901336	B	B	7.000	10.000	3.000	None
901209	B	B	10.875	16.625	5.750	None	901339	B	B	6.300	10.000	3.700	None
901211	V	B	11.250	16.750	5.500	None	901340	E	E	7.875	9.875	2.000	None
901217	B	B	11.000	17.125	6.125	None	901341	E	E	8.750	11.750	3.000	None
901218	E	E	11.000	17.250	6.250	None	901342	E	E	8.750	11.750	3.000	None
901221	E	E	10.750	17.500	6.750	8095627	901343	E	E	9.875	11.750	1.875	None
901224	J	E	11.750	18.000	6.250	None	901345	E	E	9.000	13.125	4.125	None
901226	E	E	11.375	18.125	6.750	None	901351	E	E	8.625	14.500	5.875	None
901227	F	F	11.500	18.125	6.625	None	901352	E	E	8.250	11.500	3.250	None

SHOCKS

LOAD ADJUSTING
SHOCKS

AIR SHOCKS

CARTRIDGES

STRUTS

LIFT SUPPORTS

MOUNTING & LENGTH CHARTS—LIFT SUPPORTS

PART NO.	MOUNTING		LENGTHS			PARTS PACK
	Upper	Lower	Comp.	Ext.	Trav.	
MAX-LIFT™ GAS-CHARGED LIFT SUPPORTS — Continued						
901353	B	B	8.500	12.000	3.500	None
901600	B	B	11.875	19.625	7.750	None
901601	E	E	9.000	13.875	4.875	None
901604	E	E	6.875	8.875	2.000	None

PART NO.	MOUNTING		LENGTHS			PARTS PACK
	Upper	Lower	Comp.	Ext.	Trav.	
MAX-LIFT™ GAS-CHARGED LIFT SUPPORTS — Continued						
901606	E	E	11.500	17.500	6.000	None
901610	E	E	11.500	18.625	7.125	None
901611	E	E	12.500	19.500	7.000	8295717
901612	E	E	10.875	16.250	5.375	8295724